

# Checklist of Ventura County Rare Plants<sup>1</sup>

By David L. Magney

California Native Plant Society, Channel Islands Chapter

Updated 3 October 2013

Ventura County is located in southern California, USA, along the east edge of the Pacific Ocean. The coastal portion occurs along the south and southwestern quarter of the County. Ventura County is bounded by Santa Barbara County on the west, Kern County on the north, Los Angeles County on the east, and the Pacific Ocean generally on the south (Figure 1, General Location Map of Ventura County).

Ventura County extends north to 34.9014°N latitude at the northwest corner of the County. The County extends westward at Rincon Creek to 119.47991°W longitude, and eastward to 118.63233°W longitude at the west end of the San Fernando Valley just north of Chatsworth Reservoir. The mainland portion of the County reaches southward to 34.04567°N latitude between Solromar and Sequit Point west of Malibu. When including Anacapa and San Nicolas Islands, the southernmost extent of the County occurs at 33.21°N latitude and the westernmost extent at 119.58°W longitude, on the south side and west sides of San Nicolas Island, respectively.

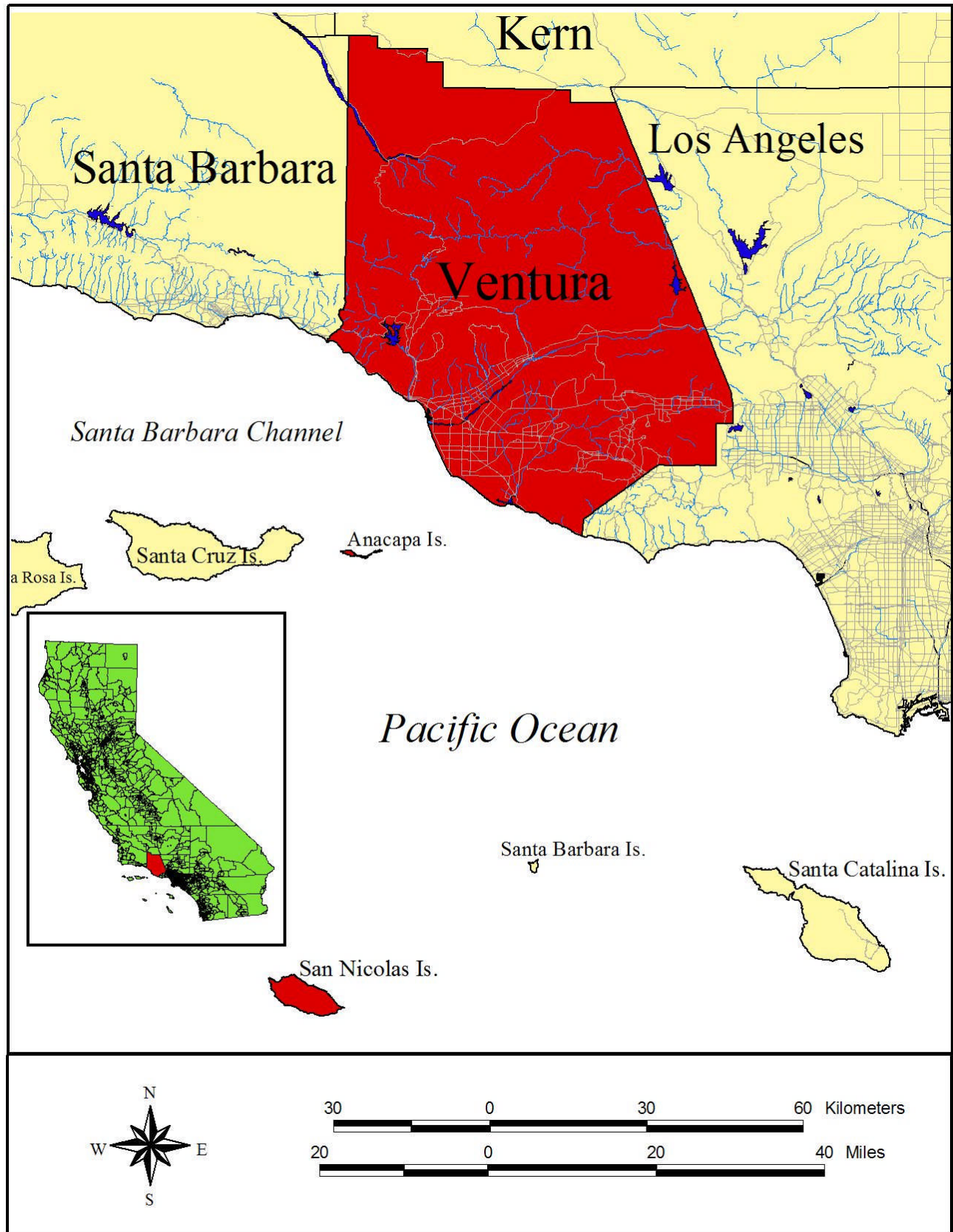
Ventura County occupies 480,996 hectares [ha] (1,188,562 acres [ac]) or 4,810 square kilometers [sq. km] (1,857 sq. miles [mi]), which includes Anacapa and San Nicolas Islands. The mainland portion of the county is 474,852 ha (1,173,380 ac), or 4,748 sq. km (1,833 sq. mi.) in area and ranges in elevation from sea level on the southwest to 2,692 meters [m] (8,831 feet [ft.]) above sea level at its northern border on Mount Piños (Figure 2, Shade Relief Map of Mainland Ventura County). There appears to be some discrepancy in the actual area covered by Ventura County, depending on the source. For example, according to the California County Fact Book, 1983 edition (California Supervisors Association of California 1983), Ventura County occupies an area of 482,668 ha (1,192,680 ac) or 2,999 sq. km (1,863.6 sq. mi), with 3,254 ha (8,040 ac) or 20.3 sq. km (12.6 sq. mi) of that as water. The discrepancy appears to be a little over 2,469 ha (6,100 ac), which does not correspond to the area occupied by the two islands within the County. However, the difference does appear to match the area occupied by a rectangular portion of the county in the northeast corner, where the Ventura County Board of Supervisors voted to give away approximately 6,100 acres to Kern County to accommodate a proposed development that Ventura County felt it could not provide adequate County services to.

Mainland Ventura County is located between 34°00' and 35°00'N latitude and 118°38' and 119°28'W longitude, excluding Anacapa and San Nicolas Islands, and is generally longer than wide. Anacapa Islands are the smallest and easternmost of the northern Channel Islands while San Nicolas Island is an outer southern Channel Island.

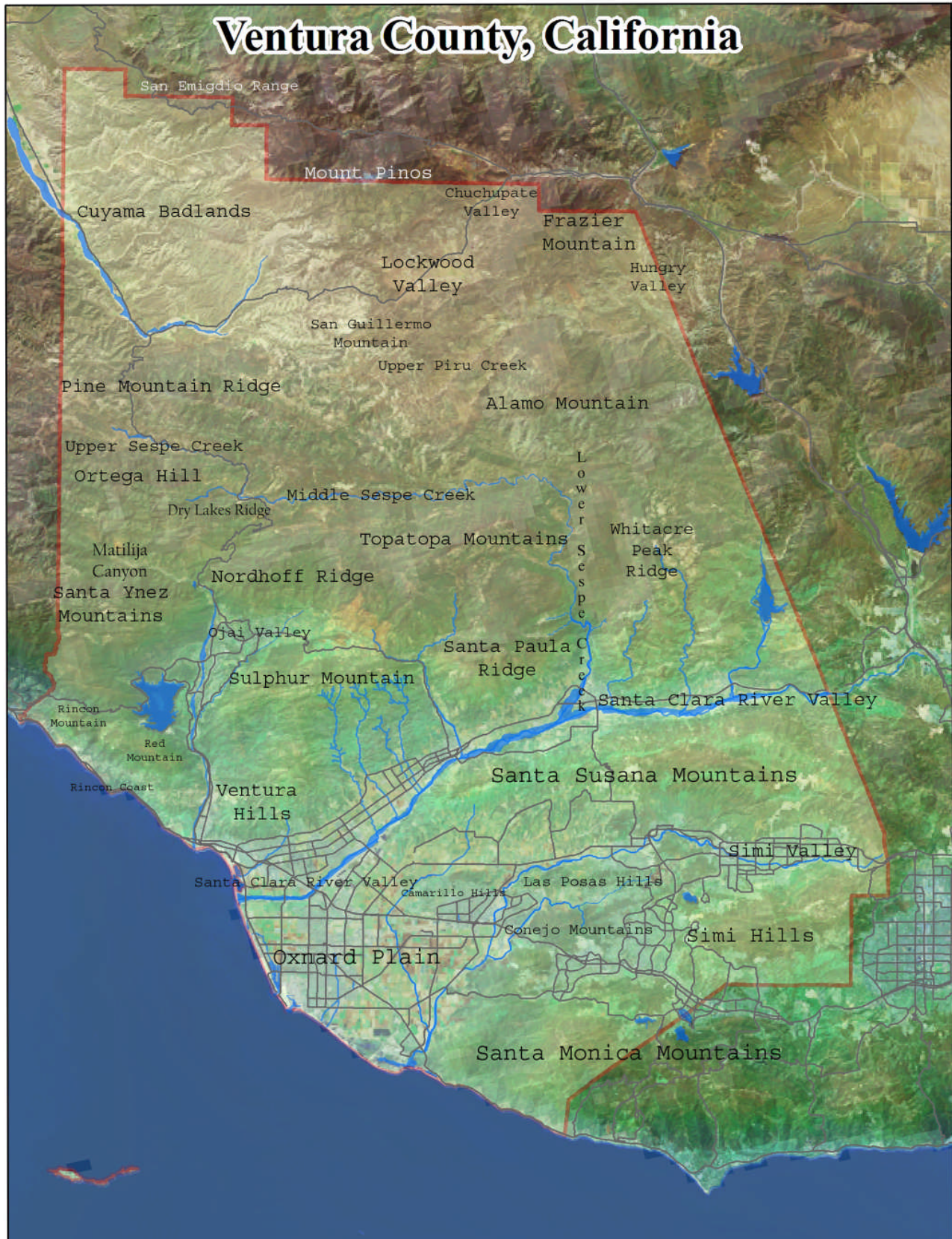
---

<sup>1</sup> This document should be cited as: Magney, D.L. 2013. Checklist of Ventura County Rare Plants. 3 October 2013, Twentieth Edition. California Native Plant Society, Channel Islands Chapter, Ojai, California. (Previous published update dated 20 June 2011.)

**Figure 1. General Location Map of Ventura County**



**Figure 2. Shade Relief Map of Mainland Ventura County**



The flora of Ventura County is comprised of approximately **2,695** native and naturalized vascular plant taxa, including those expected to occur but for which no vouchers are known (200 taxa) (Magney 2013<sup>2</sup>). A total of 2,373 taxa (88.1%) are known to occur in the county, which are supported by voucher specimens, with another 61 that have been observed by the author or reported by others, representing 90.3% of the county flora. Approximately 1,832 taxa (75.3%) of the flora are native, and another 602 (24.7%) taxa are not native (based on a flora of 2,434 taxa). A small percentage (9.6%) of the flora taxa (233 taxa) are quite common (dominant or common), on a scale ranging from dominant to rare (common, occasional, scattered, uncommon, and rare). Many more of the plant taxa in Ventura County are uncommon to quite rare.

All the species (including varieties and subspecies, which are lower taxonomic units than full species) of native and naturalized plants are important components of the biodiversity of life in Ventura County. While most species do not recognize political boundaries, such as county boundaries, our government agencies set policies and manage land use and resources based on such jurisdictional boundaries.

This list represents a compilation of known records and observations (many by the author) of all native vascular plant species:

- With ten (10) or fewer populations within Ventura County;
- Listed by the California Native Plant Society (CNPS) on a statewide basis (CNPS 2001<sup>3</sup>, 2013<sup>4</sup>);
- Listed by the US Fish and Wildlife Service as Threatened or Endangered under the federal Endangered Species Act;
- Listed by the California Fish and Game Commission as Rare, Threatened, or Endangered;
- Are at the limits of their distribution range (southernmost, northernmost, westernmost extent); or
- The Type Locality occurs within the County (then only the Type Locality is considered sensitive).

Some taxa are considered rare or uncommon throughout California, as established by CNPS in its *Inventory of Rare and Endangered Plants of California*, sixth edition (CNPS 2001), even though more than ten populations are known from Ventura County, including Anacapa Islands and San Nicolas Island. Such taxa known to occur within Ventura County are included, but lack an “R” or “U” designation if there are more than the 5 or 10 populations, respectively. Currently there are **1,262**<sup>5</sup> taxa (51.8% of the known county flora) included on this list of locally rare plants of Ventura County (including taxa that are rare statewide), present on the mainland and the two islands (Anacapa and San Nicolas). Another 154 (5.7% of the expected flora of 2,695 taxa) were appended that are likely to occur in the County but for which no voucher specimens or reliable locality data are available. These are included at the end of this list. Many of these potential additions are known to occur in adjacent counties and expected to occur in Ventura County. A total of 63 plants (2.6%) considered rare in Ventura County occur only on the Channel Islands (Anacapa and San Nicolas Islands) portion of the county. A number of taxa were deleted from this list when over ten occurrences were known to occur in Ventura County.

---

<sup>2</sup> Magney, David L. 2013. Checklist of Vascular Plants of Ventura County, California. David Magney Environmental Consulting, Ojai, California, published on [www.venturaflora.com](http://www.venturaflora.com). Based on Magney's *A Flora of Ventura County: Annotated Catalogue of Vascular Plants*. Unpublished manuscript of 3 October 2013. David Magney Environmental Consulting, Ojai, California.

<sup>3</sup> California Native Plant Society. 2001. *Inventory of Rare and Endangered Plants of California*. Sixth edition. (Special Publication No. 1.) Rare Plant Scientific Advisory Committee, David Tibor, Convening Editor, Sacramento, California. September.

<sup>4</sup> California Native Plant Society. 2013. *Inventory of Rare and Endangered Plants of California*. (Online edition, v8-02.) 3 October 2013. Rare Plant Program, Sacramento, California.

<sup>5</sup> This number is sixty-nine (69) less taxa than included on the previous edition of this list.

This list was compiled as the results of extensive research of the flora of Ventura County. It is based on extensive field searches; examination of specimens collected by others housed at public herbaria; and published reports. The author began research on the Ventura County flora in the late 1970s.

To be published in the future separately, *Ventura County Rare Plants* will provide much more information about those plants included in this checklist, including: a brief description of the plant, habitat preferences, associated plant communities, elevation range, and blooming period. That publication will include additional information for each taxon, including complete scientific name, known synonyms, common name(s), habit and size, rarity status, months it is in bloom or identifiable, and general and specific locality data, with supporting voucher collection information. Each specimen cited for a specific location includes the name of the collector, the collection number (or collection date if no number was assigned), and the herbarium in which it is stored (some duplicate specimens have been deposited in more than one herbarium). Location information is provided at two levels: a general geographic area, and then specific locations.

This list should be considered the best available information at the time of publication, as our knowledge of the Ventura County flora is dynamic, and growing with each botanical survey or foray. This checklist will be updated periodically and revised according to all new verifiable information provided. Occurrences of vascular plants found in Ventura County that add to or could change the status of any plant listed here should be submitted to the author via CNPS (attention: David Magney) or via email to [david\(at\)magney\(dot\)org](mailto:david(at)magney(dot)org). Any lists submitted must be supported by voucher specimens that are deposited in a public herbarium, according to CNPS and California Botanical Society policies based on Ferren et al. (1995<sup>6</sup>).

Plants not included in CNPS's *Inventory*, or listed by federal and state agencies, that have more than ten populations in Ventura County will be dropped from this list, except for those plants:

- representing range limits, such as the westernmost limit of the taxons range; or
- the "Type Locality" sites ("Type Locality" sites are the sites from which the plant was originally collected and formally described from, and is represented by a "Type Specimen", for which a note occurs after the herbarium at which it is deposited as "Holotype" or "Isotype").

For those plants that are otherwise relatively common in Ventura County, only the populations that represent the limit of a plants range should be considered of concern (as sensitive), with the remaining population(s) noted to provide perspective, but not considered sensitive/rare for the purposes of this checklist. *Artemisia tridentata* var. *tridentata* is an example of this, where it should be considered of local concern when it occurs in the western portion of the Santa Clara River Valley (the limit of its range) while the populations in the Upper Sespe Creek watershed and the northern part of the county are not of concern from a rarity perspective.

Special-status species are plants that are either listed as endangered or threatened under the Federal or California Endangered Special Acts; or considered to be rare under the California Native Plant Protection Act; or considered to be rare (but not formally listed) by resource agencies, professional organizations (e.g. California Native Plant Society), and the scientific community. For the purposes of this checklist, special-status species are further defined in Table 1, Definitions of Special-Status Plant Species.

Listed species are those taxa that are formally listed as endangered or threatened by the federal government (e.g. U.S. Fish and Wildlife Service [USFWS]) pursuant to the national Endangered

---

<sup>6</sup> Ferren, W.R., Jr., D.L. Magney, and T.A. Sholars. 1995. The Future of California Floristics and Systematics: Collecting Guidelines and Documentation Techniques. *Madroño* 42(2):197-210.

Species Act or as endangered, threatened, or rare (for plants only) by the State of California (i.e. California Fish and Game Commission) pursuant to the California Endangered Species Act or the California Native Plant Protection Act.

The CNDDDB Element Ranking system provides a numeric global and state ranking system for all special-status plant and wildlife species and rare habitats tracked by the CNDDDB. The global rank (G-rank) is a reflection of the overall condition of an element (species or natural community) throughout its global range. The state ranking (S-rank) is assigned much the same way as the global rank, except state ranks in California often also contain a threat designation attached to the S-rank. This Element Ranking system is defined below in Table 2, Natural Diversity Data Base Element Ranking System. Not all special-status species considered in this checklist are tracked by the CNDDDB, nor have global or state rarity ranking been given to them; therefore, the author has applied the rules described above to “rank” those special-status species lacking such ranking. Taxa for which Global and State rarity ranking have been devised here are followed by a “?” in parentheses, denoting tentative assignment.

**Table 1. Definitions of Special-Status Plant Species**

<ol style="list-style-type: none"> <li>1. Plants legally protected under the California and Federal Endangered Species Acts or under other regulations.</li> <li>2. Plants considered sufficiently rare by the scientific community to qualify for such listing; or</li> <li>3. Plants considered to be sensitive because they are unique, declining regionally or locally, or are at the extent of their natural range.</li> </ol>
<b>Special-Status Plant Species</b>
<ul style="list-style-type: none"> <li>◆ Plants listed or proposed for listing as threatened or endangered under the Federal Endangered Species Act (50 CFR 17.12 for listed plants and various notices in the Federal Register for proposed species).</li> <li>◆ Plants that are Category 1 or 2 (species of special concern) candidates for possible future listing as threatened or endangered under the Federal Endangered Species Act (55 CFR 6184, February 21, 1990).</li> <li>◆ Plants that meet the definitions of rare or endangered species under the CEQA (<i>State CEQA Guidelines</i>, Section 15380).</li> <li>◆ Plants considered by the CNPS to be "rare, threatened, or endangered" in California (Lists 1A, 1B, and 2 in CNPS [2001]<sup>7</sup>).</li> <li>◆ Plants listed by CNPS as plants about which we need more information and plants of limited distribution (Lists 3 and 4 in CNPS [2001]).</li> <li>◆ Plants listed or proposed for listing by the State of California as threatened or endangered under the California Endangered Species Act (14 CCR 670.5).</li> <li>◆ Plants listed under the California Native Plant Protection Act (California Fish and Game Code 1900 <i>et seq.</i>).</li> <li>◆ Plants considered sensitive by other federal agencies (i.e. U.S. Forest Service, Bureau of Land Management) or state and local agencies or jurisdictions.</li> <li>◆ Plants considered sensitive or unique by the scientific community or occurring at the limits of its natural range (<i>State CEQA Guidelines</i>, Appendix G).</li> </ul>

CNPS’s *Inventory of Rare and Endangered Plants of California*<sup>8</sup> categorizes rare California plants into one of five lists (1A, 1B, 2, 3, & 4) representing the five levels of species status, one of which is assigned to a sensitive species to indicate its status of rarity or endangerment and distribution. A CNPS List is a more general designation than the three separate sets of information provided in a CNPS R-E-D Code (see the CNPS *Inventory* for definitions). However, the CNPS List is a significant designation in terms of a species’ overall status throughout all of California, and it works well in conjunction to the specifications of the R-E-D Code. The CNPS R-E-D Code is a three-numbered numeric ranking, which

<sup>7</sup> California Native Plant Society. 2001. *Inventory of Rare and Endangered Plants of California*. Sixth Edition. Sacramento, California. September.

<sup>8</sup> *Ibid.*

is assigned to a special-status species, consisting of one number (1, 2, or 3) for each of the three categories (Rarity-Endangerment-Distribution). Each number accurately describes the species' population levels and distribution patterns within each category.

As described for the NDDDB ranking, not all special-status species (most) considered in this checklist are tracked by CNPS, nor have R-E-D codes been given to them; however, the author has applied the rules described above to "rank" those special-status species lacking such ranking to either "rare" or "uncommon"; however, these rankings are not included in the checklist. Rather the occurrence rankings for each are provided in the *Ventura County Rare Plants* and in the *Flora of Ventura County* to be published in 2006 by the author.

The large number of taxa on this list is the result of several factors:

1. Development in Ventura County has eliminated a majority of the natural vegetation in the southern half of the County, eliminating many occurrences of native plant species;
2. A number of taxa found nowhere else are present in Ventura County, local endemics, and several of these are listed as threatened or endangered by either the California Department of Fish and Game or the U.S. Fish and Wildlife Service;
3. Ventura County is geographically situated such that floral influences from the north, south, and east enter the County at its edges (limits of some species' ranges);
4. Anacapa and San Nicolas Islands support many species found only on the California Channel Islands, including island endemics;
5. Ventura County is topographically and climatically diverse, providing numerous habitats for uncommon and rare species; and
6. Botanical surveys have not been conducted systematically everywhere in the County. In other words, the flora of Ventura County is not fully understood or documented, and additional populations of a number of the plants listed below likely occur in the County, we just aren't aware of them yet. Regardless, significant collecting has occurred in the County over the last 150 years, and the author has a reasonably good understanding of the flora.

This list was compiled according to definitions under the California Environmental Quality Act (CEQA) under Initial Study Checklist Section 6, Subsections A and E. Projects reviewed under CEQA should consider impacts to one or more of the species included in this checklist as potentially significant. Generally, if a project would impact a population of one or more of the plants listed herein, that/those impact(s) should be considered significant unless substantial evidence is provided that may support an alternate conclusion.

### ***What significance does a list of locally rare species have under CEQA?***

The following answer is provided by John Buse, Esq., of the Environmental Defense Center of Ventura, California<sup>9</sup>. The CEQA Guidelines provide that a lead agency shall find that a project may have a significant effect on the environment if the project "... has the potential to ... reduce the number or restrict the range of an endangered, rare or threatened species ...". Guidelines §15065(a). In addition, the CEQA Guidelines Appendix G Environmental Checklist Form considers whether a project would "have a substantial adverse effect, either directly or through habitat modifications, on any species identified as a candidate, sensitive, or special status species in local or regional plans, policies, or regulations ...".

---

<sup>9</sup> Buse, John, Esq., Environmental Defense Center, memorandum to David Magney of CNPS dated 14 September 2002.

**Table 2. Natural Diversity Database Element Ranking System**

<b>Global Ranking (G)</b>	
G1	Less than 6 viable element occurrences (populations for species) OR less than 1,000 individuals OR less than 809.4 hectares (ha) (2,000 acres [ac]).
G2	6 to 20 element occurrences OR 809.4 to 4,047 ha (2,000 to 10,000 ac).
G3	21 to 100 element occurrences OR 3,000 to 10,000 individuals OR 4,047 to 20,235 ha (10,000 to 50,000 ac).
G4	Apparently secure; this rank is clearly lower than G3 but factors exist to cause some concern (i.e. there is some threat, or somewhat narrow habitat).
G5	Population or stand demonstrably secure to ineradicable due to being commonly found in the world.
GH	All sites are <b>historic</b> ; the element has not been seen for at least 20 years, but suitable habitat still exists.
GX	All sites are <b>extirpated</b> ; this element is extinct in the wild.
GXC	Extinct in the wild; exists in cultivation.
G1Q	The element is very rare, but there is a taxonomic question associated with it.
<b>Subspecies Level</b>	
Subspecies receive a <b>T-rank</b> attached to the G-rank. With the subspecies, the G-rank reflects the condition of the entire <u>species</u> , whereas the T-rank reflects the global situation of just the <u>subspecies</u> or <u>variety</u> . For example: <i>Chorizanthe robusta</i> var. <i>hartwegii</i> . This plant is ranked G2T1. The G-rank refers to the whole species range (i.e. <i>Chorizanthe robusta</i> , whereas the T-rank refers only to the global condition of var. <i>hartwegii</i> ).	
<b>State Ranking (S)</b>	
S1	Less than 6 element occurrences OR less than 1,000 individuals OR less than 809.4 ha (2,000 ac). S1.1 = very threatened S1.2 = threatened S1.3 = no current threats known
S2	6 to 20 element occurrences OR 3,000 individuals OR 809.4 to 4,047 ha (2,000 to 10,000 ac). S2.1 = very threatened S2.2 = threatened S2.3 = no current threats known..
S3	21 to 100 element occurrences OR 3,000 to 10,000 individuals OR 4,047 to 20,235 ha (10,000 to 50,000 ac). S3.1 = very threatened S3.2 = threatened S3.3 = no current threats known
S4	Apparently secure within California; this rank is clearly lower than S3 but factors exist to cause some concern (i.e. there is some threat, or somewhat narrow habitat). NO THREAT RANK.
S5	Demonstrably secure to ineradicable in California. NO THREAT RANK.
SH	All California sites are <b>historic</b> ; the element has not been seen for at least 20 years, but suitable habitat still exists.
SX	All California sites are <b>extirpated</b> ; this element is extinct in the wild.

Notes: 1. Other considerations used when ranking a species or natural community include the pattern of distribution of the element on the landscape, fragmentation of the population/stands, and historical extent as compared to its modern range. It is important to take a bird's eye or aerial view when ranking sensitive elements rather than simply counting element occurrences.

2. Uncertainty about the rank of an element is expressed in two major ways: by expressing the rank as a range of values (e.g., S2S3 means the rank is somewhere between S2 and S3), and by adding a ? to the rank (e.g. S2?). This represents more certainty than S2S3, but less than S2. (CNDDDB 2002.)



According to the CEQA Guidelines, a species is considered “rare” when either:

- (A) Although not presently threatened with extinction, the species is existing in such small numbers throughout all or a significant portion of its range that it may become endangered if its environment worsens; or
- (B) The species is likely to become endangered within the foreseeable future throughout all or a significant portion of its range and may be considered “threatened” as that term is used in the Federal Endangered Species Act. Guidelines §15380(b)(2).

Species already listed under the California or federal ESA shall be presumed to be endangered, rare, or threatened. Guidelines §15380(c). A species not currently listed shall nevertheless be considered to be endangered, threatened, or rare if it meets the criteria in the CEQA definitions of “endangered” or “rare”. The term “sensitive” species, which appears in the Appendix G checklist, is not defined in CEQA.

If a species is considered locally rare due to its limited occurrence within a political boundary, such as the County of Ventura, and if the species’ local population constitutes a significant portion of its range, the species must be considered a rare species under CEQA. The mere placement of a species on a list of locally rare species is probably not enough to meet the CEQA criteria for endangered, threatened, or rare species. However, if the list contains some additional explanation indicating why the species meets the CEQA criteria, such as the fact that the local population constitutes a significant portion of the species’ range, the list should provide substantial evidence of rarity.

If the CEQA criteria are satisfied, it is irrelevant that a species is relatively common in other locations. For example, the Pacific Coast populations of the Snowy Plover are listed as threatened under the federal ESA, despite the fact that inland populations are relatively common and are not protected. The existence of the non-listed populations does not diminish the Snowy Plover’s status as a endangered, threatened, or rare species under CEQA. By extension, if the Pacific Coast populations of the Snowy Plover were not listed as threatened, these populations would still be considered endangered, threatened, or rare under CEQA. Accordingly, the special status for Snowy Plover in Ventura County under CEQA would still apply even if Snowy Plover was relatively common in, for example, Mono County. Assertions implying that a species necessarily does not warrant inclusion on a list of locally rare species if it is common elsewhere in California simply because it occurs rarely in Ventura County within a political boundary are incorrect. As the Snowy Plover example indicates, there will be instances when a locally rare species must be considered rare under CEQA despite the species’ common occurrence elsewhere in California.

Snowy Plover on the Pacific Coast is protected under the federal ESA based on the concept of a “distinct population segment” (DPS). Something similar to the DPS concept could be used to determine whether a locally rare species is, in fact, endangered, threatened, or rare under CEQA. The federal ESA allows a DPS, defined according to geographic or reproductive isolation, to be treated as a “species”. Therefore, as in the Snowy Plover example, a DPS can be listed even though the populations of the taxonomic species are common elsewhere. CEQA does not preclude use of the DPS concept to assist in understanding whether a species is endangered, threatened, or rare based on its local rarity; on the contrary, the CEQA Guidelines definition of “rare” appears to invite the consideration of similar circumstances that would inform the determination of a DPS under the federal ESA.

Under CEQA, lead agencies have considerable discretion in determining whether a species should be considered rare or sensitive. See, for example, the *State CEQA Guidelines* Appendix G checklist cited above, which indicates that lead agencies may designate candidate, sensitive, or special-status species in local or regional plans, policies, or regulations. A list of locally rare or sensitive species, if it is

developed based on evidence that the local rarity meets the CEQA criteria for rarity, will effectively establish a rebuttable presumption of significance for species that may be adversely affected by a project. In this respect, a list of locally rare species as presented below will function in a manner similar to the threshold of significance that a lead agency may establish. CEQA requires, however, that thresholds of significance for general use in a lead agency's environmental review process "must be adopted by ordinance, resolution, rule, or regulation, and developed through a public review process and be supported by substantial evidence." Guidelines §15064.7. For a list of locally rare or sensitive species to function as a set of thresholds of significance, therefore, the list should be adopted through a public review process. Even if the list is not adopted through a public review process, it will establish substantial evidence of rarity if it is accompanied by additional information showing, for example, that the local occurrences of a listed species constitute a substantial portion of the species' range.

CNPS believes that this list of locally rare plants meets the definitions of rarity, at least locally, to satisfy consideration under CEQA. This checklist is supported by substantial evidence in the files of the author and data obtained from public herbaria and knowledgeable local botanists. Many of the taxa listed in this checklist are also listed by CNPS as rare or sensitive statewide, as well as those taxa formally listed under the California and/or federal ESA.

This checklist is updated regularly based on new information on the Ventura County flora. Species are added or deleted from this list as the new data warrant; therefore, be sure to obtain the most up-to-date version of this checklist. For example, for this update, compared to the 20 June 2011 (19<sup>th</sup>) edition (previous), 76 taxa were added, 50 were dropped (listed at end of this list), 54 had some sort of name change or a spelling error corrected, 76 had their rarity status changed (usually lowered from Rare to Uncommon), and 3 taxa were added to the "expected to occur" list. Future changes to this list will not likely be as dramatic as the status of the flora of Ventura County is now better understood after extensive searches of California public herbaria were conducted through the Jepson Herbarium on-line Consortium database. However, information on the flora is continually expanding with every botanical survey conducted, which may result in additional occurrences of plants on this list, or taxa not previously known to occur in Ventura County.

The most up-to-date version can be downloaded (as a PDF) from the Channel Islands Chapter CNPS website at [www.cnpsci.org](http://www.cnpsci.org), or by contacting the author directly. Please send your notes on corrections, errors, and plant populations/occurrences you are aware of that may not be on this checklist to the author: David Magney, P.O. Box 1346, Ojai, CA 93024-1346 or via email at [david\(at\)magney\(dot\)org](mailto:david(at)magney(dot)org). Also contact the author if you need any specific locality data on any particular taxon included in this checklist.

## Checklist of Rare Plants

<u>Scientific Name</u> <sup>10</sup>	<u>Common Name</u> <sup>11</sup>
<i>Abies concolor</i> (Gordon & Glendinning) Lindl. Ex Hildebr.	California White Fir (S, LPNF <sup>12</sup> )
<i>Abronia maritima</i> Nutt. ex S. Watson	Red or Sticky Sand-verbena (S, CNPS 4.2)
<i>Abronia maritima</i> Nutt. ex S. Watson X <i>A. umbellata</i> Lam.	Hybrid Sand-verbena (R)
<u><i>Abronia neurophylla</i> Standl.</u>	<u>Beach Sand-verbena (R)</u>
<i>Abronia pogonantha</i> Heimerl	Desert Sand-verbena (R)
<i>Abronia turbinata</i> Torr. ex S. Watson	Turbinate Sand-verbena (R)
<i>Abronia villosa</i> S. Watson var. <i>aurita</i> (Abrams) Jeps.	Woolly Sand-verbena (R, CNPS 1B.1)
<i>Acamptopappus sphaerocephalus</i> (Har. & A. Gray) A. Gray var. <i>sphaerocephalus</i>	Rayless Goldenhead (R)
<i>Acanthomintha obovata</i> var. <i>cordata</i> Jokerst	Heartleaf Thornmint (S, CNPS 4.2)
<i>Acanthoscyphus parishii</i> var. <i>abramsii</i> (E.A. McGregor) Reveal	Abrams Spineflower (U, CNPS 1B.2)
<i>Acanthoscyphus</i> [ <i>Oxytheca</i> ] <i>parishii</i> (Parry) Small var. <i>parishii</i>	Parish's <i>Oxytheca</i> (R, CNPS 4.2)
<i>Acer negundo</i> var. <i>californicum</i> (Torrey & A. Gray) Sarg.	Box Elder (R)
<u><i>Achillea millefolium</i> var. <i>arenicola</i> (Heller) Nobs in Ferris</u>	<u>Common Island White Yarrow (U)</u>
<i>Achillea millefolium</i> var. <i>californica</i> (Pollard) Jepson	California White Yarrow (U)
<i>Achillea millefolium</i> var. <i>occidentale</i> DC	Woolly White Yarrow (U)
<i>Achillea millefolium</i> var. <i>pacifica</i> (Rydb.) G.N. Jones	Pacific White Yarrow (R)
<u><i>Acmispon argophyllum</i> ssp. <i>argenteus</i> (Dunkle) Brouillet</u>	<u>Silver Deervetch (U)</u>
<u><i>Acmispon argophyllum</i> ssp. <i>nivius</i> (E. Greene) Brouillet</u>	<u>Santa Cruz Island Silverhosackia (R)</u>
<u><i>Acmispon dendroideus</i> (Greene) Brouillet var. <i>dendroideus</i></u>	<u>Island Broom (R)</u>
<u><i>Acmispon dendroideus</i> var. <i>veatchii</i> (Greene) Brouillet</u>	<u>San Miguel Island Deerweed (R)</u>
<i>Acmispon denticulatus</i> (Drew) D.D. Sokoloff	White Lotus (R)
<i>Acmispon heermanii</i> (Durand & Hilg.) Brouillet var. <i>heermanii</i>	Heerman Lotus or Hosackia (R)
<i>Acmispon heermanii</i> var. <i>orbicularis</i> (Gray) Brouillet	Heerman Lotus (R)
<i>Acmispon junceus</i> (Benth.) Brouillet var. <i>junceus</i>	Rush Lotus (R)
<i>Acmispon micranthus</i> (Torrey & A. Gray) Brouillet	Grab Hosackia or Lotus (R)
<i>Acmispon nevadensis</i> var. <i> davidsonii</i> (Greene) Brouillet	Suphur-flowered Hosackia (U)
<i>Acmispon nevadensis</i> (S. Watson) Brouillet var. <i>nevadensis</i>	Sierra Nevada Hosackia (R)
<i>Acmispon parviflorus</i> (Benth.) Brouillet	Tiny Lotus (R)
<i>Acmispon prostratus</i> (T. & G.) Brouillet	Nuttall's Lotus (R, 1B.1)
<i>Adenostoma sparsifolium</i> Torrey	Red Shank, Ribbon-bush (U)
<i>Aesculus californica</i> (Spach) Nutt.	California Buckeye (R)
<i>Agoseris elata</i> (Nuttall) E. Greene	Tall Mountain Dandelion (R)
<i>Agrostis exarata</i> Trin.	Western or Spike Bentgrass (U)
<i>Agrostis hallii</i> Vasey	Hall's Bentgrass (R)
<i>Agrostis pallens</i> Trin.	Thingrass (R)
<i>Agrostis stolonifera</i> var. <i>palustris</i> (Hudson) Pers.	Creeping Bentgrass (U)
<i>Alisma plantago-aquaticum</i> L.	Common or Broadleaf Water-plantain (R)
<i>Allium amplexans</i> Torrey	Narrowleaf Onion (R)
<i>Allium burlewii</i> A. Davidson	Burlew Onion (U)
<i>Allium cratericola</i> Eastw.	Cratered Onion (R)
<i>Allium denticulatum</i> (Traub) D. McNeal	Dentate Fringed Onion (R)
<i>Allium fimbriatum</i> var. <i>mohavense</i> Jepson	Mojave Onion (R)
<i>Allium haemaetochiton</i> S. Watson	Red-skinned Onion (U)

<sup>10</sup> Scientific name: The complete scientific name is provided for each taxon and consists of the genus, species, and author (person who formally described and named the plant). Underlined entries indicate taxa found only on the Channel Islands (Anacapa or San Nicolas Islands).

<sup>11</sup> Common names are given for all taxa, many of which are invented by the author as no common name has been identified otherwise. "R", "U", "Limits", or "Type" in parentheses indicated the category of rarity: R = rare (formally listed by USFWS, CDFG, CNPS, or with 5 or fewer occurrences in Ventura County); U = uncommon (with 6 to 10 occurrences in Ventura County); Limits = indicate taxon reaches its distribution limits in Ventura County; Type = type locality is within Ventura County.

<sup>12</sup> LPNF = Los Padres National Forest Sensitive Plant List

**Scientific Name**

*Allium howellii* var. *clokeyi* Traub  
*Allium lacunosum* var. *davisiae* (M.E. Jones) D. McNeal  
*Allium lacunosum* S. Watson var. *lacunosum*  
*Allium monticola* Davidson  
*Allium parryi* S. Watson  
*Allium parvum* Kellogg  
*Allium peninsulare* Lemmon var. *peninsulare*  
*Allium praecox* Brandege  
*Allium sanbornii* Alph. Wood var. *sanbornii*  
*Allium tribracteatum* Torrey  
*Allium vineale* L.  
*Allophyllum divaricatum* (Nuttall) A.D. Grant & V. Grant  
*Allophyllum gilioides* (Benth.) A.D. Grant & V. Grant ssp. *gilioides*  
*Allophyllum integrifolium* (Brand) A.D. Grant & V. Grant  
*Alnus incana* ssp. *tenuifolia* (Nuttall) Breitung  
*Alopecurus carolinianus* Walter  
*Alopecurus saccatus* Vasey  
*Amaranthus californicus* (Moq.) S. Watson  
*Amaranthus palmeri* S. Watson ssp. *palmeri*  
*Amaranthus powellii* ssp. *bouchenii* (Thell.) Costea & Carretero  
*Amaranthus powellii* S. Watson ssp. *powellii*  
*Ambrosia confertiflora* DC.  
*Ambrosia dumosa* (A. Gray) Payne  
*Ambrosia salsola* var. *fasciculata* (A. Nelson) Stother & B.G. Baldwin  
*Ambrosia salsola* (T.&G. Ex G.) Stother & B.G. Baldwin var. *salsola*  
*Amelanchier alnifolia* var. *pumila* (Nuttall) Nelson  
*Amelanchier pallida* E. Greene  
*Amelanchier utahensis* Koehne  
*Ammannia coccinea* Rottb.  
*Ammannia robusta* Heer & Regel  
*Amsinckia douglasiana* A. DC.  
*Amsinckia eastwoodae* J.F. Macbr.  
*Amsinckia spectabilis* Fischer & C. Meyer var. *spectabilis*  
*Amsinckia tessellata* var. *gloriosa* (Suksd.) Hoover  
*Amsinckia tessellata* Gray var. *tessellata*  
*Amsinckia vernicosa* Hook. & Arn. var. *vernicosa*  
*Andropogon glomeratus* var. *pumilus* Vasey ex Dewey  
*Andropogon glomeratus* var. *scabriglumis* C.S. Campbell  
*Androsace elongata* ssp. *acuta* (E. Greene) G. Robb.  
*Antennaria dimorpha* (Nuttall) Torrey & A. Gray  
*Anthoxanthum occidentale* (Buckley) Veldkamp  
*Antirrhinum coulterianum* Benth. ssp. *coulterianum*  
*Antirrhinum nuttallianum* Benth. ssp. *nuttallianum*  
*Antirrhinum nuttallianum* ssp. *subsessile* (A. Gray) D. Thompson  
*Antirrhinum ovatum* Eastwood  
*Aphanes occidentalis* (Nuttall) Rydb.  
*Aphanisma blitoides* Moq.  
*Apocynum androsaemifolium* L.  
*Apocynum Xmedium* E. Greene (A. *androsaemifolium* ssp. *a.* var. *incanum* X A. *cannabinum* var. *hypericifolium*)  
*Aquilegia eximia* Van Houtte ex Planchon  
*Aquilegia formosa* var. *truncata* (Fischer & C.A. Meyer) Baker  
*Aralia californica* S. Watson  
*Arbutus menziesii* Pursh  
*Arceuthobium abietinum* (Engelm.) Hawksw. & Wiens forma *concoloris*  
*Arceuthobium californicum* Hawksworth & Wiens  
*Arceuthobium campylopodum* Engelm.

**Common Name**

Mount Piños Onion (Type, CNPS 1B.3)  
Davis Onion (R, W Limits)  
Pitted Onion (R)  
Mountain Onion (R)  
Parry Fringed Onion (R)  
Small Onion (R)  
Peninsular Onion (U)  
Early Onion (R)  
Sanborn Onion (R)  
Three-bracted Onion (R)  
Wild Garlic (R)  
Divaricate Allophyllum (R)  
Stragglng Gilia (R)  
Sticky Allophyllum (R)  
Mountain Alder (R, Disjunct, S Limits)  
Carolina Foxtail (R)  
Pacific Foxtail (R)  
California Amaranth (R)  
Palmer Amaranth (U)  
Bouchenl Amaranth (R)  
Powell Amaranth (U)  
Weak-leaved Burweed or Bur-sage (R)  
White Bur-sage (R)  
White Burrobrush (R)  
Burrobrush (R)  
Alderleaf Service-berry (R)  
Western or Pallid Service-berry (R, Type)  
Utah Service-berry (R)  
Long-leaved or Purple Ammannia (R)  
Grand Redstem (R)  
Douglas Fiddleneck (R, CNPS 4.2)  
Elegant Fiddleneck (R)  
Showy Fiddleneck\_(U)  
Glorious Fiddleneck (U)  
Devil's Lettuce, Tessellate Fiddleneck (U)  
Vernal or Green Fiddleneck (R)  
Bushy Bluestem (R)  
Southwestern Bushy Bluestem (R)  
Rock-jasmine (R)  
Low Everlasting (R)  
California Sweet Grass (R)  
White Snapdragon (U)  
Nuttall Snapdragon (R)  
Nuttall Snapdragon (R)  
Oval-leaved Snapdragon (R, CNPS 4.2)  
Dew-cup, Lady's Mantle (R)  
Aphanisma (R, CNPS 1B.2)  
Bitter Dogbane (R)  
Bitter Dogbane (R)  
Van Houtte Columbine (R)  
Truncate Crimson Columbine (U)  
Elk Clover, Spikenard (R)  
Pacific Madrone (R)  
Dwarf Fir Mistletoe (R)  
Sugar Pine Dwarf Mistletoe (R)  
Western Dwarf Mistletoe (U)

**Scientific Name**

*Arceuthobium cyanocarpum* Coulter & A. Nelson  
*Arceuthobium divaricatum* Engelm.  
*Arceuthobium occidentale* Engelm.  
*Arctostaphylos canescens* Eastw.  
*Arctostaphylos glandulosa* ssp. *adamsii* (Munz) Munz  
*Arctostaphylos glandulosa* Eastw. X.A. *glauca* Lindley  
*Arctostaphylos patula* Greene  
*Argemone corymbosa* E. Greene ssp. *corymbosa*  
*Argemone munita* ssp. *rotundata* (Rydb.) G. B. Ownbey  
*Argentina egedii* (Wormsk.) Rydb. ssp. *egedii*  
*Aristida adscensionis* L.  
*Aristida divaricata* Humb. & Bonpl. ex Willd.  
*Aristida purpurea* Nuttall var. *purpurea*  
*Aristida ternipes* var. *hamulosa* (Henrard) J.S. Trent  
*Arnica discoidea* Benth. var. *discoidea*  
*Ambrosia artemisiifolia* L.  
*Artemisia ludoviciana* Nuttall ssp. *ludoviciana*  
*Artemisia nesiotica* Raven  
*Artemisia tridentata* ssp. *parishii* (Gray) H.M. Hall & Clements  
*Artemisia tridentata* ssp. *vaseyana* (Rydb.) Beetle  
*Arthrocnemum [Salicornia] subterminalis* (Parish) Standley  
*Asclepias erosa* Torrey  
*Asclepias vestita* Hook. & Arn.  
*Asplenium vespertinum* Maxon  
*Aster ascendens* Lindley  
*Aster chilensis* Nees  
*Aster lanceolatus* ssp. *hesperius* (Gray) Semple & Chmielewski  
*Aster lentus* E. Greene  
*Astragalus asymmetricus* E. Sheldon  
*Astragalus brauntonii* Parish  
*Astragalus coccineus* Brandege  
*Astragalus curtipes* A. Gray  
*Astragalus didymocarpus* Hook. & Arn. var. *didymocarpus*  
*Astragalus didymocarpus* var. *dispermus* (A. Gray) Jepson  
*Astragalus didymocarpus* var. *milesianus* (Rydb.) Jeps.  
*Astragalus didymocarpus* var. *obispoensis* (Rydb.) Jeps.  
*Astragalus douglasii* var. *parishii* (Gray) M.E. Jones  
*Astragalus filipes* Gray  
*Astragalus gambelianus* E. Sheldon  
*Astragalus lentiginosus* Hook. var. *diphysus*  
*Astragalus lentiginosus* Hooker var. *fremontii* (A. Gray) S. Watson  
*Astragalus lentiginosus* var. *nigricalycis* M.E. Jones  
*Astragalus lentiginosus* var. *sierrae* M.E. Jones  
*Astragalus leucolobus* M.E. Jones  
*Astragalus leucopsis* Torrey var. *leucopsis*  
*Astragalus macrodon* (Hook. & Arn.) Gray  
*Astragalus miguelensis* Greene  
*Astragalus nuttallii* (Torrey & A. Gray) J.T. Howell var. *nuttallii*  
*Astragalus oxyphysus* Gray  
*Astragalus pomonensis* M.E. Jones  
*Astragalus purshii* Douglas ex Hooker var. *purshii*  
*Astragalus pycnostachyus* var. *lanosissimus* (Rydb.) Munz  
*Astragalus traskiae* Eastwood

**Common Name**

Limber Pine Dwarf Mistletoe (R)  
Pinyon Dwarf Mistletoe (U)  
Foothill Pine Dwarf Mistletoe (R)  
Hoary Manzanita (R)  
Adams Eastwood Manzanita (R)  
Eastwood-Bigberry Manzanita Hybrid (R)  
Greenleaf Manzanita (R)  
Desert Prickly Poppy (R)  
Prickly Poppy (R)  
Pacific Coast Cinquifol or Silverweed (R)  
Sixweeks Threawn Grass (R)  
Poverty Threawn Grass (R)  
Purple Three-awn Grass (R)  
Hook Threawn Grass (R)  
Rayless or Discoid Arnica (R)  
Common Ragweed (R)  
Silver or Western Mugwort (R)  
Island Sagebrush (R)  
Parish Great Basin Sagebrush (R, W Limits)  
Vasey Great Basin or Mountain Sagebrush (U)  
Common or Parish Glasswort (U)  
Desert Milkweed (U)  
Woolly Milkweed (R)  
Western Spleenwort (R, CNPS 4.2)  
Long-leaved Aster (R)  
Common California Aster (U)  
Siskiyou Aster (R)  
Suisun Marsh Aster (R)  
Cockeyed Milkvetch (R)  
Braunton Milkvetch (R, CNPS 1B.1, FE<sup>13</sup>)  
Scarlet Milkvetch (R)  
San Luis Obispo Milkvetch (R)  
Two-seeded Milkvetch (U)  
Disperse Two-seeded Milkvetch (R)  
South Coast Two-seeded Milkvetch (R, CNPS 1B.2)  
San Luis Obispo Two-seeded Milkvetch (R)  
Parish Milkvetch (R)  
Thread-leaved Locoweed (U)  
Dwarf Locoweed (U)  
Freckled Locoweed (R)  
Fremont Spotted Locoweed (U)  
Black-sepaled Freckled Locoweed (R)  
Bear Valley Milkvetch (R, CNPS 1B.2)  
Bear Valley Woollypod (R, CNPS 1B.2)  
Coast Rattleweed (R)  
Salinas Valley Milkvetch (R, CNPS 4.3)  
San Miguel Milkvetch (R, CNPS 4.3)  
Nuttall's Milkvetch (R, CNPS 4.2)  
Robust Milkvetch (R)  
Pomona Locoweed (R)  
Pursh's Woollypod Milkvetch (R)  
Ventura Marsh Milkvetch (R, CNPS 1B.1, FE, SE<sup>14</sup>)  
Trask Locoweed or Milkvetch (R, CNPS 1B.2)

<sup>13</sup> FE = Federally listed Endangered.

<sup>14</sup> SE = State listed Endangered

**Scientific Name**

*Astragalus trichopodus* (Nutt.) Gray var. *trichopodus*  
*Astragalus whitneyi* Gray var. *whitneyi*  
*Astragalus whitneyi* var. *pinosus* Elmer  
*Atriplex argentea* Nutt. var. *argentea*  
*Atriplex argentea* var. *expansa* (S. Watson) S.L. Welsh & Reveal  
*Atriplex argentea* var. *mohavensis* (M.E. Jones) S.L. Welsh  
*Atriplex canescens* (Pursh) Nutt. var. *laciniata* Parish in Jepson  
*Atriplex linearis* S. Watson  
*Atriplex coulteri* (Moq.) D. Dietr.  
*Atriplex dioica* Raf.  
*Atriplex lentiformis* (Torrey) S. Watson ssp. *lentiformis*  
*Atriplex pacifica* Nelson  
*Atriplex polycarpa* (Torrey) S. Watson  
*Atriplex prostrata* Boucher ex de Candolle  
*Atriplex serenana* var. *davidsonii* (Standley) Munz  
*Atriplex serenana* Nelson var. *serenana*  
*Atriplex watsonii* Nelson  
*Azolla filiculoides* Lam.  
*Baccharis salicina* Torrey & A. Gray  
*Baccharis malibuensis* Beauchamp & Henrickson  
*Baccharis plummerae* Gray ssp. *plummerae*  
*Bahiopsis laciniata* (A. Gray) E.E. Schill.  
*Batis maritima* L.  
*Berberis dictyota* Jeps.  
*Berberis pinnata* ssp. *insularis* Munz  
*Berberis pinnata* Lagasca ssp. *pinnata*  
*Berula erecta* (Huds.) Coville  
*Bidens frondosa* L.  
*Bidens laevis* (L.) Britton, Sterns & Pogg.  
*Boechera breweri* (S. Watson) Al-Shehbaz ssp. *breweri*  
*Boechera californica* (Rollins) Windham & Al-Shehbaz  
*Boechera repanda* (S. Watson) Al-Shehbaz  
*Boechera retrofracta* (Graham) A. Löve & D. Löve  
*Boechera xylopoda* Windham & Al-Shehbaz  
*Boerhavia coccinea* Mill.  
*Bolboschoenous maritimus* X *B. robustus*  
*Bolboschoenous robustus* (Pursh) Soják, Čas. Nár.  
*Boschniakia strobilacea* Gray  
*Bothriochloa barbinodis* (Lagasca) Herter  
*Botrychium simplex* E. Hitchc.  
*Boykinia occidentalis* T. & G.  
*Boykinia rotundifolia* C. Parry  
*Brickellia californica* (T. & G.) Gray X *B. nevinii* Gray  
*Brickellia desertorum* Coville  
*Brickellia multiflora* Kellogg  
*Brodiaea coronaria* (Salisbury) Jepson ssp. *coronaria*  
*Brodiaea terrestris* ssp. *kernensis* (Hoover) Niehaus  
*Bromus arizonicus* (Shear) Stebbins  
*Bromus maritimus* (Piper) Hitchcock  
*Bromus orcuttianus* (Shear) A. Hitchc.  
*Bromus porteri* (J.M. Coult.) Nash  
*Bromus pseudolaevipes* Wagnon  
*Cakile edentula* (Bigelow) Hooker ssp. *edentula*  
*Calandrinia breweri* S. Watson  
*Californica macrophylla* (H. & A.) Aldas., C. Navarro, P. Vargas, Ll. Saez & Aedo  
*Callitriche marginata* Torrey

**Common Name**

Three-pod Milkvetch (U)  
Whitney Locoweed (R)  
Mount Pinos Locoweed (R, Type)  
Silterscale (R)  
Broad Silterscale (R)  
Mojave Silterscale (R)  
Caleb Saltbush (R)  
Slenderleaf Saltbush (R)  
Coulter Saltbush (R, CNPS 1B.2)  
Thickleaf Orach (R)  
Big Saltbush, Quailbrush (W Limits)  
South Coast Saltbush (R, CNPS 1B.2)  
Common Saltbush, Allscale (U)  
Spearscale (U)  
Davidson Bractscale (R, CNPS 1B.2)  
Bractscale (R)  
Matscale (R)  
Duckweed Fern (U)  
Emory Baccharis (R)  
Malibu Baccharis (R, CNPS 1B.1)  
Plummer Baccharis (CNPS 4.3)  
San Diego County Viguiera (R)  
Saltwort, Beachwort (R)  
Dull-leaf Barberrry (R)  
Island Barberrry (R, FE, SE, CNPS 1B.1)  
Pinnate-leaved Barberrry (R)  
Cutleaf Water-parsnip (U)  
Sticktight (R)  
Bur-marigold (R)  
Brewer Rockcress (R, S Limits)  
California Rockcress (R)  
Yosemite Rockcress (U)  
Holboell Rockcress (R)  
Desert Rockcress (R, SW Limits)  
Scarlet Spiderling (R)  
Hybrid Bulrush (R)  
Seashore Bulrush (R)  
California Ground Cone (R)  
Cane Bluestem (U)  
Least Moonwort, Little Grapefern (R)  
Santa Lucia Brookfoam (R)  
Roundleaved Boykinia (R)  
California-Nevin Brickellbush Hybrid (R)  
Desert Brickellbush (R)  
Gum-leaved Brickellbush (R)  
Crown Brodiaea (R)  
Harvest Brodiaea (R)  
Arizona Brome (U)  
Maritime Brome (R)  
Orcutt Brome (R)  
Nodding Brome (R)  
Woodland Brome (R)  
American Searocket (R)  
Brewer Calandrinia (R, CNPS 4.2)  
Largeleaf Filaree (R, CNPS 1B.1)  
California Water-starwort, Wallow Starwort (R)

**Scientific Name**

**Common Name**

<i>Calochortus catalinae</i> S. Watson	Catalina Mariposa Lily (CNPS 4.2)
<i>Calochortus clavatus</i> S. Watson ssp. <i>clavatus</i>	Club-haired Mariposa Lily (C, CNPS 4.3)
<i>Calochortus clavatus</i> ssp. <i>gracilis</i> Ownby	Slender Club-haired Mariposa Lily (R, CNPS 1B.2)
<i>Calochortus clavatus</i> ssp. <i>pallidus</i> (Hoover) Munz	Pale Yellow Mariposa Lily (U)
<i>Calochortus coeruleus</i> (Kellogg) S. Watson	Beavertail-grass (R)
<i>Calochortus fimbriatus</i> H.P. McDonald	Late-flowered Mariposa Lily (R, CNPS 1B.2)
<i>Calochortus luteus</i> Lindley	Gold Nuggets (R)
<i>Calochortus palmeri</i> S. Watson var. <i>palmeri</i>	Palmer Mariposa Lily (U, CNPS 1B.2)
<i>Calochortus plummerae</i> Greene	Plummer Mariposa Lily (S, CNPS 4.2)
<i>Calyptridium monospermum</i> Greene	One-seeded Pussypaws (R)
<i>Calyptridium parryi</i> Gray var. <i>parryi</i>	Parry Calyptridium (U)
<i>Calyptridium umbellatum</i> (Torrey) Greene	Pussypaws (U)
<i>Calystegia macrostegia</i> ssp. <i>amplissima</i> Brummitt	Island Morning-glory (R, CNPS 4.3)
<i>Calystegia malacophylla</i> ssp. <i>tomentella</i> var. <i>deltoida</i> (Greene) Munz	Tehachapi Morning-glory (R)
<i>Calystegia occidentalis</i> ssp. <i>fulcrata</i> (Gray) Brummitt	Western Morning-glory (R)
<i>Calystegia occidentalis</i> ssp. <i>occidentalis</i> var. <i>tomentella</i> (Greene) Brummitt	Woolly Western Morning-glory (R)
<i>Calystegia peirsonii</i> (Abrams) Brummitt	Peirson's Morning-glory (R, CNPS 4.2)
<i>Calystegia sepium</i> ssp. <i>binghamiae</i> (Greene) Brummitt	Santa Barbara Morning-glory (R, CNPS 1A)
<i>Calystegia soldanella</i> (L.) R. Br.	Beach Morning-glory (U)
<i>Camissonia boothii</i> ssp. <i>desertorum</i> (Munz) P.H. Raven	Desert Shredding Primrose (R)
<i>Camissonia boothii</i> ssp. <i>rutila</i> (Davidson) Munz	Booth's Shredding Primrose (R)
<i>Camissonia brevipes</i> (A. Gray) Raven ssp. <i>brevipes</i>	Yellow Cups (R)
<i>Camissonia campestris</i> cf. ssp. <i>obispoensis</i> Raven	San Luis Obispo Sun-cup (R)
<i>Camissoniopsis cheiranthifolia</i> (Sprengel) W.L. Wagner & Hoch ssp. <i>cheiranthifolia</i>	Beach Primrose (R)
<i>Camissonia contorta</i> (Douglas) P.H. Raven	Contorted Primrose (R)
<i>Camissonia kernensis</i> (Munz) P.H. Raven ssp. <i>kernensis</i>	Kern County Primrose (R)
<i>Camissonia lacustris</i> P.H. Raven	Lakeside Primrose (R)
<i>Camissonia palmeri</i> (S. Watson) Raven	Palmer Primrose (U)
<i>Camissoniopsis confusa</i> (P.H. Raven) W.L. Wagner & Hoch	Confusing Primrose (U)
<i>Camissoniopsis ignota</i> (Jepson) W.L. Wagner & Hoch	Small Primrose (U)
<i>Camissoniopsis luciae</i> (P.H. Raven) W.L. Wagner & Hoch	Santa Lucia Sun-cup (R)
<i>Camissoniopsis pallida</i> (Abrams) W.L. Wagner & Hoch ssp. <i>pallida</i>	Pale Primrose (R)
<i>Cardamine breweri</i> S. Watson var. <i>breweri</i>	Brewer's Bitter-cress (R)
<i>Cardamine oligosperma</i> Torrey & Gray	Few-seeded Bitter-cress (U)
<i>Cardamine pachystigma</i> (S. Watson) Rollins var. <i>pachystigma</i>	Toothwort (R)
<i>Cardionema ramosissimum</i> (Weinm.) A. Mels. & J.F. Macbr.	Sand Mat (R)
<i>Carex abrupta</i> Mackenzie	Abrupt-beaked Sedge (R)
<i>Carex athrostachya</i> Olney	Slender-beaked Sedge (R)
<i>Carex aurea</i> Nuttall	Golden-fruited Sedge (R)
<i>Carex barbarae</i> Dewey	Santa Barbara Sedge (R)
<i>Carex bolanderi</i> Olney	Bolander Sedge (R)
<i>Carex brainerdii</i> Mack.	Brainerd Sedge (R)
<i>Carex densa</i> L. Bailey	Dense Sedge (R)
<i>Carex douglasii</i> Boott	Douglas Sedge (U)
<i>Carex filifolia</i> var. <i>erostrata</i> Kük.	Short-grass Sedge (R)
<i>Carex fracta</i> Mackenzie	Fragile-sheathed Sedge (R)
<i>Carex globosa</i> Boott	Round-fruited Sedge (R)
<i>Carex hassei</i> L. Bailey	Hasse Sedge (R)
<i>Carex lanuginosa</i> Michaux	Woolly Sedge (R)
<i>Carex multicaulis</i> L. Bailey	Many-stemmed Sedge (R)
<i>Carex nebrascensis</i> Dewey	Nebraska Sedge (R)
<i>Carex pansa</i> L. Bailey	Sand Dune Sedge (R)
<i>Carex pellita</i> Muhl. ex Willd.	Woolly Sedge (R)
<i>Carex rossii</i> Boott	Ross Sedge (R)
<i>Carex schottii</i> Dewey	Schott Sedge (R)
<i>Carex spissa</i> L.H. Bailey	San Diego Sedge (R)

**Scientific Name**

**Common Name**

<i>Carex subfusca</i> W. Boott	Brown Sedge (U)
<i>Carex triquetra</i> Boott	Triangular-fruited Sedge (R)
<i>Castilleja angustifolia</i> (Nuttall) G. Don	Desert Indian Paintbrush (R)
<i>Castilleja applegatei</i> ssp. <i>disticha</i> (Eastw.) Chuang & Heckard	Eastwood Indian Paintbrush (R)
<i>Castilleja applegatei</i> ssp. <i>pinetorum</i> (Fern.) Chuang & Heckard	Wavyleaf Indian Paintbrush (U)
<i>Castilleja attenuata</i> (Gray) Chuang & Heckard	Valley Tassels (R)
<i>Castilleja densiflora</i> (Benth.) Chuang & Heckard ssp. <i>densiflora</i>	Dense-flowered Owl's Clover (R)
<u><i>Castilleja lanata</i> ssp. <i>hololeuca</i> (Greene) Chuang &amp; Heckard</u>	<u>White-felted Indian Paintbrush</u> (R, CNPS 1B.2)
<i>Castilleja miniata</i> Hook. ssp. <i>miniata</i>	Great Red Indian Paintbrush (U)
<i>Castilleja minor</i> (A. Gray) A. Gray ssp. <i>minor</i>	Annual Indian Paintbrush (R)
<u><i>Castilleja mollis</i> Pennell</u>	<u>Soft-leaved Indian Paintbrush</u> (R, CNPS 1B.1)
<i>Castilleja plagiotoma</i> A. Gray	Mojave Indian Paintbrush (R)
<i>Castilleja subinclusa</i> ssp. <i>franciscana</i> (Pennell) Chuang & Heckard	San Francisco Long-leaved Indian Paintbrush (U)
<i>Castilleja tenuis</i> (A.A. Heller) Chuang & Heckard	Bristle Owl's Clover (R)
<i>Caulanthus amplexicaulis</i> S. Watson var. <i>amplexicaulis</i>	Clasping-leaved Jewelflower (U)
<i>Caulanthus anceps</i> Payson	Lemmon Mustard (R)
<i>Caulanthus californicus</i> (S. Watson) Payson	California Jewelflower (R, FE)
<i>Caulanthus heterophyllus</i> (Nutt.) Payson var. <i>heterophyllus</i>	Different-leaved Jewelflower (R)
<i>Caulanthus inflatus</i> S. Watson	Desert Candle (R)
<i>Caulanthus lemmonii</i> S. Watson	Lemmon Jewelflower (U, CNPS 1B.2)
<i>Ceanothus cuneatus</i> var. <i>ramulosus</i> Greene	Coast Ceanothus (R)
<i>Ceanothus dentatus</i> T. & G.	Dentate Ceanothus (R)
<i>Ceanothus integerrimus</i> var. <i>macrothyrsus</i> (Torr.) Benson	Umpqua Deer Brush (R)
<u><i>Ceanothus megacarpus</i> var. <i>insularis</i> (Eastw.) Munz</u>	<u>Island Ceanothus</u> (R)
<i>Ceanothus megacarpus</i> var. <i>pendulous</i> McMinn	Pendulous Bigpod Ceanothus (R)
<i>Ceanothus oliganthus</i> var. <i>sorediatus</i> (Hook. & Arn.) Hoover	Jim Brush (R)
<i>Ceanothus palmeri</i> Trel.	Palmer Ceanothus (U)
<i>Ceanothus papillosus</i> T. & G. ssp. <i>papillosus</i>	Wartleaf Ceanothus (U)
<i>Ceanothus tomentosus</i> var. <i>olivaceous</i> Jepson	Woollyleaf Ceanothus (R)
<i>Ceanothus tomentosus</i> Parry var. <i>tomentosus</i>	Woollyleaf Ceanothus (R)
<i>Ceanothus thrysiflorus</i> Eschsch. ssp. <i>thrysiflorus</i>	Blue-blossom Ceanothus (R)
<i>Centaurea exaltatum</i> (Griseb.) W. Wright ex Piper	Great Basin Centaury (U)
<i>Centaureum venustum</i> (A. Gray) B.L. Robins. ssp. <i>venustum</i>	Beautiful Centaury, Canchalagua (R)
<i>Centromadia parryi</i> ssp. <i>australis</i> (Keck) B.G. Baldwin	Southern Tarplant (R, CNPS 1B.1)
<i>Centrostegia thurberi</i> var. <i>macrotheca</i>	Thurber Spineflower (R)
<i>Ceratophyllum demersum</i> L.	Hornwort, Coontail (R)
<i>Cercocarpus betuloides</i> var. <i>blancheae</i> (C. Schneider) Little	Island Mountain Mahogany (R, CNPS 4.3)
<i>Cercocarpus ledifolius</i> var. <i>intermontanus</i> N. Holmgren	Cut-leaved Mountain Mahogany (R)
<i>Cercocarpus ledifolius</i> Nuttall var. <i>ledifolius</i>	Mountain Mahogany (U)
<i>Chaenactis artemisiifolia</i> (Gray) Gray	White Pincushion (U)
<i>Chaenactis fremontii</i> A. Gray	Desert Pincushion (R)
<i>Chaenactis glabriuscula</i> var. <i>heterocarpha</i> (A. Gray) H.M. Hall	Different-seeded Yellow Pincushion (R)
<i>Chaenactis glabriuscula</i> var. <i>lanosa</i> (DC.) H.M. Hall	Woolly Yellow Pincushion (U)
<i>Chaenactis glabriuscula</i> var. <i>megacephala</i> A. Gray	Big-flowered Yellow Pincushion (R)
<i>Chaenactis glabriuscula</i> var. <i>orcuttiana</i> (Greene) H.M. Hall	Woolly Yellow Pincushion (R, CNPS 1B.1)
<i>Chaenactis stevioides</i> Hook. & Arn.	Desert Pincushion (R)
<i>Chaenactis xantiana</i> Gray	Xantaw Pincushion (U)
<i>Chamaesyce melanadenia</i> (Torrey) Millsp.	Squaw Spurge (R)
<i>Chamaesyce micromera</i> (Engelm.) Wooton & Standl.	Sonoran Sandmat (R)
<i>Chamaesyce ocellata</i> (Durand & Hilg.) Millsp. ssp. <i>ocellata</i>	Littleleaf Spurge (R)
<i>Chamaesyce polycarpa</i> var. <i>hirtella</i> (Boiss.) Parish	Hairy Golondrina (R)
<i>Chamaesyce polycarpa</i> (Benth.) Millsp. var. <i>polycarpa</i>	Golondrina (R)
<i>Chamaesyce serpyllifolia</i> (Pers.) Small ssp. <i>serpyllifolia</i>	Thyme-leaved Spurge (R)
<i>Cheilanthes clevelandii</i> D.C. Eaton.	Cleveland Lip-fern (R)
<i>Cheilanthes cooperae</i> D.C. Eaton	Mrs. Cooper Lip-fern (R)
<i>Cheilanthes newberryi</i> (D.C. Eaton) Domin	Cotton Fern (R)



**Scientific Name**

*Chenopodium atrovirens* Rydb.  
*Chenopodium desiccatum* A. Nelson  
*Chenopodium fremontii* S. Watson  
*Chenopodium pratericola* Rydb.  
*Chloropyron maritimum* Benth. ssp. *maritimum*  
*Chorizanthe blakleyi* Hardham  
*Chorizanthe brevicornu* Torr. var. *brevicornu*  
*Chorizanthe clevelandii* C. Parry  
*Chorizanthe douglasii* Benth.  
*Chorizanthe membranacea* Benth.  
*Chorizanthe parryi* var. *fernandina* (S. Watson) Jepson  
*Chorizanthe procumbens* Nutt.  
*Chorizanthe staticoides* forma *bracteata* Goodman  
*Chorizanthe uniaristata* T. & G.  
*Chorizanthe watsonii* T. & G.  
*Chrysothamnus viscidiflorus* (Hook.) Nutt. ssp. *viscidiflorus*  
*Cicuta douglasii* (DC.) Coulter & Rose  
*Cirsium brevistylum* Cronq.  
*Cirsium scariosum* var. *citrinum* (Petr.) D.J. Keil  
*Cistanthe maritima* (Nuttall) Hershk.  
*Clarkia affinis* Lewis & Lewis  
*Clarkia cylindrica* ssp. *clavicaarpa* W. Davis  
*Clarkia dudleyana* (Abrams) J.F. Macbr.  
*Clarkia heterandra* (Torrey) H. Lewis & Raven  
*Clarkia modesta* Jeps.  
*Clarkia purpurea* ssp. *viminea* (Douglas) Lewis & Lewis  
*Clarkia rhomboidea* Douglas  
*Clarkia speciosa* F.H. Lewis & M.R. Lewis ssp. *speciosa*  
*Clarkia williamsonii* (Durand & Hilg.) H. Lewis & M. Lewis  
*Clarkia xantiana* Gray ssp. *xantiana*  
*Claytonia exigua* T. & G. ssp. *exigua*  
*Claytonia parviflora* ssp. *viridis* (Davidson) J.M. Miller & Chambers  
*Claytonia rubra* (J.T. Howell) Tidestrom ssp. *rubra*  
*Clinopodium douglasii* (Benth.) Kuntze  
*Clinopodium mimuloides* Kuntze  
*Collinsia bartsiiifolia* var. *davidsonii* (Parish) V. Newsom  
*Collinsia childii* A. Gray  
*Collinsia parryi* A. Gray  
*Collinsia parviflora* Lindley  
*Collinsia torreyi* var. *wrightii* (S. Watson) I.M. Johnston  
*Collomia grandiflora* Lindley  
*Collomia tinctoria* Kellogg  
*Comarostaphylis diversifolia* ssp. *planifolia* (Jeps.) G. Wallace  
*Convolvulus simulans* Perry  
*Cordylanthus rigidus* ssp. *setiferus* Chuang & Heckard  
*Coreopsis calliopsidea* (DC.) A. Gray  
*Cornus glabrata* Bentham  
*Cornus sericea* L. ssp. *sericea*  
*Crassula aquatica* (L.) Schönl.  
*Crepis acuminata* Nuttall  
*Crepis occidentalis* Nuttall ssp. *occidentalis*  
*Crepis occidentalis* ssp. *pumila* (Rydb.) Babcock & Stebbins  
*Cressa truxillensis* Kunth var. *truxillensis*  
*Cryptantha affinis* (A. Gray) E. Greene  
*Cryptantha barbiger* (A. Gray) E. Greene  
*Cryptantha corollata* (I.M. Johnston) I.M. Johnston

**Common Name**

Pigweed (R)  
Aridland Goosefoot (R)  
Fremont Goosefoot (U)  
Narrow-leaved Goosefoot (R)  
Saltmarsh Birds-beak (R, CNPS 1B.1, FE/SE)  
Blakley's Spineflower (R, CNPS 1B.3)  
Brittle Spineflower (R)  
Cleveland Spineflower (R)  
Douglas Spineflower (R)  
Pink Spineflower (R)  
San Fernando Valley Spineflower (R, SE)  
Prostrate Spineflower (R)  
Bracted Turkish Rugging (R, Type)  
One-awned Spineflower (R)  
Watson's Spineflower (U)  
Yellow Rabbitbrush (R)  
Western Water-hemlock (R)  
Indian Thistle (U)  
Elk Thistle (R)  
Seaside Redmaids (R, CNPS 4.2)  
Hairy Clarkia (R)  
Cylindrical Godetia (R)  
Dudley Godetia (R)  
California Gaura (U)  
Modest Clarkia (R)  
Large Purple Clarkia (R)  
Rhomboid Clarkia (U)  
Redspot Clarkia (R)  
Williamson's Clarkia (R)  
Xantus Clarkia (R)  
Small Miner's Lettuce (U)  
Green Small-flowered Miner's Lettuce (R)  
Red Miner's Lettuce (U)  
Yerba Buena (R)  
Monkeyflower Yerba Buena (R, CNPS 4.2)  
Davidson White Chinese Houses (R)  
Child Blue-eyed Mary (R)  
Parry Blue-eyed Mary (U)  
Blue-eyed Mary, Blue Lips (R)  
Wright Blue-eyed Mary (U)  
Large-flowered Collomia (U)  
Yellow-staining Collomia (R)  
Simpleleaf Summer Holly (R)  
Small-flowered Morning-glory (R)  
Dark-tipped Rigid Bird's-Beak (U)  
Leafy-stemmed Coreopsis (R)  
Brown Dogwood (R)  
American or Creek Dogwood (R)  
Water Pigmy-Weed (R)  
Long-leaved Hawksbeard (R)  
Western Hawksbeard (U)  
Western Hawksbeard (R)  
Spreading Alkali-Weed (U)  
Side-grooved Forget-Me-Not (R)  
Bearded Forget-Me-Not (R)  
Crowned Forget-Me-Not (Type)

<u>Scientific Name</u>	<u>Common Name</u>
<i>Cryptantha flaccida</i> (Lehm.) E. Greene	Flaccid Forget-Me-Not (R)
<i>Cryptantha leiocarpa</i> (Fischer & C. Meyer) E. Greene	Coast Forget-Me-Not (R)
<i>Cryptantha maritima</i> (Greene) Greene	Seaside Forget-Me-Not (R)
<i>Cryptantha mohavensis</i> (Greene) Greene	Mojave Forget-Me-Not (R)
<i>Cryptantha pterocarya</i> (Torr.) E. Greene	Wing-nut Forget-Me-Not (R)
<i>Cryptantha rattanii</i> E. Greene	Rattan's Forget-Me-Not (R)
<i>Cryptantha sparsiflora</i> (E. Greene) E. Greene	Few-flowered Forget-Me-Not (R)
<i>Cryptantha torreyana</i> (A. Gray) E. Greene	Torrey Forget-Me-Not (U)
<i>Cryptantha traskiae</i> I.M. Johnston	Trask Forget-Me-Not (U CNPS 1B)
<i>Cucurbita palmata</i> S. Watson	Coyote Melon (R)
<i>Cuscuta californica</i> var. <i>breviflora</i> Engelm.	California Dodder (R)
<i>Cuscuta campestris</i> Yuncker	Western Field Dodder (R)
<i>Cuscuta denticulata</i> Engelm.	Desert Dodder (R)
<i>Cuscuta indecora</i> Choisy var. <i>indecora</i>	Pretty Dodder (R)
<i>Cuscuta indecora</i> var. <i>neuropetala</i> (Engelm.) Hitchc.	Pretty Dodder (R)
<i>Cuscuta pacifica</i> Costea & M.A.R. Wright var. <i>pacifica</i>	Pacific Saltmarsh Dodder (R)
<i>Cuscuta salina</i> Englem. in W.H. Brewer, S. Watson, & A. Gray	Saltmarsh Dodder (U)
<i>Cycladenia humilis</i> var. <i>venusta</i> (Eastwood) Munz	Elegant Cycladenia (R)
<i>Cylindropuntia californica</i> var. <i>parkeri</i> (J.M. Coulter) Pinkava	Cane or Snake Cholla (U)
<i>Cyperus acuminatus</i> Torrey & Hook.	Short-pointed Umbrella-sedge (R)
<i>Cyperus erythrorhizos</i> Muhlenb.	Red-root Flatsedge (R)
<i>Cyperus laevigatus</i> L.	Smooth Flatsedge (R)
<i>Cyperus odoratus</i> L.	Flatsedge (R)
<i>Cyperus squarrosus</i> L.	Awned Flatsedge (R)
<i>Cystopteris fragilis</i> (L.) Bernhardt	Brittle or Fragile Fern (U)
<i>Danthonia unispicata</i> (Thurb.) Vasey	One-spike Oat Grass (R)
<i>Deinandra clementina</i> (Brandege) B.G. Baldwin	Island or Catalina Tarplant (R)
<i>Deinandra kelloggii</i> (E. Greene) E. Greene	Kellogg Tarplant (R)
<i>Deinandra minthornii</i> (Jepson) B.G. Baldwin	Santa Susana Tarplant (R, Type, SR)
<i>Deinandra paniculata</i> (A. Gray) Davidson & Moxley	Paniculate Tarplant (R, CNPS 4.2)
<i>Delphinium gracilentum</i> Greene	Coast Larkspur (R)
<i>Delphinium gypsophilum</i> Ewan ssp. <i>gypsophilum</i>	Gypsum Larkspur (U, CNPS 4.2)
<i>Delphinium hesperium</i> A. Gray	Western or Coast Larkspur (R)
<i>Delphinium inopinum</i> (Jeps.) H.F. Lewis & Epling	Unexpected Larkspur (U, CNPS 4.3)
<i>Delphinium parryi</i> ssp. <i>blochmaniae</i> (Greene) F.H. Lewis & Epling	Dune Larkspur (R, CNPS 1B.2)
<i>Delphinium parryi</i> ssp. <i>purpureum</i> (F. Lewis & Epling) M.J. Warnock	Mount Piños Larkspur (CNPS 4.3)
<i>Delphinium umbraculorum</i> F.H. Lewis & Epling	Umbrella Larkspur (R, CNPS 1B.3)
<i>Deschampsia cespitosa</i> (L.) Beauv. ssp. <i>cespitosa</i>	Tufted Hairgrass (R)
<i>Deschampsia danthanooides</i> (Trin.) Munro ex Benth	Annual Hairgrass (R)
<i>Descurainia adenophora</i> (Wooton & Standley) O.E. Schulz in H.G.A.	Engler Desert Tansy Mustard (R)
<i>Descurainia californica</i> (A. Gray) O.E. Schulz	California Tansy Mustard (R)
<i>Descurainia pinnata</i> ssp. <i>brachycarpa</i> (Richardson) Detling	xxxx Tansy Mustard (U)
<i>Descurainia pinnata</i> ssp. <i>glabra</i> (Wooton & Standl.) Detl.	Naken Western Tansy Mustard (R)
<i>Descurainia pinnata</i> ssp. <i>halicotorum</i> (Cockerell) Detl.	Western Tansy Mustard (R)
<i>Descurainia pinnata</i> ssp. <i>menziesii</i> (DC.) Detl.	Menzies Tansy Mustard (U)
<i>Dicentra pauciflora</i> S. Watson	Few-flowered Bleeding Heart (R)
<i>Dichelostemma congestum</i> (Sm.) Kunth	Ookow (R)
<i>Dichondra occidentalis</i> House	Western Dichondra (R, CNPS 4.2)
<i>Dieteria canescens</i> (Pursh) Torrey ssp. <i>canescens</i>	Hoary-Aster (U)
<i>Dieteria canescens</i> ssp. <i>leucanthemifolia</i> (Greene) D.R. Morgan & R.L. Hartm.	Whiteleaf Hoary-Aster (R)
<i>Dieteria canescens</i> ssp. <i>shastensis</i> (A. Gray) D.R. Morgan & R.L. Hartm.	Shasta Hoary-Aster (R)
<i>Dithyrea maritima</i> (A. Davids.) Davidson	Beach Spectacle-pod (R, CNPS 1B.1)
<i>Dodecatheon alpinum</i> (A. Gray) E. Greene	Alpine Shooting Star (R)
<i>Dodecatheon clevelandii</i> E. Greene ssp. <i>clevelandii</i>	Cleveland Shooting Star (R)
<i>Dodecatheon clevelandii</i> ssp. <i>patulum</i> (Greene) Thompson	Lowland Padre Shooting Star (R)
<i>Downingia bella</i> Hoover	Hoover Downingia (R)

**Scientific Name**

**Common Name**

<i>Downingia pulchella</i> (Lindl.) Torrey	Flat-face Downingia (R)
<i>Draba cuneifolia</i> T. & G.	Wedgeleaf Draba (R)
<i>Draba verna</i> L.	Vernal Whitlow-grass (R)
<i>Drymocallis glandulosa</i> var. <i>reflexa</i> (E. Greene) Ertter	Greene Cinquifol (U)
<i>Drymocallis glandulosa</i> var. <i>viscida</i> (Parish) Ertter	Sticky Cinquifol (R)
<i>Drymocallis glandulosa</i> var. <i>wrangelliana</i> (Fisch. & Avé-Lall.) Ertter	Wrangell's Cinquefoil (U)
<i>Dudleya abramsii</i> ssp. <i>parva</i> (Rose & Davids.) J. Bartel	Conejo Live-forever (R, FT, CNPS 1B.2)
<i>Dudleya blochmaniae</i> (Eastw.) Moran ssp. <i>blochmaniae</i>	Blochman Live-forever (U, CNPS 1B.1)
<i>Dudleya caespitosa</i> (Haw.) Britt. & Rose	Sea Lettuce (R)
<i>Dudleya cymosa</i> ssp. <i>agourensis</i> K. Nakai	Agoura Hills Live-forever (R, FT, CNPS 1B.2)
<i>Dudleya cymosa</i> (Lem.) Britton & Rose ssp. <i>cymosa</i>	Canyon Live-forever (R)
<i>Dudleya cymosa</i> ssp. <i>marcescens</i> Moran	Marcescent Live-forever (R, FT, SR, CNPS 1B.2)
<i>Dudleya cymosa</i> ssp. <i>ovatifolia</i> (Britt.) Moran	Santa Monica Mtns. Live-forever (R, FT, CNPS 1B)
<i>Dudleya cymosa</i> ssp. <i>pumila</i> (Rose) K. Nakai	Pygmy Live-forever (U)
<i>Dudleya farinosa</i> (Lindley) Britt. & Rose	Farinose Live-forever (R)
<i>Dudleya pulverulenta</i> ssp. <i>arizonica</i> (Rose) Moran	Chalky Live-forever (R)
<i>Dudleya verityi</i> N. Nakai	Verity Live-forever (R, FT, CNPS 1B.2)
<u><i>Dudleya virens</i> ssp. <i>insularis</i> (Rose) Moran</u>	<u>Island Green Live-forever (R, CNPS 1B.2)</u>
<u><i>Dudleya virens</i> (Rose) Moran ssp. <i>virens</i></u>	<u>Bright Green Live-forever (R, CNPS 1B.2)</u>
<i>Eastwoodia elegans</i> Brandegees	Yellow Mock Aster (R)
<i>Echinochloa crus-gavonis</i> (Kunth) Shultes	Gulf Barnyard Grass (R)
<i>Echinodorus berteroi</i> (Spreng.) Fassett	Bur Head (R)
<i>Eclipta prostrata</i> (L.) L.	False Daisy (R)
<i>Ehrendorferia ochroleuca</i> (Engelm.) Fukuhara	White Eardrops (R)
<i>Elatine brachysperma</i> Gray	Slender Waterwort (R)
<i>Elatine californica</i> Gray	California Waterwort (R)
<i>Eleocharis acicularis</i> var. <i>gracilenscens</i> Svenson	Graceful Spikerush (R)
<i>Eleocharis bella</i> (Piper) Svenson	Bella Spikerush (R)
<i>Eleocharis bernardina</i> Munz & Johnston	Few-flowered Club-rush (R)
<u><i>Eleocharis erythropoda</i> Steud.</u>	<u>Bald Spikerush (R)</u>
<i>Eleocharis montevidensis</i> Kunth	Sand Spikerush (R)
<i>Eleocharis quinqueflora</i> (Hartmann) O. Schwarz	Few-flowered Spikerush (R)
<i>Eleocharis rostellata</i> (Torrey) Torrey	Beaked Spikerush (R)
<i>Eleocharis suksdorfiana</i> Beauv.	Suksdorf's Spikerush (R)
<i>Elodea canadensis</i> Rich.	Common Waterweed (R)
<i>Elymus glaucus</i> ssp. <i>jepsonii</i> (Burt Davy) Gould	Jepson Blue or Woodland Wildrye (R)
<i>Elymus xgouldii</i> J.P. Sm. & Columbus	Gould's Wildrye (R)
<i>Elymus xhanseni</i> Scribn.	Hansen's Wildrye (R)
<i>Elymus stebbinsi</i> (Scribner & J.G. Smith) Gould	Wheatgrass (R)
<i>Elymus trachycaulus</i> ssp. <i>subsecundus</i> (Link) Gould	Slender Wheatgrass (R)
<i>Elymus trachycaulus</i> (Link) Shinn. ssp. <i>trachycaulus</i>	Slender Wheatgrass (R)
<i>Emmenanthe penduliflora</i> var. <i>rosea</i> Brand	Rose Whispering Bells (R)
<i>Encelia actoni</i> Elmer	Acton Brittlebush (U)
<i>Encelia farinosa</i> Torrey & A. Gray	Brittlebush, Incienso (R)
<i>Encelia frutescens</i> (Gray) Gray	Brittlebush, Incienso (R)
<i>Encelia virginiana</i> Nelson	Brittlebush (R)
<i>Enemion occidentale</i> (H. & A.) J.R. Drummond & Hutchinson	Western Meadow-rue (R)
<i>Ephedra californica</i> S. Watson	California Desert Tea, Cañatillo (R)
<i>Ephedra nevadensis</i> S. Watson	Nevada Ephedra or Mormon-tea (R)
<i>Epilobium campestre</i> (Jeps.) Hoch & W.L. Wagner	Smooth Spike-primrose (R)
<i>Epilobium ciliatum</i> ssp. <i>glandulosum</i> (Lehm.) P. Hoch & Raven	Sticky Northern Willow-herb (R)
<i>Epilobium densiflorum</i> (Lindley) P. Hoch & Raven	Dense-flowered Spike-primrose (R)
<i>Epilobium foliosum</i> (T. & G.) Suksd.	Leafy Spike-primrose (R)
<i>Epilobium glaberrimum</i> Barbey ssp. <i>glaberrimum</i>	Waxy Willow-herb (R)
<i>Epilobium minutum</i> Lindley ex Lehm.	Chaparral Willowherb (R)
<i>Epilobium oregonense</i> Hausskn.	Oregon Spike-primrose (R)

**Scientific Name**

*Epilobium torreyi* (S. Watson) P. Hoch & Raven  
*Equisetum arvense* L.  
*Equisetum hyemale* var. *affine* (Engelm.) Calder & R.L. Taylor  
*Equisetum telmateia* ssp. *braunii* (Milde) R.L. Hauke  
*Equisetum Xferrissii* Clute  
*Eragrostis mexicana* var. *virescens* (C. Presl) Koch & E. Sanchez  
*Eragrostis pentinacea* var. *miserrima* (Fourn.) Reeder  
*Eragrostis pectinacea* (Michx.) Nees var. *pectinacea*  
*Eremalche exilis* (A. Gray) E. Greene  
*Eremalche parryi* (E. Greene) E. Greene ssp. *parryi*  
*Eremocarya micrantha* var. *lepida* MacBr.  
*Eremocarya micrantha* (Torrey) E. Greene var. *micrantha*  
*Eriastrum densifolium* (Benth.) Mason ssp. *densifolium*  
*Eriastrum densifolium* ssp. *mohavense* (Craig) H. Mason  
*Eriastrum eremicum* (Jeps.) H. Mason ssp. *eremicum*  
*Eriastrum filifolium* (Nutt.) Wootton & Standl.  
*Eriastrum hooveri* (Jepson) H. Mason  
*Eriastrum pluriflorum* (A.A. Heller) H. Mason  
*Eriastrum sapphirinum* ssp. *dasyanthem* (Brand) H. Mason  
*Ericameria arborescens* (A. Gray) E. Greene  
*Ericameria cooperi* (Gray) H.M. Hall var. *cooperi*  
*Ericameria cuneata* (Gray) McClatchie var. *cuneata*  
*Ericameria cuneata* var. *spathulata* (A. Gray) H.M. Hall  
*Ericameria ericoides* (Less.) Jeps. ssp. *ericoides*  
*Ericameria nauseosa* var. *bernardina* (Hall) Nesom & Baird  
*Ericameria nauseosa* var. *speciosa* (Nutt.) Nesom & Baird  
*Ericameria palmeri* var. *pachylepis* (H.M. Hall) Nesom  
*Ericameria parryi* var. *aspera* (Greene) G.L. Newson & G.I. Baird  
*Ericameria teretifolia* (Durand & Hilg.) Jepson  
*Erigeron breweri* var. *covillei* (Greene) G. Neswom  
*Erigeron glaucus* Ker-Gawler  
*Eriodictyon californicum* (Hooker & Arnott) Torrey  
*Eriodictyon crassifolium* Bentham var. *crassifolium*  
*Eriodictyon traskiae* Eastw.  
*Eriodictyon trichocalyx* A.A. Heller var. *trichocalyx*  
*Eriogonum arborescens* Greene  
*Eriogonum cithariforme* var. *agninum* (E. Greene) Reveal  
*Eriogonum clavatum* Small  
*Eriogonum covilleianum* Eastw.  
*Eriogonum crocatum* Davidson  
*Eriogonum deflexum* var. *baratum* (Elmer) Reveal  
*Eriogonum elegans* Greene  
*Eriogonum gracillimum* S. Watson  
*Eriogonum grande* Greene var. *grande*  
*Eriogonum grande* Greene var. *rubescens* Munz  
*Eriogonum grande* Greene var. *timorum* Reveal  
*Eriogonum hirtiflorum* S. Watson  
*Eriogonum hooveri* (Reveal) Reveal  
*Eriogonum inerme* (S. Watson) Jeps.  
*Eriogonum kennedyi* ssp. *alpigenum* (Munz & Johnston) Munz & Johnston  
*Eriogonum kennedyi* var. *austromontanum* Munz & I.M. Johnston  
*Eriogonum latifolium* Smith  
*Eriogonum molestum* Greene  
*Eriogonum nudum* var. *auriculatum* (Benth.) J.P. Tracy ex Jeps.  
*Eriogonum ordii* S. Watson  
*Eriogonum ovalifolium* Nutt. var. *ovalifolium*

**Common Name**

Brook Spike-primrose (R)  
Common or Field Horsetail (U)  
Common or Giant Scouring Rush (U)  
Giant Horsetail (U)  
Ferris Horsetail (R)  
Orcutt Lovegrass (U)  
Spreading Tufted Lovegrass (R)  
Tufted Lovegrass (U)  
White-flowered Mallow (R)  
Parry Mallow (U)  
Mountain Red-root Eremocarya (R)  
Eremocarya (R)  
Woolly Star (R)  
Mojave Woolly Star (R)  
Woolly Star (R)  
Threadleaf Woolly Star (R)  
Hoover Woolly Star (R, CNPS 4.2)  
Woolly Star (R)  
Shaggy-flowered Sapphire Woolly Star (R)  
Golden-fleece (U)  
Cooper Goldenbush (R)  
Wedgeleaf Goldenbush (U)  
Spatulate-leaved Goldenbush (R)  
Heatherleaf Goldenbush (U)  
San Bernardino Rubber Rabbitbrush (R)  
White-stemmed Rubber Rabbitbrush (R)  
Palmer Goldenbush (U)  
Parry Rabbitbrush (R)  
Round-leaved Rabbitbrush (R)  
Fleabane Daisy (R)  
Seaside Daisy (R)  
California Yerba Santa (R)  
Thickleaf Yerba Santa (U)  
Trask Yerba Santa (R)  
Yerba Santa (U)  
Arborescent Buckwheat (U)  
Santa Ynez Wild Buckwheat (R)  
Hoover's Little Trumpet (U)  
Coville Buckwheat (R)  
Conejo or Saffron Buckwheat (R, Type, SR)  
Flat-crown Buckwheat (R, Type)  
Elegant Buckwheat (U)  
Slender Buckwheat (R)  
Island Buckwheat (U)  
Red Island Buckwheat (U)  
San Nicolas Island Buckwheat (U)  
Hairy-flowered Buckwheat (U)  
Hoover's Little Trumpet (U)  
Unarmed Buckwheat (U)  
Alpine Kennedy Buckwheat (R, CNPS 1B.3)  
Southern Mountain Buckwheat (U, CNPS 1B.2)  
Coast or Seaside Buckwheat, Tibinagua (R)  
Pine Buckwheat (U)  
Big-eared Wild Buckwheat (R)  
Ord Buckwheat (U)  
Cushion Wild Buckwheat (R)

**Scientific Name**

**Common Name**

<i>Eriogonum parvifolium</i> var. <i>paynei</i> (Wolf ex Munz) Reveal	Payne Dune Buckwheat (U, Type)
<i>Eriogonum pusillum</i> T. & G.	Puny Buckwheat (R)
<i>Eriogonum spergulinum</i> var. <i>reddingianum</i> (Jones) J.T. Howell	Redding's Wild Buckwheat (U)
<i>Eriogonum spergulinum</i> A. Gray var. <i>spergulinum</i>	Spurry Wild Buckwheat (R)
<i>Eriogonum thurberi</i> Torrey	Thurber's Wild Buckwheat (R)
<i>Eriogonum umbellatum</i> var. <i>bahiiforme</i> (T. & G.) Jepson	Sulphur-flower Buckwheat (U)
<i>Eriogonum umbellatum</i> var. <i>canifolium</i> Reveal	Sulphur Buckwheat (R)
<i>Eriogonum umbellatum</i> var. <i>furcosum</i> Reveal	Sulphur Buckwheat (R)
<i>Eriogonum umbellatum</i> var. <i>subaridum</i> S. Stokes	Sulphur Buckwheat (R)
<i>Eriogonum vimineum</i> Benth.	Wicker-stem Wild Buckwheat (U)
<i>Eriogonum viridescens</i> A. Heller	Green Buckwheat (U)
<i>Eriogonum wrightii</i> var. <i>membranaceum</i> Jeps.	Sheathed Wright Buckwheat (R)
<i>Eriogonum wrightii</i> var. <i>trachygonum</i> (Torr. ex Benth.) Jeps.	Rough-node Bastardsage (R)
<i>Eriophyllum confertiflorum</i> var. <i>tanacetiflorum</i> (E. Greene) Jepson	Tansy-leaved Woolly Yarrow (R, CNPS 4.3)
<i>Eriophyllum jepsonii</i> Greene	Jepson Woolly Yarrow (R, CNPS 4.3)
<i>Eriophyllum staechadifolium</i> Lagasca	Seaside Woolly Sunflower (R)
<i>Eryngium vaseyi</i> J. Coulter & Rose	Coyote Thistle or Button-celery (R)
<i>Erysimum insulare</i> E. Greene	Island Wallflower (R, CNPS 1B.3)
<i>Erysimum moniliforme</i> Eastwood	Yellow Wallflower (R)
<i>Erysimum suffrutescens</i> (Abrams) Rossbach	Suffrutescent Wallflower (R, CNPS 4.2)
<i>Eschscholzia hypocoides</i> Bentham	Gypsum Poppy (R)
<i>Eschscholzia lemmonii</i> Greene ssp. <i>lemmonii</i>	Lemmon Poppy (R) CNPS List 4
<i>Eschscholzia minutiflora</i> S. Watson	Tiny-flowered Poppy (R)
<i>Eschscholzia ramosa</i> (Greene) Greene	Island Poppy (R)
<i>Euphorbia crenulata</i> Engelm.	Chinese Caps (R)
<i>Euphorbia palmeri</i> S. Watson var. <i>palmeri</i>	Wood Spurge (R)
<i>Euphorbia spathulata</i> Lam.	Spurge (R)
<i>Extriplex californica</i> (Moq.) E.H. Zacharias	California Saltbush (U)
<i>Festuca rubra</i> L.	Red Fescue (R)
<i>Fimbristylis thermalis</i> S. Watson	Hot-Springs Fimbristylis (R)
<i>Forestiera pubescens</i> Nutt.	Desert Olive, Dwarf Swamp Privet (U)
<i>Fraxinus velutina</i> Torrey	Velvet or Arizona Ash (U)
<i>Fritillaria agrestis</i> E. Greene	Stink Bells (R, CNPS 4.2)
<i>Fritillaria biflora</i> Lindley var. <i>biflora</i>	Chocolate Lily, Mission Bells (U)
<i>Fritillaria ojaiensis</i> A. Davidson	Ojai Fritillary (Type, CNPS 1B.2)
<i>Fritillaria pinetorum</i> A. Davidson	Pine Fritillary (R, CNPS 4.3)
<i>Funastrum cynanchoides</i> var. <i>hartwegii</i> (Vail) Krings	Climbing Milkweed (R)
<i>Galium angustifolium</i> ssp. <i>foliosum</i> (Hilend & Howell) Dempster & Stebb.	Channel Islands Bedstraw (R, Type)
<i>Galium angustifolium</i> ssp. <i>gabrielense</i> (Munz & I.M. Johnst.) Dempster & Stebb.	San Antonio Canyon Bedstraw (R, 4.3)
<i>Galium bifolium</i> S. Watson	Low Mountain Bedstraw (R)
<i>Galium californicum</i> Hooker & Arnott ssp. <i>californicum</i>	California Bedstraw (R)
<i>Galium californicum</i> ssp. <i>flaccidum</i> (E. Greene) Dempster & Stebb.	California Bedstraw (R)
<i>Galium cliftonsmithii</i> (Dempster) Dempster & Stebb.	Santa Barbara Bedstraw (R, CNPS 4.3)
<i>Galium trifidum</i> var. <i>pacificum</i> Wiegand	Coastal Bedstraw (R)
<i>Galium triflorum</i> Michaux	Sweet-scented Bedstraw (R)
<i>Gamochaeta ustulata</i> (Nutt.) Holub	Purple Everlasting (R)
<i>Garrya elliptica</i> Lindley	Silk-tassel Bush (R)
<i>Gaura coccinea</i> Pursh	Wild Honeysuckle, Linda Tarde (U)
<i>Gayophytum heterozygum</i> H. Lewis & J. Szwedkowski	Hybrid Gayophytum (R)
<i>Gayophytum humile</i> A.L. Juss.	Low Gayophytum (R)
<i>Gayophytum racemosum</i> T. & G.	Black-foot Gayophytum (R)
<i>Geranium californicum</i> G. Jones & F. Jones	California Geranium (R)
<i>Geranium carolinianum</i> L.	Cranesbill, Carolina Geranium (R)
<i>Geranium viscosissimum</i> Fischer & C. Meyer	Sticky Cranesbill (R)
<i>Gilia achilleifolia</i> Benth. ssp. <i>achilleifolia</i>	California or Yarrow-leaved Gilia (U)
<i>Gilia achilleifolia</i> Benth. ssp. <i>multicaulis</i> (Benth.) V. & A. Grant	Many-stemmed California Gilia (R)

**Scientific Name**

**Common Name**

<i>Gilia aliquanta</i> A. D. Grant & V. E. Grant	Puff-calyx Gilia (R)
<i>Gilia austro-occidentalis</i> (A.D. & V.E. Grant) A.D. & V.E. Grant	Southwestern Gilia (R)
<i>Gilia brecciarum</i> M.E. Jones ssp. <i>brecciarum</i>	Breccia Gilia (U)
<i>Gilia brecciarum</i> ssp. <i>jacens</i> (A. Grant & V. Grant) Day	Purple-flowered Breccia Gilia (R)
<i>Gilia capillaris</i> Kellogg	Miniature or Smooth-leaved Gilia (R)
<i>Gilia interior</i> (Mason & A. Grant) A. Grant	Slender-flowered Gilia (R)
<i>Gilia latiflora</i> ssp. <i>cuyamensis</i> A. & V. Grant	Cuyama Gilia (U, CNPS 4.3)
<i>Gilia latiflora</i> ssp. <i>davyi</i> (Milliken) A. & V. Grant	Davy Broad-flowered Gilia (R)
<i>Gilia latiflora</i> (Gray) Gray ssp. <i>latiflora</i>	Broad-flowered Gilia (R)
<i>Gilia leptantha</i> ssp. <i>pinetorum</i> A. & V. Grant	Gabriel Trumpet (U, CNPS 4.3)
<i>Gilia malior</i> A.G. Day & V.E. Grant	Scrub Gilia (R)
<i>Gilia millefoliata</i> Fisch. & C. A. Mey.	Dark-eyed Gilia (R)
<i>Gilia minor</i> A.D. Grant & V.E. Grant	Little Gilia (U)
<i>Gilia modocensis</i> Eastwood	Modoc Gilia (R)
<i>Gilia nevinii</i> Gray	Nevin Gilia (U)
<i>Gilia ochroleuca</i> ssp. <i>exilis</i> (Gray) A. & V. Grant	Volcanic Gilia (R)
<i>Gilia ochroleuca</i> M.E. Jones ssp. <i>ochroleuca</i>	Volcanic Gilia (R)
<i>Gilia sinuata</i> Benth.	Sinuate Gilia (R)
<i>Gilia tenuiflora</i> Benth. ssp. <i>tenuiflora</i>	Greater Yellowthroat Gilia (R)
<i>Gilia tetrabreccia</i> A. & V. Grant	Mount Piños Gilia (U)
<i>Gilia transmontana</i> (H. Mason & A. Grant) A. & V. Grant	Desert Gilia (U)
<i>Githopsis diffusa</i> A. Gray ssp. <i>diffusa</i>	Southern Bluecup (R)
<i>Grayia spinosa</i> (Hook.) Moq.	Hop-sage (R)
<i>Grindelia camporum</i> E. Greene var. <i>camporum</i>	Great Valley Gumplant (R)
<i>Grindelia hirsutula</i> Hook. & Arn. var. <i>hirsutula</i>	Hirsute Gumplant (U, Type)
<i>Grindelia stricta</i> var. <i>platyphylla</i> (Greene) M.A. Lane	Island Gumplant (R)
<i>Grindelia Xlatifolia</i> Kellogg ssp. <i>latifolia</i>	Coastal Gumplant (R)
<i>Hazardia cana</i> (A. Gray) E. Greene	San Clemente Island Gumplant (R)
<i>Hazardia detonsa</i> (Greene) Greene	Island Goldenbush (U, CNPS 4.3)
<i>Helenium bigelovii</i> Gray	Bigelow Sneezeweed (U)
<i>Helianthemum scoparium</i> Nutt.	Peak Rushrose (U)
<i>Helianthus gracilentus</i> Gray	Wild Mountain or Slender Sunflower (U)
<i>Hesperevax acaulis</i> var. <i>robustior</i> Morefield	Robust Dwarf Evax (R)
<i>Hesperochiron californicus</i> (Benth.) S. Watson	California Hesperochiron (R)
<i>Hesperochiron pumilus</i> (Griseb.) Porter	Hesperochiron (R)
<i>Hesperocnide tenella</i> Torrey	Western Nettle (U)
<i>Hesperoyucca</i> [ <i>Yucca</i> ] <i>whipplei</i> ssp. <i>intermedia</i> A.L. Haines	Intermediate Our Lord's Candle (R)
<i>Hesperoyucca whipplei</i> ssp. <i>percursa</i> (A.L. Haines) J.M. Weber	Our Lord's Candle (R)
<i>Heterocodon rariflorum</i> Nuttall	Western Pearl-flower (R)
<i>Heterotheca subaxillaris</i> ssp. <i>laxifolia</i> (Buckley) Semple	False Goldenaster (R)
<i>Heterotheca sessiliflora</i> ssp. <i>camphorata</i> (Eastw.) Semple	Camphor Goldenaster (R)
<i>Heterotheca sessiliflora</i> (Nuttall) Shinnery ssp. <i>sessiliflora</i>	Beach Goldenaster (R)
<i>Heterotheca villosa</i> (Pursh) Shinnery var. <i>hispida</i> (Hook.) V. Harms	Woolly Goldenaster (R)
<i>Heuchera abramsii</i> Rydb.	Abrams Alumroot (R, CNPS 4.3)
<i>Heuchera caespitosa</i> Eastw.	Urn-flowered Alumroot (R, CNPS 4.3)
<i>Heuchera elegans</i> Abrams	Urn-flowered Alumroot (R)
<i>Heuchera maxima</i> Greene	Island Alumroot (R, CNPS 1B.2)
<i>Hieracium albiflorum</i> Hooker	White-flowered Hawkweed (R)
<i>Hieracium horridum</i> Fries	Shaggy or Woolly Hawkweed (R)
<i>Hoffmannseggia glauca</i> (Ortega) Eifert	Pig-nut, Hog Potato (R)
<i>Hoita orbicularis</i> (Lindley) Rydb.	Round-leaved Hoita (R)
<i>Hollisteria lanata</i> S. Watson	Hollisteria (R)
<i>Holocarpha heermannii</i> (E. Greene) Keck	Heermann Tarplant (U)
<i>Holodiscus discolor</i> (Pursh) Maxim. var. <i>discolor</i>	Oceanspray, Cream Bush (U)
<i>Holodiscus discolor</i> var. <i>macrophyllus</i> (Rydb.) Jeps.	Rock Spiraea (R)
<i>Hordeum brachyantherum</i> Nevski ssp. <i>brachyantherum</i>	Meadow Barley (U)

<u>Scientific Name</u>	<u>Common Name</u>
<i>Hordeum depressum</i> (Scribner & J.G. Smith) Rydb.	Low Barley (R)
<i>Hordeum intercedens</i> Nevski	Vernal Barley (U, CNPS 3.2)
<i>Horkelia cuneata</i> Lindley ssp. <i>cuneata</i>	Wedgeleaf Horkelia (R)
<i>Horkelia cuneata</i> ssp. <i>puberula</i> (Greene) Keck	Fuzzy Horkelia (R, CNPS 1B.1)
<i>Horkelia rydbergii</i> Elmer	Rydberg Horkelia (U)
<i>Hosackia crassifolia</i> Benth. var. <i>crassifolia</i>	Broad-leaved Hosackia (U)
<i>Hosackia oblongifolia</i> var. <i>cuprea</i> (Greene) Brouillet	Stream Trefoil (R)
<i>Hosackia oblongifolia</i> Benth. var. <i>oblongifolia</i>	Narrow-leaved Hosackia, Stream Trefoil (U)
<i>Hosackia stipularis</i> Benth. var. <i>stipularis</i>	Balsam Lotus (R)
<i>Hulsea heterochroma</i> Gray	Red-rayed Hulsea (R)
<i>Hulsea vestita</i> ssp. <i>gabrielensis</i> Wilken	San Gabriel Hulsea (R, CNPS 4.3)
<i>Hulsea vestita</i> ssp. <i>parryi</i> (A. Gray) Wilken	Parry's Sunflower (R, CNPS 4.3)
<i>Hutchinsia procumbens</i> (L.) Desv.	Desert Hutchinsia (U)
<i>Hydrocotyle verticillata</i> Thunb.	Marsh Pennywort (R)
<i>Hypericum formosum</i> var. <i>scouleri</i> (Hook.) J. Coulter	St. John's Wort (R)
<i>Imperata brevifolia</i> Vasey	Satintail (R, CNPS 2.1)
<i>Iris missouriensis</i> Nuttall	Western Blue Flag [Iris] (U)
<i>Isocoma acradenia</i> var. <i>bracteosa</i> (E. Greene) G.L. Nesom	Desert Goldenbush (R)
<i>Isoëtes howellii</i> Engelm. var. <i>howellii</i>	Howell Quillwort (R)
<i>Isoëtes howellii</i> var. <i>minima</i> (A.A. Eaton) N.E. Pfeiffer	Small Howell Quillwort (R)
<i>Isoëtes nuttallii</i> A. Braun	Nuttall Quillwort (R)
<i>Isolepis cernua</i> (Vahl) Roemer & Schultes var. <i>cernua</i>	Low Clubrush (U)
<i>Iva hayesiana</i> A. Gray	San Diego Marsh-elder (R)
<i>Ivesia santolinoides</i> A. Gray	Mousetail Ivesia (R)
<i>Ivesia saxosa</i> (Greene) B. Ertter	Five-finger Silverweed (R)
<i>Jaumea carnosa</i> (Less.) Gray	Fleshy Jaumea (U)
<i>Jensia yosemitana</i> (Parry ex A. Gray) B.G. Baldwin	Yosemite Tarplant (R)
<i>Jepsonia malvifolia</i> (Greene) Small	Island Jepsonia (R, CNPS 4.2)
<i>Johnstonella micromeres</i> (A. Gray) Hasenstab & M.G. Simpson	Minute-flowered Forget (U)
<i>Juglans californica</i> S. Watson var. <i>californica</i>	Southern California Black Walnut (CNPS 4.2)
<i>Juncus acutus</i> ssp. <i>leopoldii</i> (Parl.) Snogerup	Spiny Rush (U, CNPS 4.2)
<i>Juncus arcticus</i> ssp. <i>vallicola</i> (Rydb.) Lint	Valley Baltic Rush (R)
<i>Juncus balticus</i> Willd. var. <i>ater</i> (Rydb.) Snogerup	Rocky Mountain Rush (R)
<i>Juncus breweri</i> Engelm.	Brewer Rush (R)
<i>Juncus bufonius</i> var. <i>congestus</i> Wahlenb.	Congested Rush (R)
<i>Juncus bufonius</i> var. <i>occidentalis</i> F.J. Hermann	Western Toad Rush (R)
<i>Juncus confusus</i> Cov.	Colorado Rush (R)
<i>Juncus effusus</i> ssp. <i>austrorcalifornicus</i> H.L. Lint ex Zita	Pacific Rush (U)
<i>Juncus ensifolius</i> Wikström var. <i>ensifolius</i>	Swordleaf or Three-stamen Rush (R)
<i>Juncus lescurii</i> Bolander	Salt Rush (R)
<i>Juncus macrandrus</i> Cov.	Long-anthered Rush (R)
<i>Juncus nevadensis</i> S. Watson var. <i>nevadensis</i>	Sierra Rush (R)
<i>Juncus occidentalis</i> (Coville) Wiegand	Western Rush (R)
<i>Juncus oxymiris</i> Engelm.	Iris-leaved or Pointed Rush (R)
<i>Juncus patens</i> E. Meyer	Spreading Rush (R)
<i>Juncus phaeocephalus</i> var. <i>paniculatus</i> Engelm.	Brown-fruited Rush (R)
<i>Juncus phaeocephalus</i> Engelm. var. <i>phaeocephalus</i>	Brown-fruited Rush (R)
<i>Juncus rugulosus</i> Engelm.	Wrinkled Rush (U)
<i>Juncus tiehmii</i> Ertter	Tiehm's Rush (R)
<i>Juncus torreyi</i> Coville	Torrey Rush (R)
<i>Juniperus occidentalis</i> Hook.	Western Juniper (R)
<i>Krascheninnikovia lanata</i> (Pursh) A.D.J. Meeuse & Smit	Winter Fat (R)
<i>Laënnecia coulteri</i> (A. Gray) G.L. Nesom	Coast Horseweed (U)
<i>Lastarriaea coriacea</i> (Goodman) Hoover	Lastarriaea (R)
<i>Lasthenia coronaria</i> (Nutt.) Ornduff	Crown-pappus Goldfields (R)
<i>Lasthenia ferrisiae</i> Ornduff	Ferris Goldfields (R, CNPS 4.2)

**Scientific Name**

*Lasthenia glabrata* ssp. *coulteri* (Gray) Ornduff  
*Lathyrus vestitus* ssp. *alefeldii* (T.G. White) Broich  
*Lathyrus vestitus* ssp. *bolanderi* (S. Watson) C. Hitchc.  
*Lathyrus vestitus* ssp. *laevicarpus* Broich  
*Lavatera assurgentiflora* Kellogg ssp. *assurgentiflora*  
*Layia glandulosa* ssp. *lutea* Keck  
*Layia glandulosa* ssp. *rosea* Gray  
*Layia heterotricha* (DC.) Hook. & Arn.  
*Layia leucopappa* D.D. Keck  
*Layia pentachaeata* ssp. *albida* Keck  
*Layia platyglossa* (Fischer & C. Meyer) A. Gray  
*Lemna aequinoctialis* Welw.  
*Lemna gibba* L.  
*Lemna minor* L.  
*Lemna minuta* Kunth  
*Lemna turionifera* Landolt  
*Lemna valdiviana* Philipp  
*Lepechinia calycina* (Bentham) Epling  
*Lepechinia fragrans* (E. Greene) Epling  
*Lepechinia rossii* S. Boyd & O. Mistretta  
*Lepidium dictyotum* A. Gray  
*Lepidium lasiocarpum* Nutt. var. *lasiocarpum*  
*Lepidium oblongum* Small  


---

*Lepidium strictum* (S. Watson) Rattan  
*Lepidium virginicum* var. *menziesii* (DC.) Thellung  
*Lepidium virginicum* var. *pubescens* (Greene) Thell.  
*Leptodactylon pungens* ssp. *hallii* (Parish) H. Mason  
*Leptodactylon pungens* ssp. *pulchriflorum* (Brand) H. Mason  
*Leptosiphon androsaceus* Bentham  
*Leptosiphon bicolor* Nuttall  
*Leptosiphon breviculus* (A. Gray) J.M. Porter & L.A. Johnson  
*Leptosiphon ciliatus* (Benth.) Jepson  
*Leptosiphon liniflorus* (Bentham) J.M. Porter & L.A. Johnson  
*Leptosiphon nudatus* (E. Greene) J.M. Porter & L.A. Johnson  
*Leptosiphon pygmaeus* ssp. *continentalis* (Raven) Porter & Johnson  
*Leptosyne californica* Nuttall  
*Leptosyne calliopsidea* (DC.) A.Gray  
*Lessingia glandulifera* var. *peirsonii* (J.T. Howell) Markos  
*Lessingia leptoclada* A. Gray  
*Lessingia pectinata* var. *tenuipes* (J.T. Howell) Markos  
*Lessingia tenuis* (Gray) Cov.  
*Lewisia nevadensis* (A. Gray) Robinson  
*Lewisia pygmaea* (A. Gray) Robinson  
*Lewisia rediviva* ssp. *minor* (Rydb.) Munz  
*Leymus cinereus* A. Löve  
*Leymus Xhansanii* Scribner  
*Lilium humboldtii* ssp. *ocellatum* (Kellogg) Thorne  
*Lilium pardalinum* Kellogg ssp. *pardalinum*  
*Limonium californicum* (Boiss.) A.A. Heller  
*Limosella acaulis* Sesse & Mocino  
*Linanthus bigelovii* (Gray) Greene  
*Linanthus dianthiflorus* (Benth.) Greene  
*Linanthus parryae* (Gray) Greene  
*Linaria canadensis* (L.) Dum.-Cours. var. *canadensis*  
*Linaria canadensis* (L.) Dum.-Cours. var. *texana* (Scheele) Pennell  
*Linum lewisii* Pursh

**Common Name**

Rayless Goldfields (R, CNPS 1B.1)  
Alefeld's Pacific Peavine (R)  
White-petaled Peavine (R)  
Pacific Peavine (U, Type)  
Malva Rose (R)  
Yellow Layia (U)  
Rose Layia (R, Type)  
Pale-yellow Layia (R, CNPS 1B.1)  
Comanche Point Layia (R, CNPS 1B.1)  
White Tidy Tips (R)  
Tidy Tips (U)  
Lesser Duckweed (R)  
Gibbose Duckweed (R)  
Duckweed (R)  
Tiny Duckweed (U)  
Duckweed (R)  
Big Duckweed (U)  
Pitcher Sage (R)  
Fragrant Pitcher Sage (R, CNPS 4.2)  
Ross' Pitcher Sage (R, CNPS 1B.2)  
Veiny Peppergrass (R)  
Hairy-pod Peppergrass (U)  
Oblong Peppergrass (U)  
Prostrate Peppergrass (R)  
Hairy Poorman's Peppergrass (U, CNPS 1B.2)  
Hairy Poorman's Peppergrass (R)  
Granite Prickly Phlox (R)  
Granite Prickly Phlox (U)  
Baby Tears (R)  
Bicolored Linanthus (R)  
Short-stemmed Linanthus (R)  
Whisker Brush (R)  
Narrow Flaxflower (U)  
Tehachapi Linanthus or Flaxflower (R)  
Continental Pygmy Linanthus (R)  
California Coreopsis (R)  
Leafy-stemmed Coreopsis (R)  
Peirson's Lessingia (R)  
Sierra Lessingia (R)  
Sticky Lessingia (R)  
Spring Lessingia (U, Type, CNPS 4.3)  
Sierra Nevada Bitterroot (R)  
Pygmy Bitterroot (R)  
Small Bitterroot (U)  
Cespitose Wildrye (R)  
Hansen's Wildrye (R)  
Ocellated Humboldt Lily (U, CNPS 4.2)  
Leopard Lily (R)  
Marsh Rosemary (R)  
Tufted Mudwort (R)  
Bigelow Linanthus (R)  
Ground Pink (U)  
Parry Linanthus (R)  
Toadflax (R)  
Toadflax (U)  
Western Blue Flax (U)



**Scientific Name**

**Common Name**

<i>Lipocarpa micrantha</i> (M. Vahl.) G.C. Tucker	Tiny Lipocarpa (R)
<i>Lithophragma bolanderi</i> Gray	Bolander Star (R)
<i>Lithophragma cymbalaria</i> T. & G.	Mission Star (U)
<i>Lithophragma glabrum</i> Nuttall	Smooth Star (R)
<i>Lithophragma heterophyllum</i> (Hook. & Arn.) T. & G.	Hill Star (R)
<i>Lithophragma parviflorum</i> (Hook.) T. & G. var. <i>parviflorum</i>	Prairie Star (R)
<i>Lobelia dunnii</i> var. <i>serrata</i> (Gray) McVaugh	Rothrock (Ojai) Lobelia (Type Locality only)
<i>Loeflingia squarrosa</i> Nuttall var. <i>squarrosa</i>	California Loeflingia (R)
<i>Loeseliastrum schottii</i> S. Timbrook	Schott Loeseliastrum (R)
<i>Lomatium californicum</i> (T. & G.) Mathias & Constance	California Lomatium (R)
<i>Lomatium caruifolium</i> (H.& A.) J.M. Coult. & Rose var. <i>caruifolium</i>	Alkali Desertparsley (R)
<i>Lomatium dissectum</i> var. <i>multifidum</i> (T.& G.) Mathias & Constance	Carrotleaf Biscuitroot (R)
<u><i>Lomatium insulare</i> (Eastw.) Munz</u>	<u>San Nicolas Island Lomatium</u> (R)
<i>Lomatium lucidum</i> (T. & G.) Jeps.	Shiny Lomatium (R)
<i>Lomatium macrocarpum</i> (T. & G.) J. Coulter & Rose	Large-fruited Lomatium (R)
<i>Lomatium mohavense</i> (Coult. & Rose) Coult. & Rose ssp. <i>mohavense</i>	Desert-parsley (U)
<i>Lomatium nevadense</i> var. <i>parishii</i> (J.M. Coult.) Jeps.	Parish's Lomatium (R)
<i>Lomatium parvifolium</i> (Hook. & Arn.) Jeps.	Small-leaved Lomatium (R)
<i>Lomatium utriculatum</i> (T. & G.) Coulter & Rose	Foothill Lomatium (U)
<i>Lonicera interrupta</i> Benth.	Chaparral Honeysuckle (U)
<i>Lonicera subspicata</i> Hooker & Arnott var. <i>subspicata</i>	Santa Ynez Mountains Honeysuckle (R)
<i>Ludwigia palustris</i> (L.) Elliot	Streamside Water Primrose (R)
<i>Lupinus adsurgens</i> E. Drew var. <i>adsurgens</i>	Silky Lupine (R)
<i>Lupinus adsurgens</i> var. <i>undulatus</i> C.P. Smith	Wavyleaf Silky Lupine (R)
<i>Lupinus agardhianus</i> Heller	Lupine (R)
<i>Lupinus albicaulis</i> Hooker	Whitestem Lupine (R)
<u><i>Lupinus albifrons</i> var. <i>douglasii</i> (Agardh) C.P. Smith</u>	<u>Island Silver Bush Lupine</u> (R)
<i>Lupinus andersonii</i> S. Watson	Anderson Lupine (U)
<i>Lupinus arboreus</i> Sims var. <i>arboreus</i>	Yellow Bush Lupine (U)
<i>Lupinus benthamii</i> A. Heller var. <i>benthamii</i>	Spider Lupine (R)
<i>Lupinus breweri</i> Gray var. <i>breweri</i>	Brewer Mat Lupine (U)
<i>Lupinus breweri</i> var. <i>bryoides</i> C.P. Smith	Alpine Brewer Lupine (U)
<u><i>Lupinus chamissonis</i> Eschsch.</u>	<u>Coastal Bush Lupine</u> (R)
<i>Lupinus concinnus</i> spp. <i>optatus</i> D. Dunn	Bajada Lupine (R)
<i>Lupinus concinnus</i> spp. <i>orcutti</i> (S. Watson) D. Dunn	Orcutt Bajada Lupine (R)
<i>Lupinus elatus</i> I.M. Johnston	Silky Lupine (CNPS 4.3)
<i>Lupinus excubitus</i> var. <i>austromontanus</i> (A.A. Heller) C.P. Smith	Southern Mountain Bush Lupine (U)
<i>Lupinus excubitus</i> var. <i>johnstonii</i> C.P. Smith	Johnston Bush Lupine (R)
<i>Lupinus formosus</i> var. <i>robustus</i> C.P. Smith	Summer Bush Lupine (R)
<i>Lupinus latifolius</i> J. Agardh var. <i>latifolius</i>	Broad-leaved Lupine (R)
<i>Lupinus latifolius</i> var. <i>parishii</i> C.P. Smith	Parish Broad-leaved Lupine (U)
<i>Lupinus lepidus</i> var. <i>confertus</i> (Kellogg) C.P. Smith	Prairie Lupine (U)
<i>Lupinus luteolus</i> Kellogg	Butter Lupine (U)
<i>Lupinus microcarpus</i> var. <i>densiflorus</i> (Benth) Jeps.	Densely Red-flowered Lupine (R)
<i>Lupinus microcarpus</i> var. <i>horizontalis</i> (A.A. Heller) Jeps.	Prostrate Red-flowered Lupine (U, Type)
<i>Lupinus nanus</i> Benth.	Small Lupine (U)
<i>Lupinus paynei</i> Davidson	Payne's Bush Lupine (R, Type)
<i>Lupinus polyphyllus</i> var. <i>burkei</i> (S. Watson) C. Hitchc.	Large-leaved Lupine (R)
<i>Lycium andersonii</i> Gray	Anderson Desert-thorn (R)
<u><i>Lycium californicum</i> Nuttall ex Gray</u>	<u>California Desert-thorn</u> (R)
<u><i>Lycium verrucosum</i> Eastwood</u>	<u>San Nicolas Island Desert-thorn</u> (R, Type)
<i>Madia elegans</i> ssp. <i>densifolia</i> (E. Greene) Keck	Dense-flowered Tarplant or Madia (R)
<i>Madia elegans</i> ssp. <i>vernalis</i> Keck	Vernal Tarplant or Madia (R)
<i>Madia elegans</i> ssp. <i>wheeleri</i> (Gray) Keck	Wheeler Tarplant or Madia (U)
<i>Madia exigua</i> (Smith) A. Gray	Small or Threadstem Tarplant or Madia (R)
<i>Madia sativa</i> Molina	Coast Tarplant (R)

<u>Scientific Name</u>	<u>Common Name</u>
<i>Maianthemum racemosum</i> ssp. <i>amplexicaule</i> (Nutt.) LaFrankie	False Solomon's Seal, Wild Lily of the Valley (R)
<i>Maianthemum stellatum</i> (L.) Link	False Solomon's Seal, Wild Lily of the Valley (R)
<i>Malacothamnus fasciculatus</i> var. <i>laxiflorus</i> (Gray) Kearney	Lax-flowered Bushmallow (R)
<i>Malacothamnus marrubioides</i> (D. & H.) Greene	Pink-flowered Bush[Globe]mallow (U)
<i>Malacothamnus orbiculatus</i> (E. Greene) E. Greene	Roundleaf Bushmallow (U)
<i>Malacothamnus nuttallii</i> Abrams	Nuttall Bushmallow (Type)
<i>Malacothrix clevelandii</i> Gray	Cleveland Cliff-aster (U)
<i>Malacothrix coulteri</i> Gray	Snake-head (R)
<i>Malacothrix foliosa</i> Gray ssp. <i>foliosa</i>	Leafy Cliff-aster (R, CNPS 4.2)
<i>Malacothrix foliosa</i> ssp. <i>crispifolia</i> W.S. Davis	Leafy Cliff-aster (R, CNPS 1B.2)
<i>Malacothrix foliosa</i> ssp. <i>polycephala</i> W.S. David	Many-headed Leafy Cliff-aster (R)
<i>Malacothrix glabrata</i> A. Gray	Desert Dandelion (R)
<i>Malacothrix incana</i> (Nuttall) Torrey & A. Gray var. <i>incana</i>	Dunedelion (U, CNPS 4.3)
<i>Malacothrix junakii</i> W.S. Davis	Junak Dandelion (R, Type, CNPS 1B.1)
<i>Malacothrix phaeocarpa</i> W.S. Davis	Brown-fruited Dandelion (R, CNPS 4.3)
<i>Malacothrix saxatilis</i> var. <i>altissima</i> (Greene) Ferris	Cliff-aster (R)
<i>Malacothrix saxatilis</i> var. <i>commutata</i> Ferris	Cliff-aster (U)
<i>Malacothrix saxatilis</i> var. <i>implicata</i> (Eastw.) Hall	Implicated Cliff-aster (U, Type)
<i>Malacothrix saxatilis</i> (Nuttall) T. & G. var. <i>saxatilis</i>	Cliff-aster (CNPS 4.2)
<i>Malacothrix similis</i> Davis & Raven	Mexican Cliff-aster (R, CNPS 1A)
<i>Malacothrix squalida</i> Greene	Island Dandelion (R, CNPS 1B.1)
<i>Marah macrocarpus</i> var. <i>major</i> (Dunn) Stocking	Island Man-root (R)
<i>Marsilea vestita</i> Hooker & Greville ssp. <i>vestita</i>	Hairy Pepperwort, Clover Fern (R)
<i>Meconella denticulata</i> E. Greene	Tiny Poppy (R)
<i>Melica californica</i> Scribner var. <i>californica</i>	California Melic Grass (U)
<i>Melica frutescens</i> Scribner	Melic Grass (R)
<i>Melica stricta</i> Bolander var. <i>albicaulis</i>	Whitestem Rock Melic Grass (R)
<i>Mentha arvensis</i> L.	Field Mint (R)
<i>Mentzelia affinis</i> Greene	Stickleaf (R)
<i>Mentzelia albicaulis</i> (Hook.) T. & G.	Whitestem Stickleaf (R)
<i>Mentzelia congesta</i> (Nuttall) T. & G. var. <i>congesta</i>	Congested Stickleaf (U)
<i>Mentzelia congesta</i> var. <i> davidsoniana</i> (Abrams) J.F. Macbr.	Ventana Stickleaf (R)
<i>Mentzelia dispersa</i> S. Watson	Scattered Stickleaf (R)
<i>Mentzelia gracilentia</i> T. & G.	Slender Stickleaf (R)
<i>Mentzelia micrantha</i> (Hook. & Arnott) T. & G.	Tiny-flowered Stickleaf (U)
<i>Mentzelia pectinata</i> Kellogg	Stickleaf (R)
<i>Mentzelia veatchiana</i> Kellogg	Veatch Stickleaf (R)
<i>Micranthes californica</i> (Greene) Small	California Saxifrage (R)
<i>Microseris douglasii</i> (DC.) Schultz-Bip. ssp. <i>douglasii</i>	Douglas Microseris (R)
<i>Microseris douglasii</i> ssp. <i>tenella</i> (A. Gray) Chambers	Slender Douglas Microseris (R)
<i>Microseris elegans</i> A. Gray	Elegant Microseris (R)
<i>Mimulus androsaceus</i> Greene	Naked Sepal Monkeyflower (U)
<i>Mimulus aurantiacus</i> var. <i>parviflorus</i> (Greene) D.M. Thompson	Bush Monkeyflower (R)
<i>Mimulus bigelovii</i> (Gray) Gray var. <i>bigelovii</i>	Bigelow Monkeyflower (R)
<i>Mimulus bolanderi</i> Gray	Bolander Monkeyflower (R)
<i>Mimulus breweri</i> (E. Greene) Cov.	Brewer Monkeyflower (R)
<i>Mimulus congonii</i> Robinson	Congdon Monkeyflower (R)
<i>Mimulus constrictus</i> (A.L. Grant) Pennell	Narrow-throated Monkeyflower (U)
<i>Mimulus constrictus</i> (A.L. Grant) Pennell X <i>Mimulus johnstonii</i> A.L. Grant	Hybrid Narrow-throated Monkeyflower (U)
<i>Mimulus flemingii</i> Munz	Island Bush Monkeyflower (R, CNPS 4.3)
<i>Mimulus floribundus</i> Lindley	Floriferous Monkeyflower (U)
<i>Mimulus fremontii</i> (Benth.) Gray var. <i>fremontii</i>	Fremont Monkeyflower (U)
<i>Mimulus longiflorus</i> var. <i>rutilus</i> A. Grant	Red Sticky Bush Monkeyflower (R)
<i>Mimulus moschatus</i> var. <i>longiflorus</i> A. Gray	Musk Monkeyflower (R)
<i>Mimulus parishii</i> E. Greene	Parish's Monkeyflower (R)
<i>Mimulus primuloides</i> Benth. var. <i>primuloides</i>	Primrose Monkeyflower (U)

**Scientific Name**

*Mimulus puniceus* Nuttall  
*Mimulus rattanii* Gray  
*Mimulus rubellus* Gray  
*Mimulus suksdorfii* Gray  
*Mimulus tilingii* Regel  
*Minuartia pusilla* (S. Watson) Mattf.  
*Mirabilis laevis* var. *villosa* (Kellogg) Spellenberg  
*Mirabilis multiflora* var. *pubescens* S. Watson  
*Monanthochloe littoralis* Engelm.  
*Monardella australis* Abrams  
*Monardella hypoleuca* Gray ssp. *hypoleuca*  
*Monardella linoidea* A. Gray ssp. *linoidea*  
*Monardella linoidea* ssp. *oblonga* (Greene) Abrams  
*Monardella linoidea* ssp. *stricta* (Parish) Epling  
*Monardella sinuata* A.C. Sanders & M.A. Elvin ssp. *sinuata*  
*Monardella undulata* Benth. ssp. *undulata*  
*Monolepis nuttalliana* (Schultes) E. Greene  
*Monolopia lanceolata* Nuttall  
*Monolopia major* DC.  
*Montia chamissoi* (Ledeb. Ex Spreng.) Greene  
*Mucronea californica* Benth. var. *californica*  
*Mucronea perfoliata* (Gray) A.A. Heller var. *perfoliata*  
*Muhlenbergia andina* (Nuttall) A. Hitchc.  
*Muhlenbergia asperifolia* (Nees & Meyen) Parodi  
*Muhlenbergia filiformis* (Thurb. ex S. Watson) Rydb. var. *filiformis*  
*Muhlenbergia richardsonis* (Trin.) Rydberg  
*Muhlenbergia utilis* (Torrey) A. Hitchc.  
*Muilla maritima* (Torrey) S. Watson  
*Myosurus apetalus* var. *montanus* Whittmore  
*Myosurus minimus* L.  
*Myrica californica* Chamisso  
*Myriophyllum hippuroides* Torrey & A. Gray  
*Najas guadalupensis* (Sprengel) Magnus  
*Najas marina* L.  
*Navarretia atractyloides* (Benth.) Hook. & Arn.  
*Navarretia hamata* E. Greene ssp. *hamata*  
*Navarretia mellita* E. Greene  
*Navarretia ojaiensis* Elvin, J.M. Porter & L.A. Johnson  
*Navarretia peninsularis* Greene  
*Navarretia squarrosa* (Eschsch.) Hook. & Arn.  
*Nemacladus californicus* (A. Gray) Morin  
*Nemacladus capillaris* Greene  
*Nemacladus glandulerus* var. *occidentalis* McVaugh  
*Nemacladus gracilis* Eastw.  
*Nemacladus orientalis* (McVaugh) Morin  
*Nemacladus ramosissimus* Nuttall  
*Nemacladus secundiflorus* var. *robbinsii* Morin  
*Nemacladus sigmoideus* G.T. Robbins  
*Nemophila menziesii* var. *integrifolia* Parish  
*Nemophila parviflora* Douglas ex Bentham var. *parviflora*  
*Nemophila pulchella* var. *fremontii* (A.D.E. Elmer) Constance  
*Nicotiana attenuata* Torrey  
*Nicotiana clevelandii* A. Gray  
*Nicotiana quadrivalis* Pursh var. *quadrivalis*  
*Nicotiana quadrivalis* Pursh var. *wallacei* (Gray) Mansf.  
*Nolina cismontana* Dice

**Common Name**

Red Bush Monkeyflower (R)  
Rattan's Monkeyflower (R)  
Little Redstem Monkeyflower (R)  
Suksdorf Monkeyflower (R)  
Creeping Monkeyflower (R)  
Sandwort (R)  
Woolly Wishbone-bush (R)  
Froebel Four O'Clock (R)  
Shoregrass (R)  
Southern Coyote Mint (R)  
White-veined Coyote Mint (U)  
Flax-leaved Horsemint (R)  
Flax-leaved Horsemint (CNPS 1B.3)  
Flax-leaved Horsemint (R)  
Sinuate Monardella (R)  
Curly-leaved Horsemint (R)  
Nuttall Monolepis, Poverty Weed (R)  
Lanceleaf Hilltop Daisy (R)  
Cupped Daisy (R)  
Toad-Lily (R)  
California Spineflower (R, CNPS 4.2)  
Perfoliate Spineflower (R)  
Foxtail Muhly (R)  
Scratchgrass (U)  
Pull-Up Muhly (R)  
Mat Muhly (R)  
Aparejo Grass (R)  
Common Muilla (U)  
Petaless Mousetails (R)  
Common Mousetails (R)  
California Wax-Myrtle, Pacific Bayberry (R)  
Western Milfoil (R)  
Common Water-nymph, Southern Naiad (R)  
Spiny Niad (R)  
Hollyleaf Skunkweed (U)  
Skunk Navarretia (R)  
Sticky Navarretia (R)  
Ojai Navarretia (U, CNPS 1B.1)  
Southern California Navarretia (R)  
Downy Navarretia (R)  
Parishella (R)  
Common Nemacladus (R)  
Western Sticky Nemacladus (R)  
Slender Nemacladus (R)  
Western Sticky Nemacladus (R)  
Nuttall's Nemacladus (R)  
Robbins' Nemacladus (R, CNPS 1B.2)  
Thread Stem (R)  
Baby Blue-eyes (R)  
Smallflower Nemophila (R)  
Fremont Baby Blue-eyes (R)  
Coyote Tobacco (U)  
Cleveland Indian Tobacco (R)  
Indian Tobacco (R)  
Wallace's Indian Tobacco (R)  
Chaparral Bear-grass (U, CNPS 1B.2)

**Scientific Name**

**Common Name**

<i>Notholeana californica</i> D.C. Eaton ssp. <i>californica</i>	California Cloak Fern (R)
<i>Notholithocarpus densiflorus</i> (Hook. & Arn.) Manos, C.H. Cannon, &	S. Oh var. <i>densiflorus</i> Tanbark Oak (R)
<i>Oenothera deltoides</i> ssp. <i>cognata</i> (Jepson) Klein	Birdcage Evening-primrose, Devil's Lantern (R)
<i>Oenothera elata</i> ssp. <i>hookeri</i> (Torrey & A. Gray) W. Dietr.	Hooker Coast Evening Primrose (R)
<i>Oenothera longissima</i> ssp. <i>clutei</i> (Nelson) Munz	Evening Primrose (R)
<i>Oligomeris linifolia</i> (M. Vahl) J.F. Macbr.	Narrowleaf Oligomeris (U)
<i>Opuntia basilaris</i> Engelm. & J. Bigelow var. <i>basilaris</i>	Beavertail Cactus (R)
<i>Opuntia littoralis</i> (Engelm.) Cockerell <i>XO. oricola</i> Philbr.	Coastal-Round-pad Prickly Pear Hybrid (R)
<i>Opuntia Xoccidentalis</i> Engelm. & Bigelow	Western Pricklypear Cactus (R)
<i>Opuntia oricola</i> Philbr.	Round-pad Prickly Pear (U)
<i>Opuntia Xvaseyi</i> (J. Coulter) Britton & Rose ( <i>O. littoralis</i> X <i>phaeacantha</i> )	Mesa Prickly Pear (R)
<i>Orcuttia californica</i> Vasey	California Orcutt Grass (R, FE, SE, CNPS 1B.1)
<i>Orobanche californica</i> ssp. <i>feudgei</i> (Munz) Heckard	California Sagebrush Broom-rape (R)
<i>Orobanche californica</i> ssp. <i>grandis</i> Heckard	Coastal California Broom-rape (R)
<i>Orobanche californica</i> ssp. <i>jepsonii</i> (Munz) Heckard	Jepson Sagebrush Broom-rape (R)
<i>Orobanche parishii</i> ssp. <i>brachyloba</i> Heckard	Short-lobed Broom-rape (R, CNPS 4.2)
<i>Orobanche parishii</i> (Jeps.) Heckard ssp. <i>parishii</i>	Parish Broom-rape (U)
<i>Orobanche uniflora</i> L.	Naked Broomrape (R)
<i>Orobanche valida</i> Jeps. ssp. <i>valida</i>	Rock Creek Broom-rape (R, CNPS 1B.2)
<i>Orobanche vallicola</i> (Jepson) Heckard	Hillside Broomrape (R)
<i>Osmorhiza brachypoda</i> Torrey	Sweet Cicely (U)
<i>Osmorhiza chilensis</i> H. & A.	Mountain Sweetroot (R)
<i>Oxalis albicans</i> Kunth ssp. <i>albicans</i>	Radishroot Woodsorrel (R)
<i>Oxalis albicans</i> ssp. <i>californica</i> (Abrams) G. Eiten	California White Wood Sorrel (R)
<i>Oxalis albicans</i> ssp. <i>pilosa</i> (Nuttall) G. Eiten	Hairy White Wood Sorrel (U)
<i>Oxytheca perfoliata</i> T. & G.	Perfoliate Oxytheca (R)
<i>Oxytheca trilobata</i> A. Gray	Three-lobed Spineflower (R)
<i>Packera breweri</i> (Burt Davy) W.A. Weber & Löve	Brewer Butterweed or Groundsel (U)
<i>Panicum capillare</i> ssp. <i>hillmanii</i> (Chase) Freckmann & Lelong	Hillman Witchgrass (U)
<i>Papaver californicum</i> Gray	Wind or Fire Poppy (R)
<i>Parietaria hespera</i> var. <i>californica</i> B.D. Hinton	California Pellitory (U)
<i>Parietaria pensylvanica</i> Muhlenberg ex Willdenow	Pennsylvania Pellitory (R)
<i>Parthenocissus vitaea</i> (Knerr) Hitchc.	Woodbine (R)
<i>Paspalum distichum</i> L.	Joint Dallis Grass or Knotgrass (R)
<i>Pectocarya heterocarpa</i> I.M. Johnston	Two-faced Pectocarya (R)
<i>Pedicularis densiflora</i> Hook.	Indian Warrior (R)
<i>Pedicularis semibarbata</i> Gray	Pine-woods Lousewort (U)
<i>Pediomelum castoreum</i> (S. Watson) Rydb.	Desert Indian Breadroot (R)
<i>Pellaea mucronata</i> var. <i>californica</i> (Lemmon) Munz & I.M. Johnston	California Birdsfoot Cliffbrake or Fern (R)
<i>Penstemon grinnellii</i> Eastwood var. <i>grinnellii</i>	Grinnell Beardtongue (U)
<i>Penstemon heterophyllus</i> var. <i>australis</i> Munz & I.M. Johnston	Southern Mountain Penstemon (R)
<i>Penstemon laetus</i> Gray var. <i>laetus</i>	Gay Penstemon (U)
<i>Pentachaeta fragilis</i> Brandege	Fragile Pentachaeta (R, CNPS 4.3)
<i>Pentachaeta lyonii</i> Gray	Lyon's Pentachaeta (R, FE, SE, CNPS 1B.1)
<i>Pentagramma triangularis</i> ssp. <i>semipallida</i> (J.T. Howell) Yatsk., Windham, & E. Wollenw.	Silverback Fern (R)
<i>Pentagramma triangularis</i> ssp. <i>viscosa</i> (D.C. Eaton) Yatsk., Windham, & E. Wollenw.	San Nicolas Island Fern (R)
<i>Perideridia gairdneri</i> (Hook. & Arn.) Mathias ssp. <i>gairdneri</i>	Gairdner Yampah (R, CNPS 4.2)
<i>Perideridia parishii</i> ssp. <i>latifolia</i> (Gray) Chuang & Constance	Parish Yampah (R)
<i>Perideridia pringlei</i> (J.M. Coulter & Rose) A. Nelson & J.F. Macbr.	Adobe or Pringle Yampah (U, CNPS 4.3)
<i>Perityle emoryi</i> Torrey	Rock Daisy (U)
<i>Phacelia affinis</i> Gray var. <i>affinis</i>	Phacelia (R)
<i>Phacelia austromontana</i> J.T. Howell	Low Phacelia (R)
<i>Phacelia bicolor</i> Torrey ex S. Watson	Bicolored Phacelia (R)
<i>Phacelia cicutaria</i> E. Greene var. <i>cutaria</i>	Caterpillar Phacelia (U)
<i>Phacelia cicutaria</i> var. <i>hubbyi</i> (J.F. Macbr.) J.T. Howell	Hubby Caterpillar Phacelia (U, CNPS 4.2)
<i>Phacelia ciliata</i> Benth. var. <i>ciliata</i>	Ciliate Phacelia (U)

**Scientific Name**

*Phacelia crenulata* var. *minutiflora* (J.W. Voss ex Munz) Jepson  
*Phacelia cryptantha* E. Greene  
*Phacelia exilis* (Gray) G.J. Lee  
*Phacelia grisea* Gray  
*Phacelia humilis* var. *dudleyi* J. Howell  
*Phacelia imbricata* ssp. *patula* (Brand) Heckard  
*Phacelia minor* (Harvey) Thellung  
*Phacelia mohavensis* A. Gray  
*Phacelia mutabilis* Greene  
*Phacelia oreopola* Heckard ssp. *oreopela*  
*Phacelia platyloba* A. Gray  
*Phacelia ramosissima* var. *austrolittoralis* Munz  
*Phacelia ramosissima* var. *latifolia* (Torrey) Cronq.  
*Phacelia rattanii* A. Gray  
*Phacelia viscida* var. *albiflora* (Nuttall) A. Gray  
*Phalaris lemmonii* Vasey  
*Phlox austromontana* Coville  
*Phlox caespitosa* Nuttall  
*Phlox diffusa* Benth.  
*Phlox hoodii* ssp. *canescens* (T. & G.) Wherry  
*Pholistoma membranaceum* (Benth.) Constance  
*Pholistoma racemosum* (Nutt. ex A. Gray) Constance  
*Phoradendron pauciflorum* Torrey  
*Phragmites australis* (Cav.) Steudel  
*Phyla nodiflora* (L.) E. Greene var. *nodiflora*  
*Phyllospadix scouleri* Hook.  
*Phyllospadix torreyi* S. Watson  
*Pickeringia montana* Nutt. var. *montana*  
*Pilularia americana* A. Braun  
*Pinus contorta* ssp. *murrayana* (Grev. & Balf.) Critchf.  
*Pinus coulteri* D. Don  
*Pinus flexilis* E. James  
*Pinus sabiniana* Douglas  
*Piperia cooperi* (S. Watson) Rydb.  
*Piperia elongata* Rydb.  
*Piperia michaelii* (Greene) Rydb.  
*Piperia unalascensis* (Spreng.) Rydb  
*Plagiobothrys acanthocarpus* (Piper) I.M. Johnston  
*Plagiobothrys arizonicus* (Gray) Gray  
*Plagiobothrys canescens* Benth.  
*Plagiobothrys collinus* var. *fulvescens* (I.M. Johnston) Higgins  
*Plagiobothrys collinus* var. *gracilis* (A. Gray) Higgins  
*Plagiobothrys hispidulus* (E. Greene) I.M. Johnston  
*Plagiobothrys leptocladus* (E. Greene) I.M. Johnston  
*Plagiobothrys tenellus* (Nuttall) A. Gray  
*Plagiobothrys undulatus* (Piper) I.M. Johnston  
*Plantago elongata* Pursh  
*Plantago ovata* var. *fastigiata* (Morris) S.C. Meyers & A. Liston  
*Plantago ovata* var. *insularis* (Eastw.) S.C. Meyers & A. Liston  
*Plantago patagonica* Jacq.  
*Plantago pusilla* Nuttall  
*Platanthera leucostachys* Lindley  
*Platanthera sparsiflora* (S. Watson) Schltr.  
*Plectritis ciliosa* ssp. *insignis* (Suksd.) D. Morey  
*Plectritis macrocera* Torrey & A. Gray  
*Pluchea odorata* (L.) Cass.

**Common Name**

Small-flowered Crenulate Phacelia (R)  
Forget-Me-Not Phacelia (R)  
Transverse Range Phacelia (R, CNPS 4.3)  
White-flowered Phacelia (R)  
Dudley Phacelia (R)  
Mountain Phacelia (R)  
Wild Canterbury Bell (R)  
Mojave Phacelia (R, CNPS 4.3)  
Changeable Phacelia (R)  
Mountain Phacelia (R)  
Phacelia (R)  
South Coast Branching Phacelia (R, CNPS 3.2)  
Branching Phacelia (U)  
Brand Phacelia (R)  
White-flowered Viscid Phacelia (R)  
Lemmon Canarygrass (R)  
Spreading Phlox (R)  
Rigid Mat Phlox (R)  
Mat Phlox (R)  
Fuzzy Hood Phlox (R)  
White Fiesta Flower (R)  
South Coast Fiesta Flower (R)  
Few-flowered Mistletoe (R)  
Common Reed (R)  
Common Frog-fruit (R)  
Scouler Surf-grass (R)  
Torrey Surf-grass (U)  
Chaparral Pea (U)  
American Pillwort (R)  
Lodgepole Pine (R)  
Coulter Pine (R)  
Limber Pine (R)  
Foothill or Gray Pine (R)  
Chaparral Rein Orchid (R, CNPS 4.2)  
Dense-flowered Rein Orchid (R)  
Michael Piperia (R, CNPS 4.2)  
Slender-spire Orchid (R)  
Adobe Popcornflower (R)  
Arizona Popcornflower (R)  
Valley or Bracted Popcornflower (R)  
Popcornflower (R)  
Slender California Popcornflower (R)  
Hispid Popcornflower (R)  
Alkali Popcornflower (R)  
Slender Popcornflower (R)  
Undulate Popcornflower (R)  
Coastal Plantain (R)  
Ovate Plantain (U)  
Ovate Plantain (U)  
Patagonia Plantain (R)  
Plantain (R)  
White-flowered Bog-Orchid (R)  
Few-flowered Rein Orchid (R)  
Petite Long-spurred Plectritis (R)  
White Plectritis (R)  
Saltmarsh Fleabane (U)

**Scientific Name**

*Pluchea sericea* (Nutt.) Coville  
*Poa secunda* ssp. *juncifolia* (Scribner) R. Soreng  
*Polemonium micranthum* Benth.  
*Polycarpon depressum* Nutt.  
*Polygala cornuta* var. *fishiae* (C. Parry) Jeps.  
*Polygonum amphibium* var. *emersum* Michx.  
*Polygonum douglasii* ssp. *johnstonii* (Munz) J. Hickman  
*Polygonum hydropiperoides* Michaux  
*Polygonum lapathifolium* L.  
*Polygonum polygaloides* ssp. *kelloggii* (Greene) J. Hickman  
*Polygonum punctatum* Elliott  
*Polygonum sawatchense* Small ssp. *sawatchense*  
*Polypodium hesperium* Maxon  
*Polystichum imbricans* ssp. *curtum* (Ewan) D.H. Wagner  
*Polystichum imbricans* (D.C. Eaton) D.H. Wagner ssp. *imbricans*  
*Polystichum munitum* (Kaulf.) C. Presl  
*Populus Xparryi* Sargent  
*Populus trichocarpa* Torrey & A. Gray  
*Potamogeton foliosus* Raf. var. *foliosus*  
*Potamogeton nodosus* Poiret  
*Potentilla biennis* Greene  
*Potentilla gracilis* var. *elmeri* (Rydb.) Jeps.  
*Prunus emarginata* (Hooker) Walp.  
*Prunus ilicifolia* ssp. *lyonii* (Eastw.) P. Raven

---

*Pseudognaphalium beneolens* (A. Gray) Anderberg  
*Pseudognaphalium leucocephalum* (A. Davidson) Anderberg  
*Pseudognaphalium ramosissimum* (Nutt.) Anderberg  
*Pseudostellaria jamesiana* (Torrey) W.A. Weber & R.I. Hartman  
*Psilocarphus brevissimus* Nutt. var. *brevissimus*  
*Psilocarphus chilensis* A. Gray  
*Pterospora andromedea* Nutt.  
*Purshia tridentata* var. *glandulosa* (Curran) M.E. Jones  
*Pyrola asarifolai* Michx. ssp. *asarifolia*  
*Pyrola picta* Smith  
*Pyrrocoma racemosa* var. *paniculata* (Nutt.) J. Kartesz & K. Gandhi  
*Quercus Xalvordiana* Eastwood (*Q. douglasii* X *Q. john-tuckeri*)  
*Quercus douglasii* H. & A.  
*Quercus dumosa* Nutt.  
*Quercus Xmacdonaldii* Greene  
*Quercus Xmoreha* Kellogg  
*Quercus palmeri* Engelm.  
*Quercus tomentella* Engelm.

---

*Quercus turbinella* Greene ssp. *turbinella*  
*Ranunculus aquatilis* var. *capillaceus* (Thuill.) DC.  
*Ranunculus californicus* Bentham var. *californicus*  
*Ranunculus canus* var. *ludovicianus* (E. Greene) L.D. Benson  
*Ranunculus hebecarpus* Hooker & Arnott  
*Rhamnus tomentella* ssp. *cuspidata* (Greene) Sawyer  
*Rhus integrifolia* (Nutt.) Brewer & S. Watson XR. *ovata* S. Watson  
*Rhus trilobata* var. *malacophylla* (E. Greene) Jepson  
*Ribes amarum* McClatchie var. *amarum*  
*Ribes amarum* var. *hoffmannii* Munz  
*Ribes aureum* var. *gracillimum* (Cov. & Britton) Jeps.  
*Ribes californicum* Hooker & Arnott var. *californicum*  
*Ribes cereum* Douglas var. *cereum*  
*Ribes indecorum* Eastw.

**Common Name**

Arrow Weed (R)  
Rush Bluegrass (R)  
Phlox (U)  
California Allseed (R)  
Fish Milkwort (CNPS 4.3)  
Kelp, Water-Smartweed (R)  
Sawatch Knotweed (R)  
Mild Water Pepper, Water Smartweed (R)  
Willow Weed (U)  
Kellogg Knotweed (R)  
Dotted Smartweed (U)  
Sawatch Smartweed (R)  
Western Polypody (R)  
Imbricate Sword Fern (U)  
Imbricate Sword Fern (R)  
Western Sword Fern (R)  
Parry's Cottonwood (R)  
Black Cottonwood (Type)  
Leafy Pondweed (U)  
Long-leaved Pondweed (R)  
Biennial Cinquifol (R)  
Elmer Slender Cinquifol (U, Type)  
Bitter Cherry (R)  
Catalina Cherry (R)  
Coastal Everlasting (U)  
Whiteleaf or Sonora Everlasting (CNPS 2.2)  
Pink Everlasting (U)  
False Chickweed (R)  
Woolly Marbles (R)  
Round Woolly Marbles (R)  
Woodland Pinedrops (R)  
Antelope Bush (U)  
Bog Wintergreen (R)  
White-veined Wintergreen (R)  
Pyrrocoma (R)  
Alvord Oak (R)  
Blue Oak (R)  
Nuttall or Coastal Sage Scrub Oak (R, CNPS 1B.1)  
MacDonald Oak (R)  
Oracle Oak (R)  
Palmer Oak (R)  
Channel Island Oak (R)  
Sonoran Scrub Oak (R)  
Slender White Water Crowsfoot (R)  
California Buttercup (U)  
Transverse Ranges Buttercup (R)  
Hebe-fruited Buttercup (R)  
Cuspid Hoary Coffeeberry (R)  
Lemonade Berry-Sugar Bush Hybrid (R)  
Woolly Skunkbrush (U)  
Bitter Gooseberry (R)  
Hoffmann's Bitter Gooseberry (R, CNPS 3)  
Slender Golden Currant (R)  
Hillside Gooseberry (U)  
Wax Currant (U)  
White-flowered Currant (R)

**Scientific Name**

*Ribes montigenum* McClatchie  
*Ribes nevadense* Kellogg  
*Ribes quercetorum* Greene  
*Ribes roezlii* Regel var. *roezlii*  
*Ribes velutinum* Greene  
*Rigiopappus leptocladus* Gray  
*Romneya coulteri* Harvey  
*Rorippa curvisiliqua* (Hooker) Bessey ex Britton  
*Rorippa palustris* (L.) Besser var. *palustris*  
*Rosa woodsii* ssp. *ultramontana* (S. Watson) Roy L. Taylor & MacBryde  
*Rosa woodsii* ssp. *gratissima* (E. Greene) W.H. Lewis & Ertter  
*Rotala ramosoira* (L.) Koehne  
*Rubus leucodermis* Torrey & A. Gray  
*Rubus parviflorus* Nuttall  
*Rumex fueginus* Phil. var. *ovato-cordatus* Rech.f  
*Rumex hymenosepalus* Torrey  
*Rumex maritimus* L.  
*Rumex salicifolius* var. *crassus* (Rech. f.) J. Howell  
*Rupertia physodes* (Hook.) Grimes  
*Ruppia cirrhosa* (Petagna) Grande  
*Ruppia maritima* L.  
*Sagina decumbens* ssp. *occidentalis* (S. Wats.) G. Crow  
*Sagina saginoides* (L.) H. Karst.  
*Sagittaria sanfordii* Greene  
*Salicornia bigelovii* Torrey  
*Salicornia depressa* Standley  
*Salix gooddingii* C. Ball  
*Salix lasiolepis* var. *bigelovii* (Torrey) Bebb.  
*Salix melanopsis* Nuttall  
*Saltugilia australis* (H. Mason & A.E. Grant) L.A. Johnson  
*Salvia Xbernardina* Parish ex Greene  
*Salvia carduacea* Benth.  
*Salvia dorrii* var. *pilosa* (Gray) Strachan & Reveal  
*Samolus parviflorus* Raf.  
*Sanicula bipinnatifida* Hooker  
*Sanicula graveolens* Peopp. ex DC.  
*Sanicula tuberosa* Torrey  
*Sarcodes sanguinea* Torrey  
*Saussurea americana* D. Eaton  
*Schoenoplectus acutus* var. *occidentalis* (S. Watson) S.G. Smith  
*Schoenoplectus californicus* (C. Meyer) Soják, Čas. Nár.  
*Schoenoplectus pungens* var. *badius* (J. Presl & C. Presl) S.G. Smith  
*Schoenoplectus pungens* var. *longispicatus* (Britton) S.G. Smith  
*Schoenoplectus saximontanus* (Fern.) J. Raynal  
*Schoenoplectus tabernaemontani* (C. Gmelin) Palla  
*Scirpus microcarpus* J. Presl & C. Presl  
*Scrophularia californica* ssp. *floribunda* (E. Greene) Shaw  
*Scutellaria siphocampyloides* Vatke  
*Scutellaria tuberosa* Benth.  
*Senecio aphanactis* Greene  
*Senecio flaccidus* var. *monoensis* (Greene) B.L. Turner & T.M. Barkley  
*Setaria gracilis* Kunth  
*Setaria parviflora* (Poir.) Kerguelen  
*Shepherdia argentea* Nutt.  
*Sidalcea malviflora* ssp. *dolosa* C.L. Hitchc.  
*Sidalcea neomexicana* Gray

**Common Name**

Mountain Gooseberry (R)  
 Mountain Pink Currant (R)  
 Oak Gooseberry (U)  
 Sierra Gooseberry (U)  
 Plateau Gooseberry (R)  
 Rigiopappus (U)  
 Coulter Matilija Poppy (U, CNPS 4.2)  
 Curved-pod Water- cress (R)  
 Western Riparian Yellow-cress (R)  
 Interior Wild Rose (R)  
 Mojave Wild Rose (R)  
 Lowland Toothcup (R)  
 Whitebark Raspberry (R)  
 Thimbleberry (R)  
 Oxnard Dock (R, Type)  
 Wild Rhubarb, Canaigre (R)  
 Golden Dock (R)  
 Willow Dock (R)  
 Scurf-pea (R)  
 Spiral Wigeon-grass or Ditch-grass (R)  
 Wigeon-grass, Ditch-grass (R)  
 Western Pearlwort (R)  
 Sagina, Arctic Pearlwort (R)  
 Sanford Arrow-head (R, CNPS 1B.2)  
 Bigelow Pickleweed (R)  
 Pickleweed (R)  
 Goodding Black Willow (R)  
 Bigelow Arroyo Willow (R)  
 Dusky Willow (R)  
 Southern Gilia (R)  
 Bernard's Sage (R)  
 Thistle Sage (R)  
 Pilose Desert Sage (R)  
 Water-pimpernel (R)  
 Purple Sanicle (R)  
 Sanicle (R)  
 Tuberosa Sanicle (R)  
 Snow Plant (U)  
 American Sawwort (R)  
 Viscid Tule (U)  
 California Bulrush (U)  
 Common Threesquare (U)  
 Common Threesquare (U)  
 Rocky Mountain Bulrush (R)  
 Soft-stem Bulrush (R)  
 Small-fruited Bulrush (U)  
 Many-flowered Figwort (R)  
 Skullcap (U)  
 Danny Skullcap (U)  
 Rayless Ragwort (R)  
 Mono Butterweed (R)  
 Knotroot Bristlegrass (R)  
 Knotroot Bristlegrass (R)  
 Buffalo Berry, Silver Buffaloberry (U)  
 Dwarf Globemallow or Checkerbloom (R)  
 Salt Spring Checkermallow (R, CNPS 2.2)

**Scientific Name**

*Sidalcea pedata* Gray  
*Sidothea caryophylloides* (C. Parry) Reveal  
*Silene antirrhina* L.  
*Silene bernardina* S. Watson  
*Silene laciniata* ssp. *californica* (Durand) J.K. Morton  
*Silene lemmonii* S. Watson  
*Solanum parishii* A.A. Heller  
*Solanum umbelliferum* Eschsch.  
*Solanum wallacei* (A. Gray) Parish  
*Solidago guiradonis* Gray  
*Solidago velutina* ssp. *sparsiflora* (A. Gray) Semple  
*Spergularia macrotheca* var. *leucantha* (E. Greene) Robinson  
*Sphaeralcea ambigua* A. Gray var. *ambigua*  
*Sphenosciadium capitellatum* Gray  
*Sporobolus airoides* (Torey) Torrey  
*Stachys rigida* Benth. var. *rigida*  
*Stebbinsoseris heterocarpa* (Nuttall) Chambers  
*Stellaria nitens* Nuttall  
*Stephanomeria exigua* Nuttall ssp. *exigua*  
*Stephanomeria virgata* ssp. *pleurocarpa* (Greene) Gottlieb  
*Stillingia linearifolia* S. Watson  
*Stillingia spinulosa* Torrey  
*Stipa arida* M.E. Jones  
*Stipa diegoensis* Swallen  


---

*Stipa occidentalis* S. Watson var. *occidentalis*  
*Stipa occidentalis* var. *pubescens* (Vasey) J.R. Maze et al.  
*Stipa parishii* Vasey var. *parishii*  
*Stipa thurberiana* Piper  
*Streptanthus campestris* S. Watson  
*Stuckenia pectinata* (L.) Börner  
*Stylocline gnaphaloides* Nuttall  
*Stylomecon heterophylla* (Benth.) G. Taylor  
*Suaeda calceoliformis* (Hook.) Moq.  
*Suaeda californica* S. Watson var. *californica*  
*Suaeda californica* var. *pubescens* Jepson  
*Suaeda taxifolia* (Standl.) Standl.  
*Suaeda esteroa* Ferren & Whitmore  
*Suaeda nigra* (Rafinesque) J.F. Macbride  
*Swertia neglecta* (H.M. Hall) Jeps.  
*Symphoricarpos albus* var. *laevigatus* (Fern.) S.F. Blake  
*Symphyotrichum ascendens* (Lindl.) G.L. Nesom  
*Symphyotrichum greatae* (Parish) G.L. Nesom  
*Symphyotrichum lanceolatum* var. *hesperium* (A.Gray) G.L. Nesom  
*Syntrichopappus lemmonii* (A. Gray) A. Gray  
*Tauschia hartwegii* (A.Gray) J.F. Macbr.  
*Tetradymia canescens* DC.  
*Tetradymia comosa* Gray  
*Tetrapteron graciliflorum* (Hooker & Arnott) W.L. Wagner & Hoch  
*Thalictrum fendleri* Engelm. ex Gray  
*Thalictrum polycarpum* (Torrey) S. Watson  
*Thermopsis californica* var. *argentata* (Greene) Chen & Turner  
*Thermopsis macrophylla* Hooker & Arnott var. *macrophylla*  
*Thermopsis macrophylla* var. *venosa* (Eastwood) Isely  
*Thysanocarpus conchuliferus* E. Greene  
*Trichostema austromontanum* Harlan Lewis ssp. *austromontanum*  
*Trichostema micranthum* Gray

**Common Name**

Bird-footed Checkerbloom (R)  
 Chickweed Oxytheca (R, CNPS 4.3)  
 Snapdragon Campion, Catchfly (U)  
 Palmer Campion (R)  
 California Indian Pink (R)  
 Lemmon Campion or Catchfly (R)  
 Parish Nightshade (R)  
 Blue Witch (U)  
 Wallace's Nightshade (R)  
 Guirado Goldenrod (R, CNPS 4.2)  
 Few-leaved Goldenrod (R)  
 White Large[-flowered] Sandspurrey (R)  
 Apricot Mallow (R)  
 Ranger Buttons, Swamp White Heads (R)  
 Alkali Sacaton (R)  
 Rigid Hedge Nettle (R)  
 Chicory Microseris (U)  
 Shining Chickweed (U)  
 Small Stephanomeria (R)  
 Two-fruited Wreath Plant (R)  
 Narrowleaf Stillingia (R-extirpated?)  
 Annual Toothleaf (R-extirpated?)  
 Mormon Needlegrass (R)  
 San Diego Needlegrass (CNPS 4.2)  
 Western Needlegrass (R)  
 Elmer Needlegrass (R)  
 Parish Needlegrass (R)  
 Thurber Needlegrass (R)  
 Southern Jewelflower (R, CNPS 1B.3)  
 Fennel-leaf Pondweed (R)  
 Everlasting Nest Straw (U)  
 Wind Poppy (U)  
 Seablite (R)  
 California Seablite (R, FE, CNPS 1B.1)  
 Hairy California Seablite (FE, CNPS 1B.1)  
 Woolly Seablite (O, CNPS 4.2)  
 Estuary Seablite (R, CNPS 1B.2)  
 Bush Seepweed (R)  
 Pine Green Gentian (CNPS 4.3)  
 Snowberry (R)  
 Long-leaved Aster (R)  
 Greata's Aster (R, CNPS 1B.3)  
 Siskiyou Aster (R)  
 Lemmon's Xerasid (R, CNPS 4.3)  
 Hartweg Tauschia (U)  
 Cottonthorn, Horsebush (R)  
 Cottonthorn, Horsebush (R)  
 Hill Sun-cup (U)  
 Fendler Meadow-rue (R)  
 Tall Western Meadow-rue (R)  
 Silvery False-Lupine (U, CNPS 4.3)  
 Santa Ynez False-Lupine (R, SR, CNPS 1B.3)  
 Slender Santa Ynez False-Lupine (R)  
 Santa Cruz Island Fringepod (R)  
 San Jacinto Bluecurls (R)  
 Bluecurls (R)



**Scientific Name**

**Common Name**

<i>Trichostema ovatum</i> Curran	Ovate Bluecurls (R)
<i>Trifolium bifidum</i> var. <i>decipiens</i> E. Greene	Pinole Clover (R)
<i>Trifolium ciliolatum</i> Benth.	Ciliate or Tree Clover (U)
<i>Trifolium cyathiferum</i> Lindley	Ciliate or Tree Clover (R)
<i>Trifolium depauperatum</i> var. <i>amplectens</i> (T. & G.) L.F. McDermott	Dwarf Sack Clover (R)
<i>Trifolium depauperatum</i> var. <i>truncatum</i> (Greene ) Islay	Truncate Dwarf Sack Clover (U)
<i>Trifolium dictotomum</i> H. & A.	Island Rancheria Clover (R)
<i>Trifolium fucatum</i> Lindley	Bull Clover (U)
<i>Trifolium longipes</i> ssp. <i>atorrubens</i> (Greene) J.M. Gillett	Purple Clover (R)
<i>Trifolium microdon</i> Hook. & Arn.	Tiny-head Clover (R)
<i>Trifolium monanthum</i> var. <i>grantianum</i> (A.A. Heller) Parish	Carpet Clover (R)
<i>Trifolium monanthum</i> Gray var. <i>monanthum</i>	Carpet Clover (R)
<i>Trifolium obtusiflorum</i> Hooker & Arnott	Creek Clover (U)
<i>Trifolium palmeri</i> S. Watson	Palmer Pinpoint Clover (R)
<i>Trifolium variegatum</i> Nutt. var. <i>variegatum</i>	Whitetip Clover (R)
<i>Trifolium wormskioldii</i> Lehm.	Cows Clover (R)
<i>Triglochin concinna</i> Davy var. <i>concinna</i>	Utah Arrow-grass (R)
<i>Triglochin maritima</i> L.	Seaside Arrow-grass (R)
<i>Triglochin striata</i> R. & P.	Three-ribbed Arrow-grass (R)
<i>Triteleia ixioides</i> (Aif. F.) Greene ssp. <i>ixioides</i>	Golden Brodiaea (R)
<i>Tropidocarpum gracile</i> Hook. [var. <i>dubium</i> ]	Slender Tropidocarpum (R)
<i>Typha angustifolia</i> L.	Slender Cattail (R)
<i>Typha latifolia</i> L.	Broad-leaved Cattail, Soft Flag (U)
<i>Typha Xdomingensis</i> Pers.	Southern Cattail Hybrid (R)
<i>Veratrum californicum</i> Durand var. <i>californicum</i>	California False Hellebore (R)
<i>Verbena bracteata</i> Lagasca & J.D. Rodriguez	Prostrate Verbena (R)
<i>Verbena lasiostachys</i> var. <i>scabrida</i> Mold.	Western Verbena (R)
<i>Veronica peregrina</i> ssp. <i>xalapensis</i> (Kunth) Pennell	Purslane Speedwell (U)
<i>Veronica serpyllifolia</i> ssp. <i>humifusa</i> (Dickson) Syme	Tyme-leaved Speedwell (R)
<i>Vicia americana</i> Willd. var. <i>americana</i>	American Vetch (U)
<i>Vicia hassei</i> S. Watson	Hasse Vetch (R)
<i>Vicia ludoviciana</i> Nutt. var. <i>ludoviciana</i>	Vetch (R)
<i>Viola aurea</i> Kellogg	Golden Violet (R)
<i>Viola macloskeyi</i> F.E. Lloyd ssp. <i>macloskeyi</i>	Small White Violet (R)
<i>Viola pedunculata</i> ssp. <i>tenuifolia</i> M.S. Baker & J.C. Clausen	Johnny-Jump-Up (R)
<i>Viola pinetorum</i> ssp. <i>grisea</i> (Jeps.) R.J. Little	Gray-leaved Violet (R, CNPS 1B.3)
<i>Viola pinetorum</i> Greene ssp. <i>pinetorum</i>	Mountain Violet (U)
<i>Viola purpurea</i> ssp. <i>mohavensis</i> (M. Baker & J. Clausen) J. Clausen	Mojave Yellow Violet (U)
<i>Viola purpurea</i> Kellogg ssp. <i>purpurea</i>	Purple or Mountain Violet (U)
<i>Viola purpurea</i> ssp. <i>quercetorum</i> (M. Baker & J. Clausen) R.J. Little	Oak Violet (U)
<i>Vitis californica</i> Benth.	California Wild Grape (R)
<i>Vitis girdiana</i> Munson	Desert Wild Grape (R)
<i>Vulpia microstachys</i> var. <i>confusa</i> (Piper) Lonard & Gould	Ciliate Fescue (R)
<i>Yabea microcarpa</i> (Hooker & Arnott) Koso-Pol.	Yabea (R)
<i>Zannichellia palustris</i> L.	Horned-Pondweed (R)
<i>Zostera marina</i> L.	Eel-grass (R)

## Plants Expected to Occur in Ventura County But Lacking Physical Evidence<sup>15</sup>

### Scientific Name

*Abronia latifolia* Eschsch.  
*Achnatherum latiglumis* (Swallen) Barkworth  
*Actaea rubra* (Aiton) Wildenow  
*Adiantum aleuticum* (Rupr.) C.A. Paris  
*Agastache urticifolia* (Benham) Kuntze var. *urticifolia*  
*Agrostis microphylla* Steudel  
*Agrostis scabra* Willd.  
*Allenrolfea occidentalis* (S. Watson) Kuntze  
*Alopecurus aequalis* Sobol. var. *aequalis*  
*Alopecurus geniculatus* L.  
*Ambrosia dumosa* (A. Gray) Payne  
*Amsinckia eastwoodae* J.F. Macbr.  
*Anaphalis margaritacea* (L.) Benth. & Hooker F. ex C.B. Clarke  
*Arabis platysperma* Gray var. *platysperma*  
*Aristida purpurea* var. *nealleyi* (Vasey) K.W. Allred  
*Aristida purpurea* var. *wrightii* (A. Hitchc.) K.W. Allred  
*Artemisia ludoviciana* ssp. *incompta* (Nuttall) Keck  
*Aster occidentalis* (Nuttall) Torrey & A. Gray var. *occidentalis*  
*Athyrium filix-femina* var. *californicum* Butters  
*Athyrium filix-femina* var. *cyclosorum* Ruprecht  
*Atriplex parishii* S. Watson  
*Azolla mexicana* C. Presl  
*Berberis pinnata* Lagasca ssp. *pinnata*  
*Brodiaea elegans* Hoover ssp. *elegans*  
*Brodiaea jolonensis* Eastwood  
*Calystegia longipes* (S. Watson) Brummitt  
*Calystegia sepium* ssp. *limnophila* (E. Greene) Brummitt  
*Carex serratodens* W. Boott  
*Castilleja campestris* (Bentham) Chuang & Heckard ssp. *campestris*  
*Castilleja densiflora* ssp. *gracilis* (Benth.) Chuang & Heckard  
*Castilleja gyroloba* Pennell  
*Caulanthus crassicaulis* (Torrey) S. Watson var. *crassicaulis*  
*Celtis reticulata* Torrey  
*Centaurium muhlenbergii* (Griseb.) W. Wright ex Piper  
*Centromadia fitchii* (A. Gray) E. Greene  
*Cephalanthera austini* (A. Gray) Heller  
*Chamaesyce serpyllifolia* ssp. *hirtula* (S. Watson) Koutnik  
*Chenopodium littoreum* Benet-Pierce & M.G. Simpson  
*Chenodium rubrum* var. *humile* (Hooker) S. Watson  
*Chorizanthe fimbriata* Nuttall var. *fimbriata*  
*Chorizanthe obovata* Goodman  
*Chorizanthe wheeleri* S. Watson  
*Circaea alpina* ssp. *pacifica* (Aschers. & Magnus) Raven  
*Cladium californicum* (S. Watson) O'Neill  
*Clarkia similis* Harlan Lewis & Ernst  
*Clematis pauciflora* Nuttall  
*Collomia linearis* Nuttall  
*Comarostaphylis diversifolia* ssp. *planifolia* (Jeps.) G.D. Wallace

### Common Name

Coastal or Yellow Sand-verbena Φ  
Needlegrass Φ  
Red Banberry Φ  
Western Five-finger Fern or Maidenhair Φ  
Nettleleaf Horsemint, Giant Hyssop Φ  
Small-leaved Bentgrass Φ  
Rough Bentgrass Φ  
Iodine Bush Φ  
Short-awn Foxtail Φ  
Water Foxtail Φ  
White Bur-sage, Burro Bush, Burro-Weed Φ  
Elegant Fiddleneck Φ  
Pearly Everlasting Φ  
Pioneer Rock Cress Φ  
Nealley Three-awn Grass Φ  
Parish Three-awn Grass Φ  
White Sagebrush Φ  
Western Mountain Aster Φ  
Southwestern Lady Fern Φ  
Northwestern Lady Fern Φ  
Parish Brittle-scale Φ  
Mexican Duckweed Fern Φ  
Pinnate-leaved Barberry Φ  
Elegant Brodiaea Φ  
Dwarf Brodiaea Φ  
Morning-glory Φ  
Riparian Morning-glory Φ  
Sawtooth Sedge Φ  
Field Owl's Clover Φ  
Slender Dense-flowered Owl's Clover Φ  
Indian Paintbrush Φ  
Thick-stem Wild Cabbage Φ  
Netleaf Hackberry Φ  
Monterey Centaury Φ  
Fitch Spikeweed Φ  
Phantom Orchid Φ  
Hairy Thyme-leaved Spurge Φ  
Coastal Goosefoot Φ  
Red Goosefoot Φ  
Fringed Spineflower (R) – Newhall Ranch  
Obovate Spineflower Φ  
Wheeler Spineflower Φ  
Enchanter's Nightshade Φ  
Saw-grass Φ  
Copy-cat Clarkia Φ  
Ropevine Φ  
Narrow-leaved Collomia Φ  
Simpleleaf Summer Holly Φ

<sup>15</sup> Taxa that are expected to occur within Ventura County but for which no vouchers have been collected or a knowledgeable botanist observed it (and documented its occurrence). If any of these taxa are found within Ventura County, they should be considered locally rare species. Plants with a "Φ" following the common name lack vouchers from Ventura County at the following herbaria (CAS, CDA, CHSC, DAV, IRVC, JEPS, NY, POM, RSA, SBBG, SD, SJSU, UC, UCI, UCR, UCSB, USSC).

**Scientific Name**

*Corallorhiza maculata* (Raf.) Raf.  
*Cornus nuttallii* Audubon  
*Cornus sericea* ssp. *occidentalis* (Torrey & A. Gray) Fosberg  
*Crassula solieri* (C. Gay) F. Meigen  
*Cuscuta californica* var. *papillosa* Yuncker  
*Cyperus niger* Ruiz Lopez & Pavon  
*Damasonium californicum* Benth  
*Deschampsia elongata* (Hooker) Benth  
*Descurainia incisa* (A. Gray) Britton ssp. *incisa*  
*Dodecatheon clevelandii* E. Greene ssp. *clevelandii*  
*Elatine rubella* Rydb.  
*Eleocharis parvula* (Roemer & Schultes) Link  
*Epilobium halleanum* Hausskn.  
*Epilobium minutum* Lindl. ex. Lehm.  
*Eremalche parryi* ssp. *kernensis* (C. Wolf) D. Bates  
*Erigeron foliosus* var. *franciscensis* G.L. Nesom  
*Erigeron philadelphicus* L.  
*Eriophyllum ambiguum* (A. Gray) A. Gray var. *ambiguum*  
*Eriophyllum lanatum* var. *hallii* Constance  
*Eschscholzia lemmonii* ssp. *kernensis* (Munz) C. Clark  
*Eustoma exaltatum* (L.) Don  
*Euphorbia crenulata* Engelm  
*Fraxinus latifolia* Benth  
*Galium californicum* ssp. *flaccidum* (E. Greene) Dempster & Stebb.  
*Gayophytum humile* A.L. Juss.  
*Gayophytum oligospermum* H. Lewis & J. Szwejkowski  
*Geranium carolinianum* L.  
*Geranium richardsonii* Fischer & Trautv.  
*Gilia tricolor* Benth ssp. *tricolor*  
*Glyptopleura marginata* D. Eaton  
*Grayia polygaloides* Hooker & Arnott  
*Helianthus californicus* DC.  
*Hesperolinon micranthum* (A. Gray) Small  
*Hesperomecon linearis* (Benth) E. Greene  
*Hordeum jubatum* L.  
*Hydrocotyle ranunculoides* L.f.  
*Hydrocotyle umbellata* L.  
*Hymenoclea monogyra* Torrey & Gray  
*Hymenoclea salsola* var. *pentalepis* (Rydb.) L. Benson  
*Iris douglasiana* Herbert in W.J. Hooker and G.A.W. Arnott  
*Isoetes orcuttii* A.A. Eaton  
*Juncus bryoides* F.J. Hermann  
*Juncus falcatus* E. Meyer var. *falcatus*  
*Juncus orthophyllus* Cov.  
*Lasthenia fremontii* (A. Gray) E. Greene  
*Lasthenia glaberrima* A. DC.  
*Lasthenia microglossa* (A. DC.) E. Greene  
*Layia hieracioides* (DC.) Hooker & Arnott  
*Lepidium latipes* Hooker var. *latipes*  
*Lilaea scilloides* (Poir.) Haum.  
*Lonicera hispidula* var. *vacillans* A. Gray  
*Lonicera interrupta* Benth. X *Lonicera hispidula* var. *vacillans* Gray  
*Luzula comosa* E. Meyer  
*Luzula subsessilis* (S. Watson) Buchenau  
*Mimulus palmeri* A. Gray  
*Minuartia californica* (A. Gray) Mattf.

**Common Name**

Spotted Coral Root Φ  
Mountain Dogwood Φ  
Western American Dogwood Φ  
Solier Vernal Pool Water Pigmy-weed Φ  
California Dodder Φ  
Black Flatsedge Φ  
Fringed Water-Plantain Φ  
Slender Hairgrass Φ  
Richardson Tansy Mustard Φ  
Cleveland Shooting Star Φ  
Waterwort Φ  
Colorado Spike-rush Φ (CNPS 4.3)  
Gland Willowherb Φ  
Chaparral Willowherb Φ  
Kern Mallow Φ  
San Francisco Leafy Fleabane Φ  
Philadelphia Fleabane Φ  
Ambiguous Woolly Daisy Φ  
Fort Tejon Yarrow Φ  
Tejon Poppy Φ  
Catchfly Gentian Φ  
Chinese Caps Φ  
Oregon Ash Φ  
California Bedstraw Φ  
Low Gayophytum Φ  
Southern California Mountain Gayophytum Φ  
Cransebill, Carolina Geranium Φ  
Mountain Geranium Φ  
Birds-eye or Tricolor Gilia Φ  
Sculpted-fruit Φ  
Hop-Sage Φ  
California Sunflower Φ  
Dwarf Flax Φ  
Western Poppy Φ  
Foxtail Barley Φ  
False-crowfoot Pennywort Φ  
Marsh Pennywort Φ  
Leafy Burrobrush Φ  
Southern Burrobrush Φ  
Mountain Iris Φ  
Orcutt Quillwort Φ  
Moss Rush Φ  
Sickleleaf Rush Φ  
Straight-leaf Rush Φ  
Fremont Goldfields Φ  
Rayless or Smooth Goldfields Φ  
Small-rayed Goldfields Φ  
Tall Layia Φ  
Dwarf Peppergrass Φ  
Flowering Quillwort Φ  
California Honeysuckle Φ  
Chaparral Honeysuckle hybrid Φ  
Wood Rush Φ  
Wood Rush Φ  
Palmer Monkeyflower Φ  
California Sandwort Φ

**Scientific Name**

*Monardella australis* Abrams  
*Monardella villosa* ssp. *obispoensis* (Hoover) Jokerst  
*Najas marina* L.  
*Nemophila parviflora* var. *quercifolia* (Eastw.) Chandler  
*Opuntia phaeacantha* Engelm.  
*Orthocarpus linearilobus* Benth  
*Osmorhiza chilensis* Hooker & Arnott  
*Panicum acuminatum* Sw. var. *acuminatum*  
*Parnassia californica* (A. Gray) E. Greene  
*Penstemon spectabilis* Thurber var. [ssp.] *spectabilis*  
*Penstemon spectabilis* var. [ssp.] *subviscosus* (Keck) McMinn  
*Phacelia congdonii* Greene  
*Phoradendron libocedri* (Engelm.) Howell  
*Physalis acutifolia* (Miers) Sandw.  
*Plagiobothrys collinus* var. *californicus* (A. Gray) Higgins  
*Plectritis brachystemon* Fischer & C. Meyer  
*Pogogyne zizyphoroides* Benth  
*Polygonum amphibium* var. *stipulaceum* Coleman  
*Polygonum douglasii* E. Greene ssp. *douglasii*  
*Quercus garryana* var. *breweri* (Engelm.) Jeps.  
*Ranunculus aquatilis* var. *capillaceus* (Thuill.) DC.  
*Rubus leucodermis* var. *bernardinus* (E. Greene) Jepson  
*Rubus parviflorus* Nuttall  
*Sagittaria calycina* Englemann  
*Sagittaria latifolia* Willd.  
*Salix sitchensis* Bong.  
*Sanicula hoffmannii* (Munz) Stan & Constance  
*Scutellaria bolanderi* ssp. *austromontana* Epling  
*Senecio californicus* DC.  
*Spirodela polyrrhiza* (L.) Schlied.  
*Spirodela punctata* C. Thompson  
*Sporobolus airoides* Torrey  
*Streptanthella longirostris* Rydb.  
*Thelypteris puberula* var. *sonorensis* A.R. Smith  
*Thermopsis macrophylla* Hook. & Arn. var. *macrophylla*  
*Trichostema parishii* Vasey  
*Triteleia dudleyi* Hoover  
*Triteleia hyacinthina* (Lindley) E. Greene  
*Triteleia ixioides* ssp. *scabra* (E. Greene) L. Lenz  
*Triteleia laxa* Benth  
*Utricularia vulgaris* L.  
*Vaccinium ovatum* Pursh  
*Viola sheltonii* Torrey  
*Wolffia borealis* Landolt & O. Wildi  
*Wolffia columbiana* Karsten  
*Wolffia globosa* Hartog & Plas  
*Wolffiella lingulata* Hegelm.  
*Wolffiella oblonga* (Phil.) Hegelm.  
*Wyethia ovata* T. & G.  
*Yucca brevifolia* var. *herbertii* (J.M. Webber) Munz

**Common Name**

Southern Coyote Mint Φ  
San Luis Obispo Coyote Mint Φ  
Spiny Naiad Φ  
Oak-leaved Nemophila (R)  
Engelmann Prickly Pear Φ  
Pallid Owl's Clover Φ  
Mountain Sweetroot or Sweet Cicely Φ  
Panicgrass Φ  
Grass-of-Parnassus Φ  
Royal Penstemon Φ  
Sticky Royal Penstemon Φ  
Congdon Phacelia Φ  
Incense-cedar Mistletoe Φ  
Ground-cherry Φ  
California Popcornflower Φ  
Small-flowered Pink Plectritis Φ  
Sacramento Mesamint Φ  
Stipuled Water-Smartweed Φ  
Douglas Knotweed Φ  
Brewer Oregon Oak Φ  
Slender White Water Crowfoot Φ  
Sticky Blackcap Raspberry Φ  
Thimbleberry Φ  
Hooded Arrowhead Φ  
Broadleaf Arrowhead Φ  
Sitka Willow Φ  
Hoffmann's Sanicle Φ  
Southern Skullcap Φ  
California Ragwort  
Duckmeat Φ  
Duckmeat Φ  
Alkali Sacaton Φ  
Dwarf Jewelflower Φ  
Sonoran Maiden Fern Φ  
False-Lupine Φ  
Parish Bluecurls Φ  
Dudley Tritelleia Φ  
White Tritelleia Φ  
Golden Brodiaea Φ  
Ithuriel Spear Φ  
Bladderwort Φ  
California Huckleberry Φ  
Shelton Violet Φ  
Water-meal Φ  
Coastal Water-meal Φ  
Globe Water-meal Φ  
Mud-midget Φ  
Oblong Water-meal Φ  
Mule-ears Φ  
Herbert Joshua Tree Φ

## Plants Recently Removed from List

Below is a list of taxa that were previously included on this list, but removed after the eleventh (presumed) extant population was found (through either direct field surveys or searches of herbaria records), or there was a taxonomic change that warranted deletion of the taxon from this list. This does not include plants listed by CNPS (2011) as rare throughout California (ranks 1 through 4). Only those taxa removed from the current edition are listed below. Consult earlier editions of this checklist for taxa removed from earlier editions.

<u>Scientific Name</u>	<u>Common Name</u>
<i>Achyrachaena mollis</i> Schauer	Blow-Wives (U)
<i>Allium diabloense</i> (Traub) D. McNeal	Diablo Onion (U)
<i>Amaranthus blitoides</i> S. Watson	Prostrate Amaranth (U)
<i>Ambrosia chamissonis</i> (Less.) E. Greene	Beach Bur (U)
<i>Ancistrocarphus filagineus</i> Gray	Woolly Fishhooks (U)
<i>Anisocoma acaulis</i> Torrey & A. Gray	Scale Bud (U)
<i>Arctostaphylos glandulosa</i> ssp. <i>cushingiana</i> (Eastw.) Keeley, Vasey & Parker	Cushing's Eastwood Manzanita (U)
<i>Arctostaphylos pungens</i> H.B.K.	Pungent Manzanita (U)
<i>Astragalus trichopodus</i> var. <i>lonchus</i> (M.E. Jones) Barneby	Three-pod Milkvetch (U)
<i>Atriplex leucophylla</i> (Moq.) D. Dietr.	Whiteleaf, Beach Saltbush or Seascale (U)
<i>Atriplex subspicata</i> (Nutt.) Rydb.	Saline Saltscale (R)
<i>Baccharis douglasii</i> DC.	Marsh Baccharis, Douglas False-willow (U)
<i>Bloomeria crocea</i> var. <i>montana</i> (E. Greene) Ingram	Mountain Goldenstars (U)
<i>Bombycilaena californicus</i> (Fischer & C. Meyer) Holub var. <i>californicus</i>	Slender Cottonweed (U)
<i>Bowlesia incana</i> Ruiz Lopez & Pavon	Hoary Bowlesia (U)
<i>Bromus laevipes</i> Shear	Woodland Brome (R)
<i>Calocedrus decurrens</i> (Torrey) Florin	Incense Cedar (U)
<i>Camissonia cheiranthifolia</i> ssp. <i>suffruticosa</i> (S. Watson) Raven	Beach Primrose (U)
<i>Camissoniopsis micrantha</i> (Sprengel) W.L. Wagner & Hoch	Tiny Primrose (U)
<i>Castilleja gyroloba</i> Pennell	Indian Paintbrush (R, Type)
<i>Castilleja linariifolia</i> Benth.	Linaria-leaved Indian Paintbrush (U)
<i>Castilleja minor</i> ssp. <i>spiralis</i> (Jeps.) Chuang & Heckard	Large-flowered Annual Indian Paintbrush (U)
<i>Ceanothus papillosus</i> ssp. <i>roweanus</i> McMinn	Wartleaf Ceanothus (R)
<i>Celtis reticulata</i> Torrey	Netleaf Hackberry
<i>Chamaesyce serpens</i> (Kunth) Small	Matted Sandmat (R)
<i>Clarkia cylindrica</i> (Jepson) H. Lewis & M. Lewis ssp. <i>cylindrica</i>	Cylindrical Godetia (R)
<i>Cylindropuntia prolifera</i> (Engelm.) F.M. Knuth in C. Backeberge & F.M. Knuth	Coastal Cholla (U)
<i>Delphinium parryi</i> ssp. <i>maritimum</i> (Davidson) M.J. Warnock	Maritime Larkspur (U)
<i>Delphinium patens</i> ssp. <i>hepaticoideum</i> Ewan	Spreading Larkspur (U)
<i>Delphinium patens</i> ssp. <i>montanum</i> (Munz) Ewan	Mountain Spreading Larkspur (R)
<i>Descurainia obtusa</i> ssp. <i>adenophora</i> (Wooton & Standley) Detl.	Desert Tansy Mustard (R)
<i>Dodecatheon clevelandii</i> ssp. <i>insulare</i> H.L. Thompson	Island Shooting Star (R)
<i>Dodecatheon clevelandii</i> ssp. <i>sanctarum</i> (E. Greene) Abrams	Cleveland Shooting Star (U)
<i>Drymocallis lactea</i> (Greene) Rydb. var. <i>lactea</i>	Sierra Nevada Sticky Cinquifol (U)
<i>Epilobium brachycarpum</i> C. Presl	Panicked Willow-herb (U)
<i>Epilobium canum</i> ssp. <i>latifolium</i> (Hook.) Raven	Broad-leaved California Fuchsia (U)
<i>Epipactis gigantea</i> Hook.	Stream Orchid (U)
<i>Ericameria pinifolia</i> (Gray) H.M. Hall	Pine Goldenbush (R)
<i>Garrya flavescens</i> S. Watson ssp. <i>flavescens</i>	Silk-tassel Bush (R)
<i>Grindelia camporum</i> var. <i>bracteosa</i> (J.T. Howell) M.A. Lane	Bracted Gumplant (U)
<i>Hesperevax sparsiflora</i> (A. Gray) E. Greene var. <i>sparsiflora</i>	Few-leaved Evax (R)
<i>Lathyrus vestitus</i> ssp. <i>laetiflorus</i> (Greene) Broich	Pacific Peavine (U)
<i>Lepidium campestre</i> (L.) R. Br.	Peppergrass (R)
<i>Lepidium dictyotum</i> var. <i>acutidens</i> A. Gray	Short-toothed Peppergrass
<i>Malacothamnus fremontii</i> (Torrey ex Gray) Torrey ex. Greene	Fremont Bushmallow (U)
<i>Mimulus johnstonii</i> A.L. Grant	Johnston Monkeyflower (R)
<i>Minuartia douglasii</i> (Fenzl ex T. & G.) Mattf.	Douglas Sandwort (R)
<i>Quercus wislizenii</i> ssp. <i>frutescens</i> (Engelm.) E. Murray	Shrubby Interior Live Oak (U)

**Scientific Name**

*Sanicula bipinnata* Hooker & Arnott

*Sarcocornia pacifica* (Standley) A.J. Scott [*Salicornia virginica* L.]

**Common Name**

Poison Sanicle (U)

Pacific Pickleweed or Swampfire (R)