

Checklist of Ventura County Rare Plants¹

By David L. Magney

California Native Plant Society, Rare Plant Program, Locally Rare Project
Updated 4 January 2017

Ventura County is located in southern California, USA, along the east edge of the Pacific Ocean. The coastal portion occurs along the south and southwestern quarter of the County. Ventura County is bounded by Santa Barbara County on the west, Kern County on the north, Los Angeles County on the east, and the Pacific Ocean generally on the south (Figure 1, General Location Map of Ventura County).

Ventura County extends north to 34.9014°N latitude at the northwest corner of the County. The County extends westward at Rincon Creek to 119.47991°W longitude, and eastward to 118.63233°W longitude at the west end of the San Fernando Valley just north of Chatsworth Reservoir. The mainland portion of the County reaches southward to 34.04567°N latitude between Solromar and Sequit Point west of Malibu. When including Anacapa and San Nicolas Islands, the southernmost extent of the County occurs at 33.21°N latitude and the westernmost extent at 119.58°W longitude, on the south side and west sides of San Nicolas Island, respectively.

Ventura County occupies 480,996 hectares [ha] (1,188,562 acres [ac]) or 4,810 square kilometers [sq. km] (1,857 sq. miles [mi]), which includes Anacapa and San Nicolas Islands. The mainland portion of the county is 474,852 ha (1,173,380 ac), or 4,748 sq. km (1,833 sq. mi.) in area and ranges in elevation from sea level on the southwest to 2,692 meters [m] (8,831 feet [ft.]) above sea level at its northern border on Mount Piños (Figure 2, Shade Relief Map of Mainland Ventura County). There appears to be some discrepancy in the actual area covered by Ventura County, depending on the source. For example, according to the California County Fact Book, 1983 edition (California Supervisors Association of California 1983), Ventura County occupies an area of 482,668 ha (1,192,680 ac) or 2,999 sq. km (1,863.6 sq. mi), with 3,254 ha (8,040 ac) or 20.3 sq. km (12.6 sq. mi) of that as water. The discrepancy appears to be a little over 2,469 ha (6,100 ac), which does not correspond to the area occupied by the two islands within the County. However, the difference does appear to match the area occupied by a rectangular portion of the county in the northeast corner, where the Ventura County Board of Supervisors voted to give away approximately 6,100 acres to Kern County to accommodate a proposed development that Ventura County felt it could not provide adequate County services to.

Mainland Ventura County is located between 34°00' and 35°00'N latitude and 118°38' and 119°28'W longitude, excluding Anacapa and San Nicolas Islands, and is generally longer than wide. Anacapa Islands are the smallest and easternmost of the northern Channel Islands while San Nicolas Island is an outer southern Channel Island.

¹ This document should be cited as: Magney, D.L. 2017. Checklist of Ventura County Rare Plants. 4 January 2017, Twenty-second Edition. California Native Plant Society, Channel Islands Chapter, Ojai, California. (Previous published update dated 22 July 2015.)

Figure 1. General Location Map of Ventura County

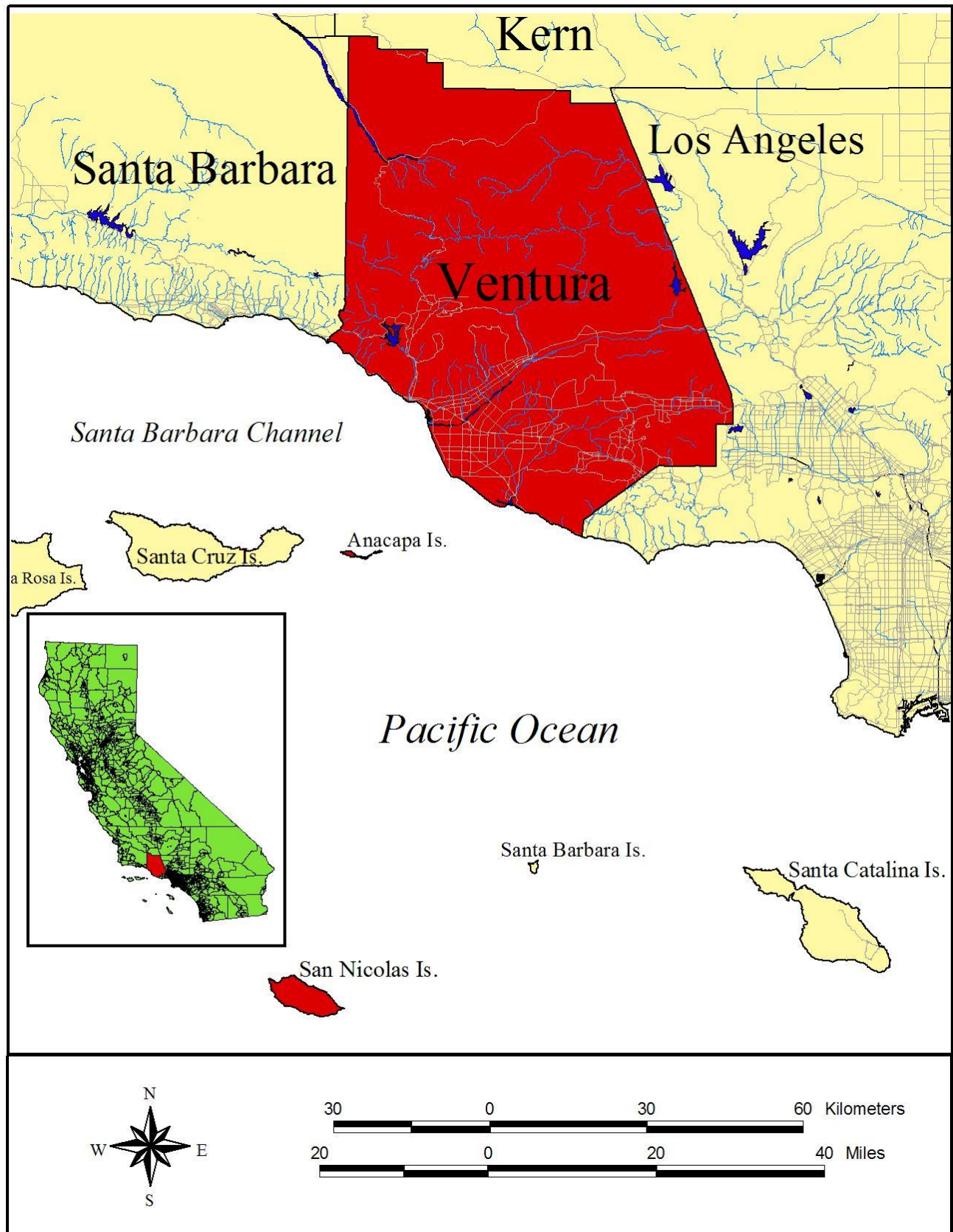
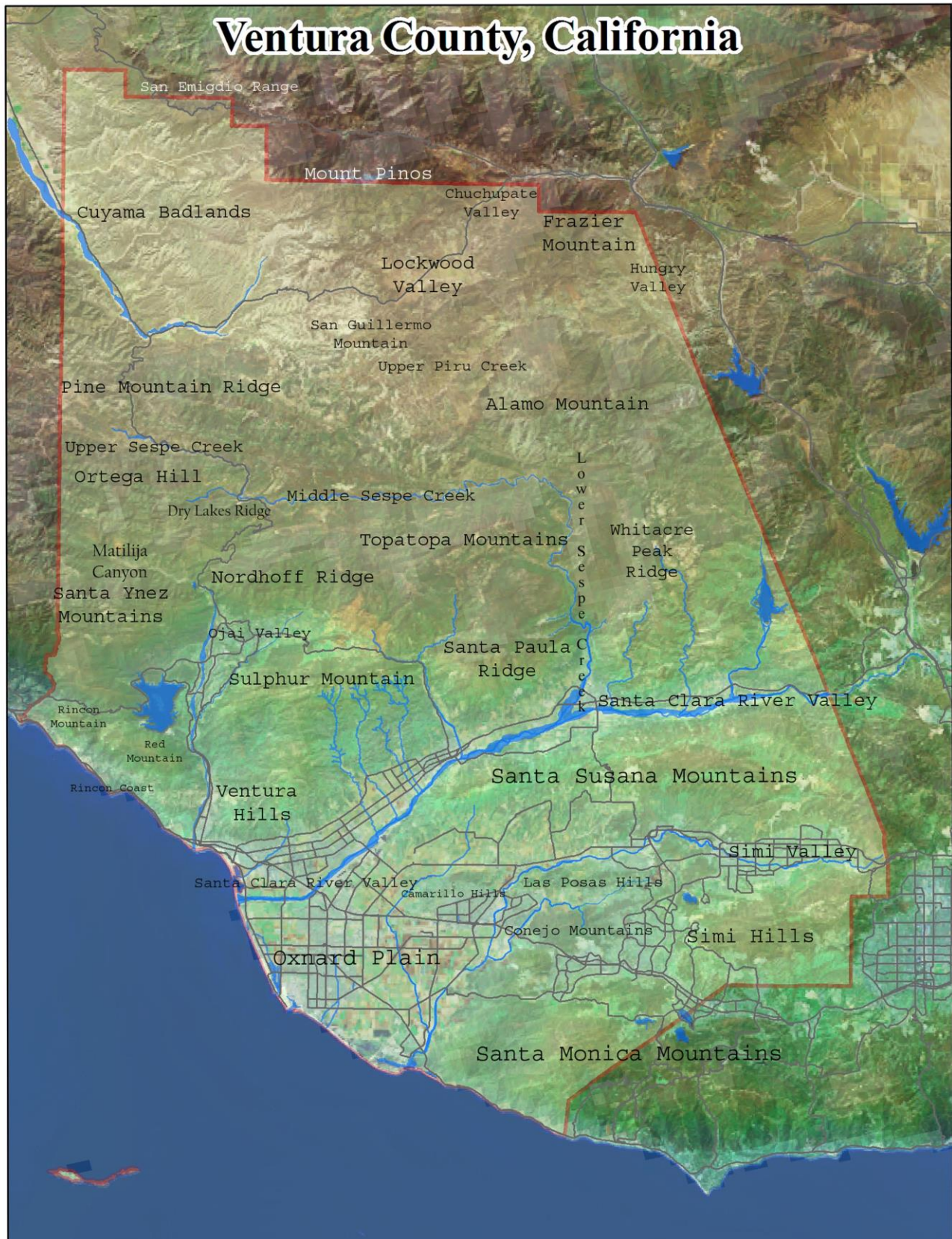


Figure 2. Shade Relief Map of Mainland Ventura County



The flora of Ventura County is comprised of approximately **2,741** native and naturalized vascular plant taxa, including those expected to occur but for which no vouchers are known (181 taxa) (Magney 2017²). A total of 2,420 taxa (88.3%) are known to occur in the county, which are supported by voucher specimens, with another 70 that have been observed by the author or reported by others, representing 90.8% of the county flora. Approximately 1,857 taxa (74.6%) of the flora are native, and another 633 (25.4%) taxa are not native (based on a flora of 2,490 taxa). A small percentage (10.0%) of the flora taxa (245 taxa) are quite common (dominant or common), on a scale ranging from dominant to rare (common, occasional, scattered, uncommon, and rare). Many more of the plant taxa in Ventura County are uncommon to quite rare.

All the species (including varieties and subspecies, which are lower taxonomic units than full species) of native and naturalized plants are important components of the biodiversity of life in Ventura County. While most species do not recognize political boundaries, such as county boundaries, our government agencies set policies and manage land use and resources based on such jurisdictional boundaries.

This list represents a compilation of known records and observations (many by the author) of all native vascular plant species:

- With ten (10) or fewer populations within Ventura County;
- Listed by the California Native Plant Society (CNPS) on a statewide basis (CNPS 2001³, 2016⁴);
- Listed by the US Fish and Wildlife Service as Threatened or Endangered under the federal Endangered Species Act;
- Listed by the California Fish and Game Commission as Rare, Threatened, or Endangered;
- Are at the limits of their distribution range (southernmost, northernmost, westernmost extent); or
- The Type Locality occurs within the County (then only the Type Locality is considered sensitive).

Some taxa are considered rare or uncommon throughout California, as established by CNPS in its *Inventory of Rare and Endangered Plants of California*, sixth edition (CNPS 2001), even though more than ten populations are known from Ventura County, including Anacapa Islands and San Nicolas Island. Such taxa known to occur within Ventura County are included, but lack an “R” or “U” designation if there are more than the 5 or 10 populations, respectively. Currently there are **1,254**⁵ taxa (50.4% of the known county flora) included on this list of locally rare plants of Ventura County (including taxa that are rare statewide), present on the mainland and the two islands (Anacapa and San Nicolas). Another 181 (6.6% of the expected flora of 2,741 taxa) were appended that are likely to occur in the County but for which no voucher specimens or reliable locality data are available. These are included at the end of this list. Many of these potential additions are known to occur in adjacent counties and expected to occur in Ventura County. A total of 64 plants (2.6%) considered rare in Ventura County occur only on the Channel Islands (Anacapa and San Nicolas Islands) portion of the county. A number of taxa were deleted from this list when over ten occurrences were known to occur in Ventura County.

² Magney, David L. 2015. Checklist of Vascular Plants of Ventura County, California. David Magney Environmental Consulting, Ojai, California, published on www.venturaflora.com. Based on Magney's *A Flora of Ventura County: Annotated Catalogue of Vascular Plants*. Unpublished manuscript of 22 July 2015. David Magney Environmental Consulting, Ojai, California.

³ California Native Plant Society. 2001. *Inventory of Rare and Endangered Plants of California*. Sixth edition. (Special Publication No. 1.) Rare Plant Scientific Advisory Committee, David Tibor, Convening Editor, Sacramento, California. September.

⁴ California Native Plant Society. 2016. *Inventory of Rare and Endangered Plants of California*. (Online edition, v8-02.) 29 December 2016. Rare Plant Program, Sacramento, California.

⁵ This number is forty-seven (47) more taxa than included on the previous edition of this list.

This list was compiled as the results of extensive research of the flora of Ventura County. It is based on extensive field searches; examination of specimens collected by others housed at public herbaria; and published reports. The author began research on the Ventura County flora in the late 1970s.

To be published in the future separately, *Ventura County Rare Plants* will provide much more information about those plants included in this checklist, including: a brief description of the plant, habitat preferences, associated plant communities, elevation range, and blooming period. That publication will include additional information for each taxon, including complete scientific name, known synonyms, common name(s), habit and size, rarity status, months it is in bloom or identifiable, and general and specific locality data, with supporting voucher collection information. Each specimen cited for a specific location includes the name of the collector, the collection number (or collection date if no number was assigned), and the herbarium in which it is stored (some duplicate specimens have been deposited in more than one herbarium). Location information is provided at two levels: a general geographic area, and then specific locations.

This list should be considered the best available information at the time of publication, as our knowledge of the Ventura County flora is dynamic, and growing with each botanical survey or foray. This checklist will be updated periodically and revised according to all new verifiable information provided. Occurrences of vascular plants found in Ventura County that add to or could change the status of any plant listed here should be submitted to the author via CNPS (attention: David Magney) or via email to [david\(at\)magney\(dot\)org](mailto:david(at)magney(dot)org). Any lists submitted must be supported by voucher specimens that are deposited in a public herbarium, according to CNPS and California Botanical Society policies based on Ferren et al. (1995⁶).

Plants not included in CNPS's *Inventory*, or listed by federal and state agencies, that have more than ten populations in Ventura County will be dropped from this list, except for those plants:

- representing range limits, such as the westernmost limit of the taxons range; or
- the "Type Locality" sites ("Type Locality" sites are the sites from which the plant was originally collected and formally described from, and is represented by a "Type Specimen", for which a note occurs after the herbarium at which it is deposited as "Holotype" or "Isotype").

For those plants that are otherwise relatively common in Ventura County, only the populations that represent the limit of a plants range should be considered of concern (as sensitive), with the remaining population(s) noted to provide perspective, but not considered sensitive/rare for the purposes of this checklist. *Artemisia tridentata* var. *tridentata* is an example of this, where it should be considered of local concern when it occurs in the western portion of the Santa Clara River Valley (the limit of its range) while the populations in the Upper Sespe Creek watershed and the northern part of the county are not of concern from a rarity perspective.

Special-status species are plants that are either listed as endangered or threatened under the Federal or California Endangered Special Acts; or considered to be rare under the California Native Plant Protection Act; or considered to be rare (but not formally listed) by resource agencies, professional organizations (e.g. California Native Plant Society), and the scientific community. For the purposes of this checklist, special-status species are further defined in Table 1, Definitions of Special-Status Plant Species.

Listed species are those taxa that are formally listed as endangered or threatened by the federal government (e.g. U.S. Fish and Wildlife Service [USFWS]) pursuant to the national Endangered

⁶ Ferren, W.R., Jr., D.L. Magney, and T.A. Sholars. 1995. The Future of California Floristics and Systematics: Collecting Guidelines and Documentation Techniques. *Madroño* 42(2):197-210.

Species Act or as endangered, threatened, or rare (for plants only) by the State of California (i.e. California Fish and Game Commission) pursuant to the California Endangered Species Act or the California Native Plant Protection Act.

The CNDDDB Element Ranking system provides a numeric global and state ranking system for all special-status plant and wildlife species and rare habitats tracked by the CNDDDB. The global rank (G-rank) is a reflection of the overall condition of an element (species or natural community) throughout its global range. The state ranking (S-rank) is assigned much the same way as the global rank, except state ranks in California often also contain a threat designation attached to the S-rank. This Element Ranking system is defined below in Table 2, Natural Diversity Data Base Element Ranking System. Not all special-status species considered in this checklist are tracked by the CNDDDB, nor have global or state rarity ranking been given to them; therefore, the author has applied the rules described above to “rank” those special-status species lacking such ranking. Taxa for which Global and State rarity ranking have been devised here are followed by a “?” in parentheses, denoting tentative assignment.

Table 1. Definitions of Special-Status Plant Species

<ol style="list-style-type: none"> 1. Plants legally protected under the California and Federal Endangered Species Acts or under other regulations. 2. Plants considered sufficiently rare by the scientific community to qualify for such listing; or 3. Plants considered to be sensitive because they are unique, declining regionally or locally, or are at the extent of their natural range.
Special-Status Plant Species
<ul style="list-style-type: none"> ◆ Plants listed or proposed for listing as threatened or endangered under the Federal Endangered Species Act (50 CFR 17.12 for listed plants and various notices in the Federal Register for proposed species). ◆ Plants that are Category 1 or 2 (species of special concern) candidates for possible future listing as threatened or endangered under the Federal Endangered Species Act (55 CFR 6184, February 21, 1990). ◆ Plants that meet the definitions of rare or endangered species under the CEQA (<i>State CEQA Guidelines</i>, Section 15380). ◆ Plants considered by the CNPS to be "rare, threatened, or endangered" in California (Lists 1A, 1B, and 2 in CNPS [2001]⁷). ◆ Plants listed by CNPS as plants about which we need more information and plants of limited distribution (Lists 3 and 4 in CNPS [2001]). ◆ Plants listed or proposed for listing by the State of California as threatened or endangered under the California Endangered Species Act (14 CCR 670.5). ◆ Plants listed under the California Native Plant Protection Act (California Fish and Game Code 1900 <i>et seq.</i>). ◆ Plants considered sensitive by other federal agencies (i.e. U.S. Forest Service, Bureau of Land Management) or state and local agencies or jurisdictions. ◆ Plants considered sensitive or unique by the scientific community or occurring at the limits of its natural range (<i>State CEQA Guidelines</i>, Appendix G).

CNPS’s *Inventory of Rare and Endangered Plants of California*⁸ categorizes rare California plants into one of five lists (1A, 1B, 2, 3, & 4) representing the five levels of species status, one of which is assigned to a sensitive species to indicate its status of rarity or endangerment and distribution. A CNPS List is a more general designation than the three separate sets of information provided in a CNPS R-E-D Code (see the CNPS *Inventory* for definitions). However, the CNPS List is a significant designation in terms of a species’ overall status throughout all of California, and it works well in conjunction to the specifications of the R-E-D Code. The CNPS R-E-D Code is a three-numbered numeric ranking, which is assigned to a special-status species, consisting of one number (1, 2, or 3) for each of the three

⁷ California Native Plant Society. 2001. *Inventory of Rare and Endangered Plants of California*. Sixth Edition. Sacramento, California. September.

⁸ *Ibid.*

categories (Rarity-Endangerment-Distribution). Each number accurately describes the species' population levels and distribution patterns within each category.

As described for the NDDDB ranking, not all special-status species (most) considered in this checklist are tracked by CNPS, nor have R-E-D codes been given to them; however, the author has applied the rules described above to "rank" those special-status species lacking such ranking to either "rare" or "uncommon"; however, these rankings are not included in the checklist. Rather the occurrence rankings for each are provided in the *Ventura County Rare Plants* and in the *Flora of Ventura County* to be published in 2006 by the author.

The large number of taxa on this list is the result of several factors:

1. Development in Ventura County has eliminated a majority of the natural vegetation in the southern half of the County, eliminating many occurrences of native plant species;
2. A number of taxa found nowhere else are present in Ventura County, local endemics, and several of these are listed as threatened or endangered by either the California Department of Fish and Game or the U.S. Fish and Wildlife Service;
3. Ventura County is geographically situated such that floral influences from the north, south, and east enter the County at its edges (limits of some species' ranges);
4. Anacapa and San Nicolas Islands support many species found only on the California Channel Islands, including island endemics;
5. Ventura County is topographically and climatically diverse, providing numerous habitats for uncommon and rare species; and
6. Botanical surveys have not been conducted systematically everywhere in the County. In other words, the flora of Ventura County is not fully understood or documented, and additional populations of a number of the plants listed below likely occur in the County, we just aren't aware of them yet. Regardless, significant collecting has occurred in the County over the last 150 years, and the author has a reasonably good understanding of the flora.

This list was compiled according to definitions under the California Environmental Quality Act (CEQA) under Initial Study Checklist Section 6, Subsections A and E. Projects reviewed under CEQA should consider impacts to one or more of the species included in this checklist as potentially significant. Generally, if a project would impact a population of one or more of the plants listed herein, that/those impact(s) should be considered significant unless substantial evidence is provided that may support an alternate conclusion.

What significance does a list of locally rare species have under CEQA?

The following answer is provided by John Buse, Esq., of the Environmental Defense Center of Ventura, California⁹. The CEQA Guidelines provide that a lead agency shall find that a project may have a significant effect on the environment if the project "... has the potential to ... reduce the number or restrict the range of an endangered, rare or threatened species ...". Guidelines §15065(a). In addition, the CEQA Guidelines Appendix G Environmental Checklist Form considers whether a project would "have a substantial adverse effect, either directly or through habitat modifications, on any species identified as a candidate, sensitive, or special status species in local or regional plans, policies, or regulations ...".

⁹ Buse, John, Esq., Environmental Defense Center, memorandum to David Magney of CNPS dated 14 September 2002.

Table 2. Natural Diversity Database Element Ranking System

Global Ranking (G)	
G1	Less than 6 viable element occurrences (populations for species) OR less than 1,000 individuals OR less than 809.4 hectares (ha) (2,000 acres [ac]).
G2	6 to 20 element occurrences OR 809.4 to 4,047 ha (2,000 to 10,000 ac).
G3	21 to 100 element occurrences OR 3,000 to 10,000 individuals OR 4,047 to 20,235 ha (10,000 to 50,000 ac).
G4	Apparently secure; this rank is clearly lower than G3 but factors exist to cause some concern (i.e. there is some threat, or somewhat narrow habitat).
G5	Population or stand demonstrably secure to ineradicable due to being commonly found in the world.
GH	All sites are historic ; the element has not been seen for at least 20 years, but suitable habitat still exists.
GX	All sites are extirpated ; this element is extinct in the wild.
GXC	Extinct in the wild; exists in cultivation.
G1Q	The element is very rare, but there is a taxonomic question associated with it.
Subspecies Level	
Subspecies receive a T-rank attached to the G-rank. With the subspecies, the G-rank reflects the condition of the entire <u>species</u> , whereas the T-rank reflects the global situation of just the <u>subspecies</u> or <u>variety</u> . For example: <i>Chorizanthe robusta</i> var. <i>hartwegii</i> . This plant is ranked G2T1. The G-rank refers to the whole species range (i.e. <i>Chorizanthe robusta</i> , whereas the T-rank refers only to the global condition of var. <i>hartwegii</i> .	
State Ranking (S)	
S1	Less than 6 element occurrences OR less than 1,000 individuals OR less than 809.4 ha (2,000 ac). S1.1 = very threatened S1.2 = threatened S1.3 = no current threats known
S2	6 to 20 element occurrences OR 3,000 individuals OR 809.4 to 4,047 ha (2,000 to 10,000 ac). S2.1 = very threatened S2.2 = threatened S2.3 = no current threats known..
S3	21 to 100 element occurrences OR 3,000 to 10,000 individuals OR 4,047 to 20,235 ha (10,000 to 50,000 ac). S3.1 = very threatened S3.2 = threatened S3.3 = no current threats known
S4	Apparently secure within California; this rank is clearly lower than S3 but factors exist to cause some concern (i.e. there is some threat, or somewhat narrow habitat). NO THREAT RANK.
S5	Demonstrably secure to ineradicable in California. NO THREAT RANK.
SH	All California sites are historic ; the element has not been seen for at least 20 years, but suitable habitat still exists.
SX	All California sites are extirpated ; this element is extinct in the wild.

Notes: 1. Other considerations used when ranking a species or natural community include the pattern of distribution of the element on the landscape, fragmentation of the population/stands, and historical extent as compared to its modern range. It is important to take a bird's eye or aerial view when ranking sensitive elements rather than simply counting element occurrences.

2. Uncertainty about the rank of an element is expressed in two major ways: by expressing the rank as a range of values (e.g., S2S3 means the rank is somewhere between S2 and S3), and by adding a ? to the rank (e.g. S2?). This represents more certainty than S2S3, but less than S2. (CNDDDB 2002.)

According to the CEQA Guidelines, a species is considered "rare" when either:

- (A) Although not presently threatened with extinction, the species is existing in such small numbers throughout all or a significant portion of its range that it may become endangered if its environment worsens; or

- (B) The species is likely to become endangered within the foreseeable future throughout all or a significant portion of its range and may be considered “threatened” as that term is used in the Federal Endangered Species Act. Guidelines §15380(b)(2).

Species already listed under the California or federal ESA shall be presumed to be endangered, rare, or threatened. Guidelines §15380(c). A species not currently listed shall nevertheless be considered to be endangered, threatened, or rare if it meets the criteria in the CEQA definitions of “endangered” or “rare”. The term “sensitive” species, which appears in the Appendix G checklist, is not defined in CEQA.

If a species is considered locally rare due to its limited occurrence within a political boundary, such as the County of Ventura, and if the species’ local population constitutes a significant portion of its range, the species must be considered a rare species under CEQA. The mere placement of a species on a list of locally rare species is probably not enough to meet the CEQA criteria for endangered, threatened, or rare species. However, if the list contains some additional explanation indicating why the species meets the CEQA criteria, such as the fact that the local population constitutes a significant portion of the species’ range, the list should provide substantial evidence of rarity.

If the CEQA criteria are satisfied, it is irrelevant that a species is relatively common in other locations. For example, the Pacific Coast populations of the Snowy Plover are listed as threatened under the federal ESA, despite the fact that inland populations are relatively common and are not protected. The existence of the non-listed populations does not diminish the Snowy Plover’s status as a endangered, threatened, or rare species under CEQA. By extension, if the Pacific Coast populations of the Snowy Plover were not listed as threatened, these populations would still be considered endangered, threatened, or rare under CEQA. Accordingly, the special status for Snowy Plover in Ventura County under CEQA would still apply even if Snowy Plover was relatively common in, for example, Mono County. Assertions implying that a species necessarily does not warrant inclusion on a list of locally rare species if it is common elsewhere in California simply because it occurs rarely in Ventura County within a political boundary are incorrect. As the Snowy Plover example indicates, there will be instances when a locally rare species must be considered rare under CEQA despite the species’ common occurrence elsewhere in California.

Snowy Plover on the Pacific Coast is protected under the federal ESA based on the concept of a “distinct population segment” (DPS). Something similar to the DPS concept could be used to determine whether a locally rare species is, in fact, endangered, threatened, or rare under CEQA. The federal ESA allows a DPS, defined according to geographic or reproductive isolation, to be treated as a “species”. Therefore, as in the Snowy Plover example, a DPS can be listed even though the populations of the taxonomic species are common elsewhere. CEQA does not preclude use of the DPS concept to assist in understanding whether a species is endangered, threatened, or rare based on its local rarity; on the contrary, the CEQA Guidelines definition of “rare” appears to invite the consideration of similar circumstances that would inform the determination of a DPS under the federal ESA.

Under CEQA, lead agencies have considerable discretion in determining whether a species should be considered rare or sensitive. See, for example, the *State CEQA Guidelines* Appendix G checklist cited above, which indicates that lead agencies may designate candidate, sensitive, or special-status species in local or regional plans, policies, or regulations. A list of locally rare or sensitive species, if it is developed based on evidence that the local rarity meets the CEQA criteria for rarity, will effectively establish a rebuttable presumption of significance for species that may be adversely affected by a project. In this respect, a list of locally rare species as presented below will function in a manner similar to the threshold of significance that a lead agency may establish. CEQA requires, however, that thresholds of significance for general use in a lead agency’s environmental review process “must be

adopted by ordinance, resolution, rule, or regulation, and developed through a public review process and be supported by substantial evidence.” Guidelines §15064.7. For a list of locally rare or sensitive species to function as a set of thresholds of significance, therefore, the list should be adopted through a public review process. Even if the list is not adopted through a public review process, it will establish substantial evidence of rarity if it is accompanied by additional information showing, for example, that the local occurrences of a listed species constitute a substantial portion of the species’ range.

CNPS believes that this list of locally rare plants meets the definitions of rarity, at least locally, to satisfy consideration under CEQA. This checklist is supported by substantial evidence in the files of the author and data obtained from public herbaria and knowledgeable local botanists. Many of the taxa listed in this checklist are also listed by CNPS as rare or sensitive statewide, as well as those taxa formally listed under the California and/or federal ESA.

This checklist is updated regularly based on new information on the Ventura County flora. Species are added or deleted from this list as the new data warrant; therefore, be sure to obtain the most up-to-date version of this checklist. For example, for this update, compared to the 22 July 2015 (21st) edition (previous), 21 taxa were added, 29 were dropped (listed at end of this list), 6 had some sort of name change or a spelling error corrected, 22 had their rarity status changed (usually lowered from Rare to Uncommon), and 0 taxa were added to the “expected to occur” list. Future changes to this list will likely be a result in taxonomic changes. However, information on the flora is continually expanding with every botanical survey conducted, which may result in additional occurrences of plants on this list, or taxa not previously known to occur in Ventura County.

The most up-to-date version can be downloaded (as a PDF) from the Channel Islands Chapter CNPS website at www.cnpsci.org, or by contacting the author directly. Please send your notes on corrections, errors, and plant populations/occurrences you are aware of that may not be on this checklist to the author: David Magney, P.O. Box 1346, Ojai, CA 93024-1346 or via email at [david\(at\)magney\(dot\)org](mailto:david(at)magney(dot)org). Also contact the author if you need any specific locality data on any particular taxon included in this checklist.

Checklist of Rare Plants

Scientific Name¹⁰

Abies concolor (Gordon & Glendinning) Lindl. Ex Hildebr.
Abronia maritima Nutt. ex S. Watson
Abronia maritima Nutt. ex S. Watson X *A. umbellata* Lam.
Abronia neurophylla Standl.
Abronia pogonantha Heimerl
Abronia turbinata Torr. ex S. Watson

Common Name¹¹

California White Fir (S, LPNF¹²)
Red or Sticky Sand-verbena (S, CNPS 4.2)
Hybrid Sand-verbena (R)
Beach Sand-verbena (R)
Desert Sand-verbena (R)
Turbinate Sand-verbena (R)

¹⁰ Scientific name: The complete scientific name is provided for each taxon and consists of the genus, species, and author (person who formally described and named the plant). Underlined entries indicate taxa found only on the Channel Islands (Anacapa or San Nicolas Islands).

¹¹ Common names are given for all taxa, many of which are invented by the author as no common name has been identified otherwise. “R”, “U”, “Limits”, or “Type” in parentheses indicated the category of rarity: R = rare (formally listed by USFWS, CDFG, CNPS, or with 5 or fewer occurrences in Ventura County); U = uncommon (with 6 to 10 occurrences in Ventura County); Limits = indicate taxon reaches its distribution limits in Ventura County; Type = type locality is within Ventura County.

¹² LPNF = Los Padres National Forest Sensitive Plant List

<u>Scientific Name</u>	<u>Common Name</u>
<i>Abronia villosa</i> S. Watson var. <i>aurita</i> (Abrams) Jeps.	Woolly Sand-verbena (R, CNPS 1B.1)
<i>Acamptopappus sphaerocephalus</i> (Har. & A. Gray) A. Gray var. <i>sphaerocephalus</i>	Rayless Goldenhead (R)
<i>Acanthomintha obovata</i> var. <i>cordata</i> Jokerst	Heartleaf Thornmint (S, CNPS 4.2)
<i>Acanthoscyphus parishii</i> var. <i>abramsii</i> (E.A. McGregor) Reveal	Abrams Spineflower (U, CNPS 1B.2)
<i>Acanthoscyphus</i> [<i>Oxytheca</i>] <i>parishii</i> (Parry) Small var. <i>parishii</i>	Parish's <i>Oxytheca</i> (R, CNPS 4.2)
<i>Acer negundo</i> var. <i>californicum</i> (Torrey & A. Gray) Sarg.	Box Elder (R)
<u><i>Achillea millefolium</i> var. <i>arenicola</i> (Heller) Nobs in Ferris</u>	<u>Common Island White Yarrow (U)</u>
<i>Achillea millefolium</i> var. <i>californica</i> (Pollard) Jepson	California White Yarrow (U)
<i>Achillea millefolium</i> var. <i>occidentale</i> DC	Woolly White Yarrow (U)
<i>Achillea millefolium</i> var. <i>pacifica</i> (Rydb.) G.N. Jones	Pacific White Yarrow (R)
<u><i>Acmispon argophyllum</i> ssp. <i>argenteus</i> (Dunkle) Brouillet</u>	<u>Silver Deervetch (U)</u>
<u><i>Acmispon argophyllum</i> ssp. <i>nivius</i> (E. Greene) Brouillet</u>	<u>Santa Cruz Island Silverhosackia (R)</u>
<u><i>Acmispon dendroideus</i> (Greene) Brouillet var. <i>dendroideus</i></u>	<u>Island Broom (R)</u>
<u><i>Acmispon dendroideus</i> var. <i>veatchii</i> (Greene) Brouillet</u>	<u>San Miguel Island Deerweed (R)</u>
<i>Acmispon denticulatus</i> (Drew) D.D. Sokoloff	White Lotus (U)
<i>Acmispon glaber</i> var. <i>brevialetus</i> (Ottley) Brouillet	Deerweed (R)
<i>Acmispon heermanii</i> (Durand & Hilg.) Brouillet var. <i>heermanii</i>	Heerman Lotus or Hosackia (R)
<i>Acmispon heermanii</i> var. <i>orbicularis</i> (Gray) Brouillet	Heerman Lotus (R)
<i>Acmispon junceus</i> (Benth.) Brouillet var. <i>junceus</i>	Rush Lotus (R)
<i>Acmispon micranthus</i> (Torrey & A. Gray) Brouillet	Grab Hosackia or Lotus (R)
<i>Acmispon nevadensis</i> var. <i>davidsonii</i> (Greene) Brouillet	Suphur-flowered Hosackia (U)
<i>Acmispon nevadensis</i> (S. Watson) Brouillet var. <i>nevadensis</i>	Sierra Nevada Hosackia (R)
<i>Acmispon parviflorus</i> (Benth.) Brouillet	Tiny Lotus (R)
<i>Acmispon prostratus</i> (T. & G.) Brouillet	Nuttall's Lotus (R, 1B.1)
<i>Adenostoma sparsifolium</i> Torrey	Red Shank, Ribbon-bush (U)
<i>Aesculus californica</i> (Spach) Nutt.	California Buckeye (R)
<i>Agoseris elata</i> (Nuttall) E. Greene	Tall Mountain Dandelion (R)
<i>Agrostis hallii</i> Vasey	Hall's Bentgrass (R)
<i>Agrostis pallens</i> Trin.	Thingrass (U)
<i>Alisma plantago-aquaticum</i> L.	Common or Broadleaf Water-plantain (R)
<i>Allium amplexans</i> Torrey	Narrowleaf Onion (R)
<i>Allium burlewii</i> A. Davidson	Burlew Onion (U)
<i>Allium cratericola</i> Eastw.	Cratered Onion (R)
<i>Allium denticulatum</i> (Traub) D. McNeal	Dentate Fringed Onion (R)
<i>Allium fimbriatum</i> var. <i>mohavense</i> Jepson	Mojave Onion (R)
<i>Allium haemaetochiton</i> S. Watson	Red-skinned Onion (U)
<i>Allium howellii</i> var. <i>clokeyi</i> Traub	Mount Piños Onion (Type, CNPS 1B.3)
<i>Allium lacunosum</i> var. <i>davisiae</i> (M.E. Jones) D. McNeal	Davis Onion (R, W Limits)
<i>Allium lacunosum</i> S. Watson var. <i>lacunosum</i>	Pitted Onion (R)
<i>Allium monticola</i> Davidson	Mountain Onion (R)
<i>Allium parryi</i> S. Watson	Parry Fringed Onion (R)
<i>Allium parvum</i> Kellogg	Small Onion (R)
<i>Allium peninsulare</i> Lemmon var. <i>peninsulare</i>	Peninsular Onion (U)
<i>Allium praecox</i> Brandege	Early Onion (R)
<i>Allium sanbornii</i> Alph. Wood var. <i>sanbornii</i>	Sanborn Onion (R)
<i>Allium tribracteatum</i> Torrey	Three-bracted Onion (R)
<i>Allium vineale</i> L.	Wild Garlic (R)
<i>Allophyllum divaricatum</i> (Nuttall) A.D. Grant & V. Grant	Divaricate Allophyllum (R)
<i>Allophyllum gilioides</i> (Bentham) A.D. Grant & V. Grant ssp. <i>gilioides</i>	Stragglng Gilia (R)
<i>Allophyllum integrifolium</i> (Brand) A.D. Grant & V. Grant	Sticky Allophyllum (R)
<i>Alnus incana</i> ssp. <i>tenuifolia</i> (Nuttall) Breitung	Mountain Alder (R, Disjunct, S Limits)
<i>Alopecurus carolinianus</i> Walter	Carolina Foxtail (R)
<i>Alopecurus saccatus</i> Vasey	Pacific Foxtail (R)
<i>Amaranthus californicus</i> (Moq.) S. Watson	California Amaranth (R)
<i>Amaranthus palmeri</i> S. Watson ssp. <i>palmeri</i>	Palmer Amaranth (U)
<i>Amaranthus powellii</i> ssp. <i>bouchenii</i> (Thell.) Costea & Carretero	Bouchenl Amaranth (R)
<i>Amaranthus powellii</i> S. Watson ssp. <i>powellii</i>	Powell Amaranth (U)

Scientific Name

Common Name

<i>Ambrosia confertiflora</i> DC.	Weak-leaved Burweed or Bur-sage (R)
<i>Ambrosia dumosa</i> (A. Gray) Payne	White Bur-sage (R)
<i>Ambrosia salsola</i> var. <i>fasciculata</i> (A. Nelson) Stother & B.G. Baldwin	White Burrobrush (R)
<i>Ambrosia salsola</i> (T.&G. Ex G.) Stother & B.G. Baldwin var. <i>salsola</i>	Burobrush (R)
<i>Amelanchier alnifolia</i> var. <i>pumila</i> (Nuttall) Nelson	Alderleaf Service-berry (R)
<i>Amelanchier pallida</i> E. Greene	Western or Pallid Service-berry (R, Type)
<i>Amelanchier utahensis</i> Koehne	Utah Service-berry (R)
<i>Ammannia coccinea</i> Rottb.	Long-leaved or Purple Ammannia (R)
<i>Ammannia robusta</i> Heer & Regel	Grand Redstem (R)
<i>Amsinckia douglasiana</i> A. DC.	Douglas Fiddleneck (R, CNPS 4.2)
<i>Amsinckia eastwoodae</i> J.F. Macbr.	Elegant Fiddleneck (R)
<i>Amsinckia spectabilis</i> Fischer & C. Meyer var. <i>spectabilis</i>	Showy Fiddleneck_(U)
<i>Amsinckia tessellata</i> var. <i>gloriosa</i> (Suksd.) Hoover	Glorious Fiddleneck (U)
<i>Amsinckia tessellata</i> Gray var. <i>tessellata</i>	Devil's Lettuce, Tessellate Fiddleneck (U)
<i>Amsinckia vernicosa</i> Hook. & Arn. var. <i>vernicosa</i>	Vernal or Green Fiddleneck (R)
<i>Andropogon glomeratus</i> var. <i>pumilus</i> Vasey ex Dewey	Bushy Bluestem (R)
<i>Andropogon glomeratus</i> var. <i>scabriglumis</i> C.S. Campbell	Southwestern Bushy Bluestem (U)
<i>Androsace elongata</i> ssp. <i>acuta</i> (E. Greene) G. Robb.	Rock-jasmine (R)
<i>Antennaria dimorpha</i> (Nuttall) Torrey & A. Gray	Low Everlasting (R)
<i>Anthoxanthum occidentale</i> (Buckley) Veldkamp	California Sweet Grass (R)
<i>Antirrhinum coulterianum</i> Benth. ssp. <i>coulterianum</i>	White Snapdragon (U)
<u><i>Antirrhinum nuttallianum</i> Benth. ssp. <i>nuttallianum</i></u>	<u>Nuttall Snapdragon (R)</u>
<i>Antirrhinum nuttallianum</i> ssp. <i>subsessile</i> (A. Gray) D. Thompson	Nuttall Snapdragon (R)
<i>Antirrhinum ovatum</i> Eastwood	Oval-leaved Snapdragon (R, CNPS 4.2)
<i>Aphanes occidentalis</i> (Nuttall) Rydb.	Dew-cup, Lady's Mantle (R)
<i>Aphanisma blitoides</i> Moq.	Aphanisma (R, CNPS 1B.2)
<i>Apocynum androsaemifolium</i> L.	Bitter Dogbane (R)
<i>Apocynum Xmedium</i> E. Greene (A. <i>androsaemifolium</i> ssp. <i>a.</i> var. <i>incanum</i> X A. <i>cannabinum</i> var. <i>hypericifolium</i>)	Bitter Dogbane (R)
<i>Aquilegia eximia</i> Van Houtte ex Planchon	Van Houtte Columbine (R)
<i>Aquilegia formosa</i> var. <i>truncata</i> (Fischer & C.A. Meyer) Baker	Truncate Crimson Columbine (U)
<i>Aralia californica</i> S. Watson	Elk Clover, Spikenard (R)
<i>Arbutus menziesii</i> Pursh	Pacific Madrone (U)
<i>Arctostaphylos canescens</i> Eastw.	Hoary Manzanita (R)
<i>Arctostaphylos glandulosa</i> ssp. <i>adamsii</i> (Munz) Munz	Adams Eastwood Manzanita (R)
<i>Arctostaphylos glandulosa</i> Eastw. X.A. <i>glauca</i> Lindley	Eastwood-Bigberry Manzanita Hybrid (R)
<i>Arctostaphylos patula</i> Greene	Greenleaf Manzanita (R)
<i>Argemone corymbosa</i> E. Greene ssp. <i>corymbosa</i>	Desert Prickly Poppy (R)
<i>Argemone munita</i> ssp. <i>rotundata</i> (Rydberg) G. B. Ownbey	Prickly Poppy (R)
<i>Argentina egedii</i> (Wormsk.) Rydb. ssp. <i>egedii</i>	Pacific Coast Cinquifol or Silverweed (R)
<i>Aristida adscensionis</i> L.	Sixweeks Threeawn Grass (R)
<i>Aristida divaricata</i> Humb. & Bonpl. ex Willd.	Poverty Threeawn Grass (R)
<i>Aristida purpurea</i> Nuttall var. <i>purpurea</i>	Purple Three-awn Grass (R)
<i>Aristida ternipes</i> var. <i>hamulosa</i> (Henrard) J.S. Trent	Hook Threeawn Grass (R)
<i>Arnica discoidea</i> Benth. var. <i>discoidea</i>	Rayless or Discoid Arnica (R)
<i>Ambrosia artemisiifolia</i> L.	Common Ragweed (R)
<i>Artemisia ludoviciana</i> Nuttall ssp. <i>ludoviciana</i>	Silver or Western Mugwort (R)
<u><i>Artemisia nesiotica</i> Raven</u>	<u>Island Sagebrush (R)</u>
<i>Artemisia tridentata</i> ssp. <i>parishii</i> (Gray) H.M. Hall & Clements	Parish Great Basin Sagebrush (R, W Limits)
<i>Artemisia tridentata</i> ssp. <i>vaseyana</i> (Rydb.) Beetle	Vasey Great Basin or Mountain Sagebrush (U)
<i>Arthrocnemum [Salicornia] subterminalis</i> (Parish) Standley	Common or Parish Glasswort (U)
<i>Asclepias erosa</i> Torrey	Desert Milkweed (U)
<i>Asclepias vestita</i> Hook. & Arn.	Woolly Milkweed (R)
<i>Asplenium vespertinum</i> Maxon	Western Spleenwort (R, CNPS 4.2)
<i>Aster ascendens</i> Lindley	Long-leaved Aster (R)
<i>Aster chilensis</i> Nees	Common California Aster (U)
<i>Aster lanceolatus</i> ssp. <i>hesperius</i> (Gray) Semple & Chmielewski	Siskiyou Aster (R)
<i>Aster lentus</i> E. Greene	Suisun Marsh Aster (R)

Scientific Name

Astragalus asymmetricus E. Sheldon
Astragalus brauntonii Parish
Astragalus coccineus Brandege
Astragalus curtipes A. Gray
Astragalus didymocarpus Hook. & Arn. var. *didymocarpus*
Astragalus didymocarpus var. *dispermus* (A. Gray) Jepson
Astragalus didymocarpus var. *milesianus* (Rydb.) Jeps.
Astragalus didymocarpus var. *obispoensis* (Rydb.) Jeps.
Astragalus douglasii var. *parishii* (Gray) M.E. Jones
Astragalus filipes Gray
Astragalus gambelianus E. Sheldon
Astragalus lentiginosus Hook. var. *diphysus*
Astragalus lentiginosus Hooker var. *fremontii* (A. Gray) S. Watson
Astragalus lentiginosus var. *nigricalycis* M.E. Jones
Astragalus lentiginosus var. *sierrae* M.E. Jones
Astragalus leucolobus M.E. Jones
Astragalus leucopsis Torrey var. *leucopsis*
Astragalus macrodon (Hook. & Arn.) Gray
Astragalus miguelsenis Greene
Astragalus nuttallii (Torrey & A. Gray) J.T. Howell var. *nuttallii*
Astragalus oxyphysus Gray
Astragalus pomonensis M.E. Jones
Astragalus purshii Douglas ex Hooker var. *purshii*
Astragalus pycnostachyus var. *lanosissimus* (Rydb.) Munz
Astragalus traskiae Eastwood
Astragalus trichopodus (Nutt.) Gray var. *trichopodus*
Astragalus whitneyi Gray var. *whitneyi*
Astragalus whitneyi var. *pinosus* Elmer
Atriplex argentea Nutt. var. *argentea*
Atriplex argentea var. *expansa* (S. Watson) S.L. Welsh & Reveal
Atriplex argentea var. *mohavensis* (M.E. Jones) S.L. Welsh
Atriplex canescens (Pursh) Nutt. var. *laciniata* Parish in Jepson
Atriplex linearis S. Watson
Atriplex coulteri (Moq.) D. Dietr.
Atriplex dioica Raf.
Atriplex lentiformis (Torrey) S. Watson ssp. *lentiformis*
Atriplex pacifica Nelson
Atriplex parishii S. Watson var. *parishii*
Atriplex polycarpa (Torrey) S. Watson
Atriplex prostrata Boucher ex de Candolle
Atriplex serenana var. *davidsonii* (Standley) Munz
Atriplex serenana Nelson var. *serenana*
Atriplex watsonii Nelson
Azolla filiculoides Lam.
Baccharis salicina Torrey & A. Gray
Baccharis malibuensis Beauchamp & Henrickson
Baccharis plummerae Gray ssp. *plummerae*
Bahiopsis laciniata (A. Gray) E.E. Schill.
Batis maritima L.
Berberis dictyota Jeps.
Berberis pinnata ssp. *insularis* Munz
Berberis pinnata Lagasca ssp. *pinnata*
Bergia texana (Hook.) Seub. ex Walp.
Berula erecta (Huds.) Coville

Common Name

Cockeyed Milkvetch (R)
Braunton Milkvetch (R, CNPS 1B.1, FE¹³)
Scarlet Milkvetch (R)
San Luis Obispo Milkvetch (R)
Two-seeded Milkvetch (U)
Disperse Two-seeded Milkvetch (R)
South Coast Two-seeded Milkvetch (R, CNPS 1B.2)
San Luis Obispo Two-seeded Milkvetch (R)
Parish Milkvetch (R)
Thread-leaved Locoweed (U)
Dwarf Locoweed (U)
Freckled Locoweed (R)
Fremont Spotted Locoweed (U)
Black-sepaled Freckled Locoweed (R)
Bear Valley Milkvetch (R, CNPS 1B.2)
Bear Valley Woollypod (R, CNPS 1B.2)
Coast Rattleweed (R)
Salinas Valley Milkvetch (R, CNPS 4.3)
San Miguel Milkvetch (R, CNPS 4.3)
Nuttall's Milkvetch (R, CNPS 4.2)
Robust Milkvetch (R)
Pomona Locoweed (R)
Pursh's Woollypod Milkvetch (R)
Ventura Marsh Milkvetch (R, CNPS 1B.1, FE, SE¹⁴)
Trask Locoweed or Milkvetch (R, CNPS 1B.2)
Three-pod Milkvetch (U)
Whitney Locoweed (R)
Mount Pinos Locoweed (R, Type)
Siversscale (R)
Broad Siversscale (R)
Mojave Siversscale (R)
Caleb Saltbush (R)
Slenderleaf Saltbush (R)
Coulter Saltbush (R, CNPS 1B.2)
Thickleaf Orach (R)
Big Saltbush, Quailbrush (W Limits)
South Coast Saltbush (R, CNPS 1B.2)
Parish Brittscale (R, CNPS 1B)
Common Saltbush, Allscale (U)
Spearscale (U)
Davidson Bractscale (R, CNPS 1B.2)
Bractscale (R)
Matscale (R)
Duckweed Fern (U)
Emory Baccharis (R)
Malibu Baccharis (R, CNPS 1B.1)
Plummer Baccharis (CNPS 4.3)
San Diego County Viguiera (R)
Saltwort, Beachwort (R)
Dull-leaf Barberry (R)
Island Barberry (R, FE, SE, CNPS 1B.1)
Pinnate-leaved Barberry (R)
Texas Bergia (R)
Cutleaf Water-parsnip (U)

¹³ FE = Federally listed Endangered.

¹⁴ SE = State listed Endangered

Scientific Name

Bidens frondosa L.
Bidens laevis (L.) Britton, Sterns & Pogg.
Boechera breweri (S. Watson) Al-Shehbaz ssp. *breweri*
Boechera californica (Rollins) Windham & Al-Shehbaz
Boechera repanda (S. Watson) Al-Shehbaz
Boechera retrofracta (Graham) A. Löve & D. Löve
Boechera xylopoda Windham & Al-Shehbaz
Boerhavia coccinea Mill.
Bolboschoenous maritimus X *B. robustus*
Bolboschoenous robustus (Pursh) Soják, Čas. Nár.
Boschniakia strobilacea Gray
Bothriochloa barbinodis (Lagasca) Herter
Botrychium simplex E. Hitchc.
Boykinia occidentalis T. & G.
Boykinia rotundifolia C. Parry
Brickellia californica (T. & G.) Gray X *B. nevinii* Gray
Brickellia desertorum Coville
Brickellia multiflora Kellogg
Brodiaea coronaria (Salisbury) Jepson ssp. *coronaria*
Brodiaea jolonensis Eastw.
Brodiaea terrestris ssp. *kernensis* (Hoover) Niehaus
Bromus arizonicus (Shear) Stebbins
Bromus maritimus (Piper) Hitchcock
Bromus orcuttianus (Shear) A. Hitchc.
Bromus porteri (J.M. Coult.) Nash
Bromus pseudolaevipes Wagnon
Cakile edentula (Bigelow) Hooker ssp. *edentula*
Calandrinia breweri S. Watson
Californica macrophylla (H.& A.) Aldas., C. Navarro, P. Vargas, Ll. Saez & Aedo Largeleaf Filaree (R, CNPS 1B.1)
Callitriche marginata Torrey
Calochortus catalinae S. Watson
Calochortus clavatus S. Watson ssp. *clavatus*
Calochortus clavatus ssp. *gracilis* Ownby
Calochortus clavatus ssp. *pallidus* (Hoover) Munz
Calochortus coeruleus (Kellogg) S. Watson
Calochortus fimbriatus H.P. McDonald
Calochortus luteus Lindley
Calochortus palmeri S. Watson var. *palmeri*
Calochortus plummerae Greene
Calochortus rustvoldii Callahan
Calyptridium monospermum Greene
Calyptridium parryi Gray var. *parryi*
Calyptridium umbellatum (Torrey) Greene
Calystegia macrostegia ssp. *amplissima* Brummitt
Calystegia malacophylla ssp. *tomentella* var. *deltoides* (Greene) Munz Tehachapi Morning-glory (R)
Calystegia occidentalis ssp. *fulcrata* (Gray) Brummitt Western Morning-glory (R)
Calystegia occidentalis ssp. *occidentalis* var. *tomentella* (Greene) Brummitt Woolly Western Morning-glory (R)
Calystegia peirsonii (Abrams) Brummitt Peirson's Morning-glory (R, CNPS 4.2)
Calystegia sepium ssp. *binghamiae* (Greene) Brummitt Santa Barbara Morning-glory (R, CNPS 1A)
Calystegia soldanella (L.) R. Br. Beach Morning-glory (U)
Camissonia boothii ssp. *desertorum* (Munz) P.H. Raven Desert Shredding Primrose (R)
Camissonia boothii ssp. *rutila* (Davidson) Munz Booth's Shredding Primrose (R)
Camissonia brevipes (A. Gray) Raven ssp. *brevipes* Yellow Cups (R)
Camissonia campestris cf. ssp. *obispoensis* Raven San Luis Obispo Sun-cup (R)
Camissoniopsis cheiranthifolia (Sprengel) W.L. Wagner & Hoch ssp. *cheiranthifolia* Beach Primrose (R)
Camissonia contorta (Douglas) P.H. Raven Contorted Primrose (R)
Camissonia kernensis (Munz) P.H. Raven ssp. *kernensis* Kern County Primrose (R)

Common Name

Sticktight (R)
 Bur-marigold (R)
 Brewer Rockcress (R, S Limits)
 California Rockcress (R)
 Yosemite Rockcress (U)
 Holboell Rockcress (R)
 Desert Rockcress (R, SW Limits)
 Scarlet Spiderling (R)
 Hybrid Bulrush (R)
 Seashore Bulrush (R)
 California Ground Cone (R)
 Cane Bluestem (U)
 Least Moonwort, Little Grapefern (R)
 Santa Lucia Brookfoam (R)
 Roundleaved Boykinia (R)
 California-Nevin Brickellbush Hybrid (R)
 Desert Brickellbush (R)
 Gum-leaved Brickellbush (R)
 Crown Brodiaea (R)
 Dwarf Brodiaea (U)
 Harvest Brodiaea (U)
 Arizona Brome (U)
Maritime Brome (R)
 Orcutt Brome (R)
 Nodding Brome (R)
 Woodland Brome (R)
 American Searocket (R)
 Brewer Calandrinia (R, CNPS 4.2)
 California Water-starwort, Wallow Starwort (R)
 Catalina Mariposa Lily (CNPS 4.2)
 Club-haired Mariposa Lily (C, CNPS 4.3)
 Slender Club-haired Mariposa Lily (R, CNPS 1B.2)
 Pale Yellow Mariposa Lily (U)
 Beavertail-grass (R)
 Late-flowered Mariposa Lily (R, CNPS 1B.2)
 Gold Nuggets (R)
 Palmer Mariposa Lily (U, CNPS 1B.2)
 Plummer Mariposa Lily (S, CNPS 4.2)
 Rustvold's Mariposa Lily (R, CNPS 1.B)
 One-seeded Pussypaws (R)
 Parry Calyptridium (U)
 Pussypaws (U)
Island Morning-glory (R, CNPS 4.3)
 Tehachapi Morning-glory (R)
 Western Morning-glory (R)
 Woolly Western Morning-glory (R)
 Peirson's Morning-glory (R, CNPS 4.2)
 Santa Barbara Morning-glory (R, CNPS 1A)
 Beach Morning-glory (U)
 Desert Shredding Primrose (R)
 Booth's Shredding Primrose (R)
 Yellow Cups (R)
 San Luis Obispo Sun-cup (R)
Beach Primrose (R)
 Contorted Primrose (R)
 Kern County Primrose (R)

Scientific Name

Common Name

<i>Camissonia lacustris</i> P.H. Raven	Lakeside Primrose (R)
<i>Camissonia palmeri</i> (S. Watson) Raven	Palmer Primrose (U)
<i>Camissoniopsis confusa</i> (P.H. Raven) W.L. Wagner & Hoch	Confusing Primrose (U)
<i>Camissoniopsis ignota</i> (Jepson) W.L. Wagner & Hoch	Small Primrose (U)
<i>Camissoniopsis luciae</i> (P.H. Raven) W.L. Wagner & Hoch	Santa Lucia Sun-cup (R)
<i>Camissoniopsis pallida</i> (Abrams) W.L. Wagner & Hoch ssp. <i>pallida</i>	Pale Primrose (R)
<i>Cardamine breweri</i> S. Watson var. <i>breweri</i>	Brewer's Bitter-cress (R)
<i>Cardamine oligosperma</i> Torrey & Gray	Few-seeded Bitter-cress (U)
<i>Cardamine pachystigma</i> (S. Watson) Rollins var. <i>pachystigma</i>	Toothwort (R)
<i>Cardionema ramosissimum</i> (Weinm.) A. Mels. & J.F. Macbr.	Sand Mat (R)
<i>Carex abrupta</i> Mackenzie	Abrupt-beaked Sedge (R)
<i>Carex athrostachya</i> Olney	Slender-beaked Sedge (R)
<i>Carex aurea</i> Nuttall	Golden-fruited Sedge (R)
<i>Carex barbarae</i> Dewey	Santa Barbara Sedge (R)
<i>Carex bolanderi</i> Olney	Bolander Sedge (R)
<i>Carex brainerdii</i> Mack.	Brainerd Sedge (R)
<i>Carex densa</i> L. Bailey	Dense Sedge (R)
<i>Carex douglasii</i> Boott	Douglas Sedge (U)
<i>Carex filifolia</i> var. <i>erostrata</i> Kük.	Short-grass Sedge (R)
<i>Carex fracta</i> Mackenzie	Fragile-sheathed Sedge (R)
<i>Carex globosa</i> Boott	Round-fruited Sedge (R)
<i>Carex hassei</i> L. Bailey	Hasse Sedge (R)
<i>Carex lanuginosa</i> Michaux	Woolly Sedge (R)
<i>Carex multicaulis</i> L. Bailey	Many-stemmed Sedge (R)
<i>Carex nebrascensis</i> Dewey	Nebraska Sedge (R)
<i>Carex pansa</i> L. Bailey	Sand Dune Sedge (R)
<i>Carex pellita</i> Muhl. ex Willd.	Woolly Sedge (R)
<i>Carex rossii</i> Boott	Ross Sedge (R)
<i>Carex schottii</i> Dewey	Schott Sedge (R)
<i>Carex spissa</i> L.H. Bailey	San Diego Sedge (R)
<i>Carex subfusca</i> W. Boott	Brown Sedge (U)
<i>Carex triquetra</i> Boott	Triangular-fruited Sedge (R)
<i>Castilleja angustifolia</i> (Nuttall) G. Don	Desert Indian Paintbrush (R)
<i>Castilleja applegatei</i> ssp. <i>disticha</i> (Eastw.) Chuang & Heckard	Eastwood Indian Paintbrush (R)
<i>Castilleja applegatei</i> ssp. <i>pinetorum</i> (Fern.) Chuang & Heckard	Wavyleaf Indian Paintbrush (U)
<i>Castilleja attenuata</i> (Gray) Chuang & Heckard	Valley Tassels (R)
<i>Castilleja densiflora</i> (Benth.) Chuang & Heckard ssp. <i>densiflora</i>	Dense-flowered Owl's Clover (R)
<i>Castilleja lanata</i> ssp. <i>hololeuca</i> (Greene) Chuang & Heckard	White-felted Indian Paintbrush (R, CNPS 1B.2)
<i>Castilleja miniata</i> Hook. ssp. <i>miniata</i>	Great Red Indian Paintbrush (U)
<i>Castilleja minor</i> (A. Gray) A. Gray ssp. <i>minor</i>	Annual Indian Paintbrush (R)
<i>Castilleja mollis</i> Pennell	Soft-leaved Indian Paintbrush (R, CNPS 1B.1)
<i>Castilleja plagiotoma</i> A. Gray	Mojave Indian Paintbrush (R)
<i>Castilleja subinclusa</i> ssp. <i>franciscana</i> (Pennell) Chuang & Heckard	San Francisco Long-leaved Indian Paintbrush (U)
<i>Castilleja tenuis</i> (A.A. Heller) Chuang & Heckard	Bristle Owl's Clover (R)
<i>Caulanthus amplexicaulis</i> S. Watson var. <i>amplexicaulis</i>	Clasping-leaved Jewelflower (U)
<i>Caulanthus anceps</i> Payson	Lemmon Mustard (R)
<i>Caulanthus californicus</i> (S. Watson) Payson	California Jewelflower (R, FE)
<i>Caulanthus heterophyllus</i> (Nutt.) Payson var. <i>heterophyllus</i>	Different-leaved Jewelflower (U)
<i>Caulanthus inflatus</i> S. Watson	Desert Candle (R)
<i>Caulanthus lemmonii</i> S. Watson	Lemmon Jewelflower (U, CNPS 1B.2)
<i>Ceanothus cuneatus</i> var. <i>ramulosus</i> Greene	Coast Ceanothus (R)
<i>Ceanothus dentatus</i> T. & G.	Dentate Ceanothus (R)
<i>Ceanothus integerrimus</i> var. <i>macrothyrsus</i> (Torr.) Benson	Umpqua Deer Brush (R)
<i>Ceanothus megacarpus</i> var. <i>insularis</i> (Eastw.) Munz	Island Ceanothus (R)
<i>Ceanothus megacarpus</i> var. <i>pendulous</i> McMinn	Pendulous Bigpod Ceanothus (R)
<i>Ceanothus oliganthus</i> var. <i>sorediatus</i> (Hook. & Arn.) Hoover	Jim Brush (R)
<i>Ceanothus palmeri</i> Trel.	Palmer Ceanothus (U)

Scientific Name

Ceanothus papillosus T. & G. ssp. *papillosus*
Ceanothus tomentosus var. *olivaceus* Jepson
Ceanothus tomentosus Parry var. *tomentosus*
Ceanothus thrysiflorus Eschsch. ssp. *thrysiflorus*
Centaurea exaltatum (Griseb.) W. Wright ex Piper
Centaureum venustum (A. Gray) B.L. Robins. ssp. *venustum*
Centromadia parryi ssp. *australis* (Keck) B.G. Baldwin
Centrostegia thurberi var. *macrotheca*
Ceratophyllum demersum L.
Cercocarpus betuloides var. *blancheae* (C. Schneider) Little
Cercocarpus ledifolius var. *intermontanus* N. Holmgren
Cercocarpus ledifolius Nuttall var. *ledifolius*
Chaenactis artemisiifolia (Gray) Gray
Chaenactis fremontii A. Gray
Chaenactis glabriuscula var. *heterocarpha* (A. Gray) H.M. Hall
Chaenactis glabriuscula var. *lanosa* (DC.) H.M. Hall
Chaenactis glabriuscula var. *megacephala* A. Gray
Chaenactis glabriuscula var. *orcuttiana* (Greene) H.M. Hall
Chaenactis stevioides Hook. & Arn.
Chaenactis xantiana Gray
Chamaesyce melanadenia (Torrey) Millsp.
Chamaesyce micromera (Engelm.) Wooton & Standl.
Chamaesyce ocellata (Durand & Hilg.) Millsp. ssp. *ocellata*
Chamaesyce polycarpa var. *hirtella* (Boiss.) Parish
Chamaesyce polycarpa (Benth.) Millsp. var. *polycarpa*
Chamaesyce serpyllifolia (Pers.) Small ssp. *serpyllifolia*
Cheilanthes clevelandii D.C. Eaton.
Cheilanthes cooperae D.C. Eaton
Cheilanthes newberryi (D.C. Eaton) Domin
Chenopodium atrovirens Rydb.
Chenopodium berlandieri Moq. var. *zschackei* (Murr) Graebn.
Chenopodium desiccatum A. Nelson
Chenopodium fremontii S. Watson
Chenopodium pratericola Rydb.
Chloropyron maritimum Benth. ssp. *maritimum*
Chorizanthe blakleyi Hardham
Chorizanthe brevicornu Torr. var. *brevicornu*
Chorizanthe clevelandii C. Parry
Chorizanthe douglasii Benth.
Chorizanthe membranacea Benth.
Chorizanthe parryi var. *fernandina* (S. Watson) Jepson
Chorizanthe procumbens Nutt.
Chorizanthe staticoides forma *bracteata* Goodman
Chorizanthe uniaristata T. & G.
Chorizanthe watsonii T. & G.
Chrysothamnus viscidiflorus (Hook.) Nutt. ssp. *viscidiflorus*
Cicuta douglasii (DC.) Coulter & Rose
Cirsium brevistylum Cronq.
Cirsium scariosum var. *citrinum* (Petr.) D.J. Keil
Cistanthe maritima (Nuttall) Hershk.
Clarkia affinis Lewis & Lewis
Clarkia dudleyana (Abrams) J.F. Macbr.
Clarkia heterandra (Torrey) H. Lewis & Raven
Clarkia modesta Jeps.
Clarkia purpurea ssp. *viminea* (Douglas) Lewis & Lewis
Clarkia rhomboidea Douglas
Clarkia speciosa F.H. Lewis & M.R. Lewis ssp. *speciosa*

Common Name

Wartleaf Ceanothus (U)
Woollyleaf Ceanothus (R)
Woollyleaf Ceanothus (R)
Blue-blossom Ceanothus (R)
Great Basin Centaury (U)
Beautiful Centaury, Canchalagua (R)
Southern Tarplant (R, CNPS 1B.1)
Thurber Spineflower (R)
Hornwort, Coontail (R)
Island Mountain Mahogany (R, CNPS 4.3)
Cut-leaved Mountain Mahogany (R)
Mountain Mahogany (U)
White Pincushion (U)
Desert Pincushion (R)
Different-seeded Yellow Pincushion (R)
Woolly Yellow Pincushion (U)
Big-flowered Yellow Pincushion (R)
Woolly Yellow Pincushion (R, CNPS 1B.1)
Desert Pincushion (R)
Xantus Pincushion (U)
Squaw Spurge (R)
Sonoran Sandmat (R)
Littleeye Spurge (R)
Hairy Golondrina (R)
Golondrina (R)
Thyme-leaved Spurge (R)
Cleveland Lip-fern (R)
Mrs. Cooper Lip-fern (R)
Cotton Fern (R)
Pigweed (R)
Pitseed Goosefoot (R)
Aridland Goosefoot (R)
Fremont Goosefoot (U)
Narrow-leaved Goosefoot (R)
Saltmarsh Birds-beak (R, CNPS 1B.1, FE/SE)
Blakley's Spineflower (R, CNPS 1B.3)
Brittle Spineflower (R)
Cleveland Spineflower (R)
Douglas Spineflower (R)
Pink Spineflower (R)
San Fernando Valley Spineflower (R, SE)
Prostrate Spineflower (R)
Bracted Turkish Rugging (R, Type)
One-awned Spineflower (R)
Watson's Spineflower (U)
Yellow Rabbitbrush (R)
Western Water-hemlock (R)
Indian Thistle (U)
Elk Thistle (R)
Seaside Redmaids (R, CNPS 4.2)
Hairy Clarkia (R)
Dudley Godetia (R)
California Gaura (U)
Modest Clarkia (R)
Large Purple Clarkia (R)
Rhomboid Clarkia (U)
Redspot Clarkia (R)

Scientific Name

Common Name

<i>Clarkia williamsonii</i> (Durand & Hilg.) H. Lewis & M. Lewis	Williamson's Clarkia (R)
<i>Clarkia xantiana</i> Gray ssp. <i>xantiana</i>	Xantus Clarkia (R)
<i>Claytonia exigua</i> T. & G. ssp. <i>exigua</i>	Small Miner's Lettuce (U)
<i>Claytonia parviflora</i> ssp. <i>viridis</i> (Davidson) J.M. Miller & Chambers	Green Small-flowered Miner's Lettuce (R)
<i>Claytonia rubra</i> (J.T. Howell) Tidestrom ssp. <i>rubra</i>	Red Miner's Lettuce (U)
<i>Clinopodium douglasii</i> (Benth.) Kuntze	Yerba Buena (R)
<i>Clinopodium mimuloides</i> Kuntze	Monkeyflower Yerba Buena (R, CNPS 4.2)
<i>Collinsia bartsiiifolia</i> var. <i>davidsonii</i> (Parish) V. Newsom	Davidson White Chinese Houses (R)
<i>Collinsia childii</i> A. Gray	Child Blue-eyed Mary (R)
<i>Collinsia parryi</i> A. Gray	Parry Blue-eyed Mary (U)
<i>Collinsia parviflora</i> Lindley	Blue-eyed Mary, Blue Lips (R)
<i>Collinsia torreyi</i> var. <i>wrightii</i> (S. Watson) I.M. Johnston	Wright Blue-eyed Mary (U)
<i>Collomia grandiflora</i> Lindley	Large-flowered Collomia (U)
<i>Collomia tinctoria</i> Kellogg	Yellow-staining Collomia (R)
<i>Comarostaphylis diversifolia</i> ssp. <i>planifolia</i> (Jeps.) G. Wallace	Simpleleaf Summer Holly (R)
<i>Convolvulus simulans</i> Perry	Small-flowered Morning-glory (R)
<i>Cordylanthus rigidus</i> ssp. <i>setiferus</i> Chuang & Heckard	Dark-tipped Rigid Bird's-Beak (U)
<i>Coreopsis calliopsidea</i> (DC.) A. Gray	Leafy-stemmed Coreopsis (R)
<i>Cornus glabrata</i> Bentham	Brown Dogwood (R)
<i>Cornus sericea</i> L. ssp. <i>sericea</i>	American or Creek Dogwood (R)
<i>Crassula aquatica</i> (L.) Schönl.	Water Pigmy-Weed (R)
<i>Crepis acuminata</i> Nuttall	Long-leaved Hawksbeard (R)
<i>Crepis occidentalis</i> Nuttall ssp. <i>occidentalis</i>	Western Hawksbeard (U)
<i>Crepis occidentalis</i> ssp. <i>pumila</i> (Rydb.) Babcock & Stebbins	Western Hawksbeard (R)
<i>Cressa truxillensis</i> Kunth var. <i>truxillensis</i>	Spreading Alkali-Weed (U)
<i>Cryptantha affinis</i> (A. Gray) E. Greene	Side-grooved Forget-Me-Not (R)
<i>Cryptantha barbigera</i> (A. Gray) E. Greene	Bearded Forget-Me-Not (R)
<i>Cryptantha corollata</i> (I.M. Johnston) I.M. Johnston	Crowned Forget-Me-Not (Type)
<i>Cryptantha flaccida</i> (Lehm.) E. Greene	Flaccid Forget-Me-Not (R)
<i>Cryptantha leiocarpa</i> (Fischer & C. Meyer) E. Greene	Coast Forget-Me-Not (R)
<i>Cryptantha maritima</i> (Greene) Greene	Seaside Forget-Me-Not (R)
<i>Cryptantha mohavensis</i> (Greene) Greene	Mojave Forget-Me-Not (R)
<i>Cryptantha pterocarya</i> (Torr.) E. Greene	Wing-nut Forget-Me-Not (R)
<i>Cryptantha rattannii</i> E. Greene	Rattan's Forget-Me-Not (R)
<i>Cryptantha sparsiflora</i> (E. Greene) E. Greene	Few-flowered Forget-Me-Not (R)
<i>Cryptantha torreyana</i> (A. Gray) E. Greene var. <i>torreyana</i>	Torrey Forget-Me-Not (U)
<i>Cryptantha traskiae</i> I.M. Johnston	Trask Forget-Me-Not (U CNPS 1B)
<i>Cucurbita palmata</i> S. Watson	Coyote Melon (R)
<i>Cuscuta californica</i> var. <i>breviflora</i> Engelmann	California Dodder (R)
<i>Cuscuta campestris</i> Yuncker	Western Field Dodder (R)
<i>Cuscuta denticulata</i> Engelmann	Desert Dodder (R)
<i>Cuscuta indecora</i> Choisy var. <i>indecora</i>	Pretty Dodder (R)
<i>Cuscuta indecora</i> var. <i>neuropetala</i> (Engelmann) Hitchc.	Pretty Dodder (R)
<i>Cuscuta pacifica</i> Costea & M.A.R. Wright var. <i>pacifica</i>	Pacific Saltmarsh Dodder (R)
<i>Cuscuta salina</i> Englem. in W.H. Brewer, S. Watson, & A. Gray	Saltmarsh Dodder (U)
<i>Cycladenia humilis</i> var. <i>venusta</i> (Eastwood) Munz	Elegant Cycladenia (R)
<i>Cylindropuntia californica</i> var. <i>parkeri</i> (J.M. Coulter) Pinkava	Cane or Snake Cholla (U)
<i>Cyperus acuminatus</i> Torrey & Hook.	Short-pointed Umbrella-sedge (R)
<i>Cyperus erythrorhizos</i> Muhlenb.	Red-root Flatsedge (R)
<i>Cyperus laevigatus</i> L.	Smooth Flatsedge (R)
<i>Cyperus odoratus</i> L.	Flatsedge (R)
<i>Cyperus squarrosus</i> L.	Awned Flatsedge (R)
<i>Cystopteris fragilis</i> (L.) Bernhardt	Brittle or Fragile Fern (U)
<i>Danthonia unispicata</i> (Thurb.) Vasey	One-spike Oat Grass (R)
<i>Deinandra clementina</i> (Brandegee) B.G. Baldwin	Island or Catalina Tarplant (R)
<i>Deinandra kelloggii</i> (E. Greene) E. Greene	Kellogg Tarplant (R)
<i>Deinandra minthornii</i> (Jepson) B.G. Baldwin	Santa Susana Tarplant (R, Type, SR)

Scientific Name

Common Name

<i>Deinandra paniculata</i> (A. Gray) Davidson & Moxley	Paniculate Tarplant (R, CNPS 4.2)
<i>Delphinium gracilentum</i> Greene	Coast Larkspur (R)
<i>Delphinium gypsophilum</i> Ewan ssp. <i>gypsophilum</i>	Gypsum Larkspur (U, CNPS 4.2)
<i>Delphinium hesperium</i> A. Gray	Western or Coast Larkspur (R)
<i>Delphinium inopinum</i> (Jeps.) H.F. Lewis & Epling	Unexpected Larkspur (U, CNPS 4.3)
<i>Delphinium parryi</i> ssp. <i>blochmaniae</i> (Greene) F.H. Lewis & Epling	Dune Larkspur (R, CNPS 1B.2)
<i>Delphinium parryi</i> ssp. <i>purpureum</i> (F. Lewis & Epling) M.J. Warnock	Mount Piños Larkspur (CNPS 4.3)
<i>Delphinium umbraculorum</i> F.H. Lewis & Epling	Umbrella Larkspur (R, CNPS 1B.3)
<i>Deschampsia cespitosa</i> (L.) Beauv. ssp. <i>cespitosa</i>	Tufted Hairgrass (R)
<i>Deschampsia danthanooides</i> (Trin.) Munro ex Benth	Annual Hairgrass (R)
<i>Descurainia adenophora</i> (Wooton & Standley) O.E. Schulz in H.G.A. Engler	Desert Tansy Musatard (R)
<i>Descurainia californica</i> (A. Gray) O.E. Schulz	California Tansy Mustard (R)
<i>Descurainia pinnata</i> ssp. <i>brachycarpa</i> (Richardson) Detling	xxxx Tansy Mustard (U)
<i>Descurainia pinnata</i> ssp. <i>glabra</i> (Wooton & Standl.) Detl.	Naken Western Tansy Mustard (R)
<i>Descurainia pinnata</i> ssp. <i>halicotorum</i> (Cockerell) Detl.	Western Tansy Mustard (R)
<i>Descurainia pinnata</i> ssp. <i>menziesii</i> (DC.) Detl.	Menzies Tansy Mustard (U)
<i>Dicentra pauciflora</i> S. Watson	Few-flowered Bleeding Heart (R)
<u><i>Dichelostemma congestum</i> (Sm.) Kunth</u>	<u>Ookow (R)</u>
<i>Dichondra occidentalis</i> House	Western Dichondra (R, CNPS 4.2)
<i>Dieteria canescens</i> (Pursh) Torrey ssp. <i>canescens</i>	Hoary-Aster (U)
<i>Dieteria canescens</i> ssp. <i>leucanthemifolia</i> (Greene) D.R. Morgan & R.L. Hartm.	Whiteleaf Hoary-Aster (R)
<i>Dieteria canescens</i> ssp. <i>shastensis</i> (A. Gray) D.R. Morgan & R.L. Hartm.	Shasta Hoary-Aster (R)
<i>Diplacus</i> [<i>Mimulus</i>] <i>punicus</i> Nuttall	Red Bush Monkeyflower (R)
<u><i>Dithyrea maritima</i> (A. Davids.) Davidson</u>	<u>Beach Spectacle-pod (R, CNPS 1B.1)</u>
<i>Dodecatheon alpinum</i> (A. Gray) E. Greene	Alpine Shooting Star (R)
<i>Dodecatheon clevelandii</i> E. Greene ssp. <i>clevelandii</i>	Cleveland Shooting Star (R)
<i>Dodecatheon clevelandii</i> ssp. <i>patulum</i> (Greene) Thompson	Lowland Padre Shooting Star (R)
<i>Downingia bella</i> Hoover	Hoover Downingia (R)
<i>Downingia pulchella</i> (Lindl.) Torrey	Flat-face Downingia (R)
<i>Draba cuneifolia</i> T. & G.	Wedgeleaf Draba (R)
<i>Draba verna</i> L.	Vernal Whitlow-grass (R)
<i>Drymocallis glandulosa</i> var. <i>reflexa</i> (E. Greene) Ertter	Greene Cinquifol (U)
<i>Drymocallis glandulosa</i> var. <i>viscida</i> (Parish) Ertter	Sticky Cinquifol (R)
<i>Drymocallis glandulosa</i> var. <i>wrangelliana</i> (Fisch. & Avé-Lall.) Ertter	Wrangell's Cinquefoil (U)
<i>Drymocallis lactea</i> (Greene) Rydb. var. <i>lactea</i>	Sierra Nevada Sticky Cinquefoil (U)
<i>Dudleya abramsii</i> ssp. <i>parva</i> (Rose & Davids.) J. Bartel	Conejo Live-forever (R, FT, CNPS 1B.2)
<i>Dudleya blochmaniae</i> (Eastw.) Moran ssp. <i>blochmaniae</i>	Blochman Live-forever (U, CNPS 1B.1)
<i>Dudleya caespitosa</i> (Haw.) Britt. & Rose	Sea Lettuce (R)
<i>Dudleya cymosa</i> ssp. <i>agourensis</i> K. Nakai	Agoura Hills Live-forever (R, FT, CNPS 1B.2)
<i>Dudleya cymosa</i> (Lem.) Britton & Rose ssp. <i>cymosa</i>	Canyon Live-forever (R)
<i>Dudleya cymosa</i> ssp. <i>marcescens</i> Moran	Marcescent Live-forever (R, FT, SR, CNPS 1B.2)
<i>Dudleya cymosa</i> ssp. <i>ovatifolia</i> (Britt.) Moran	Santa Monica Mtns. Live-forever (R, FT, CNPS 1B)
<i>Dudleya cymosa</i> ssp. <i>pumila</i> (Rose) K. Nakai	Pygmy Live-forever (U)
<i>Dudleya farinosa</i> (Lindley) Britt. & Rose	Farinose Live-forever (R)
<i>Dudleya pulverulenta</i> ssp. <i>arizonica</i> (Rose) Moran	Chalky Live-forever (R)
<i>Dudleya verityi</i> N. Nakai	Verity Live-forever (R, FT, CNPS 1B.2)
<u><i>Dudleya virens</i> ssp. <i>insularis</i> (Rose) Moran</u>	<u>Island Green Live-forever (R, CNPS 1B.2)</u>
<u><i>Dudleya virens</i> (Rose) Moran ssp. <i>virens</i></u>	<u>Bright Green Live-forever (R, CNPS 1B.2)</u>
<i>Eastwoodia elegans</i> Brandegeee	Yellow Mock Aster (R)
<i>Echinochloa crus-pavonis</i> (Kunth) Shultes	Gulf Barnyard Grass (R)
<i>Echinodorus berteroi</i> (Spreng.) Fassett	Bur Head (U)
<i>Eclipta prostrata</i> (L.) L.	False Daisy (R)
<i>Ehrendorferia ochroleuca</i> (Engelm.) Fukuhara	White Eardrops (R)
<i>Elatine brachysperma</i> Gray	Slender Waterwort (R)
<i>Elatine californica</i> Gray	California Waterwort (R)
<i>Eleocharis acicularis</i> var. <i>gracilenscens</i> Svenson	Graceful Spikerush (R)
<i>Eleocharis bella</i> (Piper) Svenson	Bella Spikerush (R)

<u>Scientific Name</u>	<u>Common Name</u>
<i>Eleocharis bernardina</i> Munz & Johnston	Few-flowered Club-rush (R)
<i>Eleocharis erythropoda</i> Steud.	Bald Spikerush (R)
<i>Eleocharis montevidensis</i> Kunth	Sand Spikerush (R)
<i>Eleocharis parvula</i> (Roemer & Schultes) Link ex Bluff, Nees, & Schauer	Small Spikerush (R)
<i>Eleocharis quinqueflora</i> (Hartmann) O. Schwarz	Few-flowered Spikerush (R)
<i>Eleocharis rostellata</i> (Torrey) Torrey	Beaked Spikerush (R)
<i>Eleocharis suksdorfiana</i> Beauv.	Suksdorf's Spikerush (R)
<i>Elodea canadensis</i> Rich.	Common Waterweed (R)
<i>Elymus elymoides</i> var. <i>brevifolius</i> (J.G. Sm.) Dorn	Shortleaf Squirreltail (R)
<i>Elymus elymoides</i> var. <i>californicus</i> (J.G. Sm.) J.P. Sm.	California Squirreltail (R)
<i>Elymus glaucus</i> ssp. <i>jepsonii</i> (Burt Davy) Gould	Jepson Blue or Woodland Wildrye (R)
<i>Elymus xgouldii</i> J.P. Sm. & Columbus	Gould's Wildrye (R)
<i>Elymus xhanseni</i> Scribn.	Hansen's Wildrye (R)
<i>Elymus smithii</i> (Rdb.) Gould	Western Wheat Grass (R)
<i>Elymus stebbinsii</i> (Scribner & J.G. Smith) Gould	Wheatgrass (R)
<i>Elymus trachycaulus</i> ssp. <i>subsecundus</i> (Link) Gould	Slender Wheatgrass (R)
<i>Elymus trachycaulus</i> (Link) Shinn. ssp. <i>trachycaulus</i>	Slender Wheatgrass (R)
<i>Emmenanthe penduliflora</i> var. <i>rosea</i> Brand	Rose Whispering Bells (R)
<i>Encelia farinosa</i> Torrey & A. Gray	Brittlebush, Incienso (R)
<i>Encelia frutescens</i> (Gray) Gray	Brittlebush, Incienso (R)
<i>Encelia virginiensis</i> Nelson	Brittlebush (R)
<i>Enemion occidentale</i> (H. & A.) J.R. Drummond & Hutchinson	Western Meadow-rue (R)
<i>Ephedra californica</i> S. Watson	California Desert Tea, Cañatillo (R)
<i>Ephedra nevadensis</i> S. Watson	Nevada Ephedra or Mormon-tea (R)
<i>Epilobium campestre</i> (Jeps.) Hoch & W.L. Wagner	Smooth Spike-primrose (R)
<i>Epilobium ciliatum</i> ssp. <i>glandulosum</i> (Lehm.) P. Hoch & Raven	Sticky Northern Willow-herb (R)
<i>Epilobium densiflorum</i> (Lindley) P. Hoch & Raven	Dense-flowered Spike-primrose (R)
<i>Epilobium foliosum</i> (T. & G.) Suksd.	Leafy Spike-primrose (R)
<i>Epilobium glaberrimum</i> Barbey ssp. <i>glaberrimum</i>	Waxy Willow-herb (R)
<i>Epilobium minutum</i> Lindley ex Lehm.	Chaparral Willowherb (R)
<i>Epilobium oregonense</i> Hausskn.	Oregon Spike-primrose (R)
<i>Epilobium torreyi</i> (S. Watson) P. Hoch & Raven	Brook Spike-primrose (R)
<i>Equisetum arvense</i> L.	Common or Field Horsetail (U)
<i>Equisetum hyemale</i> var. <i>affine</i> (Engelm.) Calder & R.L. Taylor	Common or Giant Scouring Rush (U)
<i>Equisetum telmateia</i> ssp. <i>braunii</i> (Milde) R.L. Hauke	Giant Horsetail (U)
<i>Equisetum Xferrissii</i> Clute	Ferris Horsetail (R)
<i>Eragrostis mexicana</i> var. <i>virescens</i> (C. Presl) Koch & E. Sanchez	Orcutt Lovegrass (U)
<i>Eragrostis pentinacea</i> var. <i>miserrima</i> (Fourn.) Reeder	Spreading Tufted Lovegrass (R)
<i>Eragrostis pectinacea</i> (Michx.) Nees var. <i>pectinacea</i>	Tufted Lovegrass (U)
<i>Eremalche exilis</i> (A. Gray) E. Greene	White-flowered Mallow (R)
<i>Eremalche parryi</i> (E. Greene) E. Greene ssp. <i>parryi</i>	Parry Mallow (U)
<i>Eremocarya micrantha</i> var. <i>lepida</i> MacBr.	Mountain Red-root Eremocarya (R)
<i>Eremocarya micrantha</i> (Torrey) E. Greene var. <i>micrantha</i>	Eremocarya (R)
<i>Eriastrum densifolium</i> (Benth.) Mason ssp. <i>densifolium</i>	Woolly Star (R)
<i>Eriastrum densifolium</i> ssp. <i>mohavense</i> (Craig) H. Mason	Mojave Woolly Star (R)
<i>Eriastrum eremicum</i> (Jeps.) H. Mason ssp. <i>eremicum</i>	Woolly Star (R)
<i>Eriastrum filifolium</i> (Nutt.) Wooton & Standl.	Threadleaf Woolly Star (R)
<i>Eriastrum hooveri</i> (Jepson) H. Mason	Hoover Woolly Star (R, CNPS 4.2)
<i>Eriastrum pluriflorum</i> (A.A. Heller) H. Mason	Woolly Star (R)
<i>Eriastrum sapphirinum</i> ssp. <i>dasyanthem</i> (Brand) H. Mason	Shaggy-flowered Sapphire Woolly Star (R)
<i>Ericameria arborescens</i> (A. Gray) E. Greene	Golden-fleece (U)
<i>Ericameria cooperi</i> (Gray) H.M. Hall var. <i>cooperi</i>	Cooper Goldenbush (R)
<i>Ericameria cuneata</i> (Gray) McClatchie var. <i>cuneata</i>	Wedgeleaf Goldenbush (U)
<i>Ericameria cuneata</i> var. <i>spatulata</i> (A. Gray) H.M. Hall	Spatulate-leaved Goldenbush (R)
<i>Ericameria ericoides</i> (Less.) Jeps. ssp. <i>ericoides</i>	Heatherleaf Goldenbush (U)
<i>Ericameria nauseosa</i> var. <i>bernardina</i> (Hall) Nesom & Baird	San Bernardino Rubber Rabbitbrush (R)
<i>Ericameria nauseosa</i> var. <i>speciosa</i> (Nutt.) Nesom & Baird	White-stemmed Rubber Rabbitbrush (R)

<u>Scientific Name</u>	<u>Common Name</u>
<i>Ericameria palmeri</i> var. <i>pachylepis</i> (H.M. Hall) Nesom	Palmer Goldenbush (U)
<i>Ericameria parryi</i> var. <i>aspera</i> (Greene) G.L. Newson & G.I. Baird	Parry Rabbitbrush (R)
<i>Ericameria teretifolia</i> (Durand & Hilg.) Jepson	Round-leaved Rabbitbrush (R)
<i>Erigeron breweri</i> var. <i>covillei</i> (Greene) G. Neswom	Fleabane Daisy (R)
<u><i>Erigeron glaucus</i> Ker-Gawler</u>	<u>Seaside Daisy (R)</u>
<i>Eriodictyon californicum</i> (Hooker & Arnott) Torrey	California Yerba Santa (R)
<i>Eriodictyon traskiae</i> ssp. <i>smithii</i> Munz	Smith's Yerba Santa (U)
<i>Eriodictyon trichocalyx</i> A.A. Heller var. <i>trichocalyx</i>	Yerba Santa (U)
<u><i>Eriogonum arborescens</i> Greene</u>	<u>Arborescent Buckwheat (U)</u>
<i>Eriogonum brachyanthum</i> Coville	Shortflower Wild Buckwheat (R)
<i>Eriogonum cithariforme</i> var. <i>agninum</i> (E. Greene) Reveal	Santa Ynez Wild Buckwheat (U)
<i>Eriogonum clavatum</i> Small	Hoover's Little Trumpet (U)
<i>Eriogonum covilleum</i> Eastw.	Coville Buckwheat (R)
<i>Eriogonum crocatum</i> Davidson	Conejo or Saffron Buckwheat (R, Type, SR)
<i>Eriogonum deflexum</i> var. <i>baratum</i> (Elmer) Reveal	Flat-crown Buckwheat (R, Type)
<i>Eriogonum elegans</i> Greene	Elegant Buckwheat (U)
<i>Eriogonum gracillimum</i> S. Watson	Slender Buckwheat (R)
<u><i>Eriogonum grande</i> Greene var. <i>grande</i></u>	<u>Island Buckwheat (U)</u>
<u><i>Eriogonum grande</i> Greene var. <i>rubescens</i> Munz</u>	<u>Red Island Buckwheat (U)</u>
<u><i>Eriogonum grande</i> Greene var. <i>timorum</i> Reveal</u>	<u>San Nicolas Island Buckwheat (U)</u>
<i>Eriogonum hirtiflorum</i> S. Watson	Hairy-flowered Buckwheat (U)
<i>Eriogonum hooveri</i> (Reveal) Reveal	Hoover's Little Trumpet (U)
<i>Eriogonum inerme</i> (S. Watson) Jeps.	Unarmed Buckwheat (U)
<i>Eriogonum kennedyi</i> ssp. <i>alpigenum</i> (Munz & Johnston) Munz & Johnston	Alpine Kennedy Buckwheat (R, CNPS 1B.3)
<i>Eriogonum kennedyi</i> var. <i>austromontanum</i> Munz & I.M. Johnston	Southern Mountain Buckwheat (U, CNPS 1B.2)
<i>Eriogonum latifolium</i> Smith	Coast or Seaside Buckwheat, Tibinagua (R)
<i>Eriogonum molestum</i> Greene	Pine Buckwheat (U)
<i>Eriogonum nudum</i> var. <i>auriculatum</i> (Benth.) J.P. Tracy ex Jeps.	Big-eared Wild Buckwheat (R)
<i>Eriogonum ordii</i> S. Watson	Ord Buckwheat (U)
<i>Eriogonum ovalifolium</i> Nutt. var. <i>ovalifolium</i>	Cushion Wild Buckwheat (R)
<i>Eriogonum parvifolium</i> var. <i>paynei</i> (Wolf ex Munz) Reveal	Payne Dune Buckwheat (U, Type)
<i>Eriogonum pusillum</i> T. & G.	Puny Buckwheat (R)
<i>Eriogonum spergulinum</i> var. <i>reddingianum</i> (Jones) J.T. Howell	Redding's Wild Buckwheat (U)
<i>Eriogonum spergulinum</i> A. Gray var. <i>spergulinum</i>	Spurry Wild Buckwheat (R)
<i>Eriogonum thurberi</i> Torrey	Thurber's Wild Buckwheat (R)
<i>Eriogonum umbellatum</i> var. <i>bahiiiforme</i> (T. & G.) Jepson	Sulphur-flower Buckwheat (U)
<i>Eriogonum umbellatum</i> var. <i>canifolium</i> Reveal	Sulphur Buckwheat (R)
<i>Eriogonum umbellatum</i> var. <i>furcosum</i> Reveal	Sulphur Buckwheat (R)
<i>Eriogonum umbellatum</i> var. <i>subaridum</i> S. Stokes	Sulphur Buckwheat (R)
<i>Eriogonum vimineum</i> Benth.	Wicker-stem Wild Buckwheat (U)
<i>Eriogonum viridescens</i> A. Heller	Green Buckwheat (U)
<i>Eriogonum wrightii</i> var. <i>membranaceum</i> Jeps.	Sheathed Wright Buckwheat (R)
<i>Eriogonum wrightii</i> var. <i>trachygonum</i> (Torr. ex Benth.) Jeps.	Rough-node Bastardsage (R)
<i>Eriogonum wrightii</i> Benth. var. <i>wrightii</i>	Wright's Bastardsage (R)
<i>Eriophyllum confertiflorum</i> var. <i>tanacetiflorum</i> (E. Greene) Jepson	Tansy-leaved Woolly Yarrow (R, CNPS 4.3)
<i>Eriophyllum jepsonii</i> Greene	Jepson Woolly Yarrow (R, CNPS 4.3)
<i>Eriophyllum staechadifolium</i> Lagasca	Seaside Woolly Sunflower (R)
<i>Eryngium vaseyi</i> J. Coulter & Rose	Coyote Thistle or Button-celery (R)
<u><i>Erysimum insulare</i> E. Greene</u>	<u>Island Wallflower (R, CNPS 1B.3)</u>
<i>Erysimum moniliforme</i> Eastwood	Yellow Wallflower (R)
<i>Erysimum suffrutescens</i> (Abrams) Rossbach	Suffrutescent Wallflower (R, CNPS 4.2)
<i>Eschscholzia hypocoides</i> Bentham	Gypsum Poppy (R)
<i>Eschscholzia lemmonii</i> Greene ssp. <i>lemmonii</i>	Lemmon Poppy (R) CNPS List 4
<i>Eschscholzia minutiflora</i> S. Watson	Tiny-flowered Poppy (R)
<u><i>Eschscholzia ramosa</i> (Greene) Greene</u>	<u>Island Poppy (R)</u>
<i>Euphorbia crenulata</i> Engelman	Chinese Caps (R)
<i>Euphorbia palmeri</i> S. Watson var. <i>palmeri</i>	Wood Spurge (R)

Scientific Name

Euphorbia spathulata Lam.
Extriplex californica (Moq.) E.H. Zacharias
Festuca rubra L.
Fimbristylis thermalis S. Watson
Forestiera pubescens Nutt.
Fraxinus latifolia Benth
Fraxinus velutina Torrey
Fritillaria agrestis E. Greene
Fritillaria biflora Lindley var. *biflora*
Fritillaria ojaiensis A. Davidson
Fritillaria pinetorum A. Davidson
Funastrum cynanchoides var. *hartwegii* (Vail) Krings
Galium angustifolium ssp. *foliosum* (Hilend & Howell) Dempster & Stebb.
Galium angustifolium ssp. *gabrielense* (Munz & I.M. Johnst.) Dempster & Stebb.
Galium bifolium S. Watson
Galium californicum Hooker & Arnott ssp. *californicum*
Galium californicum ssp. *flaccidum* (E. Greene) Dempster & Stebb.
Galium cliftonsmithii (Dempster) Dempster & Stebb.
Galium trifidum var. *pacificum* Wiegand
Galium triflorum Michaux
Gamochaeta ustulata (Nutt.) Holub
Garrya elliptica Lindley
Gaura coccinea Pursh
Gayophytum heterozygum H. Lewis & J. Szweykowski
Gayophytum humile A.L. Juss.
Gayophytum racemosum T. & G.
Geranium californicum G. Jones & F. Jones
Geranium carolinianum L.
Geranium viscosissimum Fischer & C. Meyer
Gilia achilleifolia Benth. ssp. *achilleifolia*
Gilia achilleifolia Benth. ssp. *multicaulis* (Benth.) V. & A. Grant
Gilia aliquanta A. D. Grant & V. E. Grant
Gilia austro-occidentalis (A.D. & V.E. Grant) A.D. & V.E. Grant
Gilia brecciarum M.E. Jones ssp. *brecciarum*
Gilia brecciarum ssp. *jacens* (A. Grant & V. Grant) Day
Gilia capillaris Kellogg
Gilia capitata ssp. *staminea* (Greene) V.E. Grant
Gilia interior (Mason & A. Grant) A. Grant
Gilia latiflora ssp. *cuyamensis* A. & V. Grant
Gilia latiflora ssp. *davyi* (Milliken) A. & V. Grant
Gilia latiflora (Gray) Gray ssp. *latiflora*
Gilia leptantha ssp. *pinetorum* A. & V. Grant
Gilia malior A.G. Day & V.E. Grant
Gilia millefoliata Fisch. & C. A. Mey.
Gilia minor A.D. Grant & V.E. Grant
Gilia modocensis Eastwood
Gilia nevinii Gray
Gilia ochroleuca ssp. *exilis* (Gray) A.& V. Grant
Gilia ochroleuca M.E. Jones ssp. *ochroleuca*
Gilia sinuata Benth.
Gilia tenuiflora Benth. ssp. *tenuiflora*
Gilia tetrabreccia A. & V. Grant
Gilia transmontana (H. Mason & A. Grant) A. & V. Grant
Githopsis diffusa A. Gray ssp. *diffusa*
Grayia spinosa (Hook.) Moq.
Grindelia camporum E. Greene var. *camporum*
Grindelia hirsutula Hook. & Arn. var. *hirsutula*

Common Name

Spurge (R)
 California Saltbush (U)
 Red Fescue (R)
 Hot-Springs Fimbristylis (R)
 Desert Olive, Dwarf Swamp Privet (U)
 Oregon Ash (R)
 Velvet or Arizona Ash (U)
 Stink Bells (R, CNPS 4.2)
 Chocolate Lily, Mission Bells (U)
 Ojai Fritillary (Type, CNPS 1B.2)
 Pine Fritillary (R, CNPS 4.3)
 Climbing Milkweed (R)
 Channel Islands Bedstraw (R, Type)
 San Antonio Canyon Bedstraw (R, 4.3)
 Low Mountain Bedstraw (R)
 California Bedstraw (R)
 California Bedstraw (R)
 Santa Barbara Bedstraw (R, CNPS 4.3)
 Coastal Bedstraw (R)
 Sweet-scented Bedstraw (R)
 Purple Everlasting (R)
 Silk-tassel Bush (R)
 Wild Honeysuckle, Linda Tarde (U)
 Hybrid Gayophytum (R)
 Low Gayophytum (R)
 Black-foot Gayophytum (R)
 California Geranium (R)
 Cranesbill, Carolina Geranium (R)
 Sticky Cranesbill (R)
 California or Yarrow-leaved Gilia (U)
 Many-stemmed California Gilia (R)
 Puff-calyx Gilia (R)
 Southwestern Gilia (R)
 Breccia Gilia (U)
 Purple-flowered Breccia Gilia (R)
 Miniature or Smooth-leaved Gilia (R)
 Bluehead Gilia (R)
 Slender-flowered Gilia (R)
 Cuyama Gilia (U, CNPS 4.3)
 Davy Broad-flowered Gilia (R)
 Broad-flowered Gilia (R)
 Gabriel Trumpet (U, CNPS 4.3)
 Scrub Gilia (R)
 Dark-eyed Gilia (R)
 Little Gilia (U)
 Modoc Gilia (R)
 Nevin Gilia (U)
 Volcanic Gilia (R)
 Volcanic Gilia (R)
 Sinuate Gilia (R)
 Greater Yellowthroat Gilia (R)
 Mount Piños Gilia (U)
 Desert Gilia (U)
 Southern Bluecup (R)
 Hop-sage (R)
 Great Valley Gumplant (R)
 Hirsute Gumplant (U, Type)

<u>Scientific Name</u>	<u>Common Name</u>
<i>Grindelia stricta</i> var. <i>platyphylla</i> (Greene) M.A. Lane	Island Gumplant (R)
<i>Grindelia Xlatifolia</i> Kellogg ssp. <i>latifolia</i>	Coastal Gumplant (R)
<i>Hazardia cana</i> (A. Gray) E. Greene	San Clemente Island Gumplant (R)
<i>Hazardia detonsa</i> (Greene) Greene	Island Goldenbush (U, CNPS 4.3)
<i>Helenium bigelovii</i> Gray	Bigelow Sneezeweed (U)
<i>Helianthemum scoparium</i> Nutt.	Peak Rushrose (U)
<i>Helianthus gracilentus</i> Gray	Wild Mountain or Slender Sunflower (U)
<i>Hesperevax acaulis</i> var. <i>robustior</i> Morefield	Robust Dwarf Evax (R)
<i>Hesperochiron californicus</i> (Benth.) S. Watson	California Hesperochiron (R)
<i>Hesperochiron pumilus</i> (Griseb.) Porter	Hesperochiron (R)
<i>Hesperocnide tenella</i> Torrey	Western Nettle (U)
<i>Hesperoyucca</i> [<i>Yucca</i>] <i>whipplei</i> ssp. <i>intermedia</i> A.L. Haines	Intermediate Our Lord's Candle (R)
<i>Hesperoyucca whipplei</i> ssp. <i>percursa</i> (A.L. Haines) J.M. Weber	Our Lord's Candle (R)
<i>Heterocodon rariflorum</i> Nuttall	Western Pearl-flower (R)
<i>Heterotheca subaxillaris</i> ssp. <i>laxifolia</i> (Buckley) Semple	False Goldenaster (R)
<i>Heterotheca sessiliflora</i> ssp. <i>camphorata</i> (Eastw.) Semple	Camphor Goldenaster (R)
<i>Heterotheca sessiliflora</i> (Nuttall) Shinnery ssp. <i>sessiliflora</i>	Beach Goldenaster (R)
<i>Heterotheca villosa</i> (Pursh) Shinnery var. <i>hispida</i> (Hook.) V. Harms	Woolly Goldenaster (R)
<i>Heuchera abramsii</i> Rydb.	Abrams Alumroot (R, CNPS 4.3)
<i>Heuchera caespitosa</i> Eastw.	Urn-flowered Alumroot (R, CNPS 4.3)
<i>Heuchera elegans</i> Abrams	Urn-flowered Alumroot (R)
<i>Heuchera maxima</i> Greene	Island Alumroot (R, CNPS 1B.2)
<i>Hieracium albiflorum</i> Hooker	White-flowered Hawkweed (R)
<i>Hieracium horridum</i> Fries	Shaggy or Woolly Hawkweed (R)
<i>Hoffmannseggia glauca</i> (Ortega) Eifert	Pig-nut, Hog Potato (R)
<i>Hoita orbicularis</i> (Lindley) Rydb.	Round-leaved Hoita (U)
<i>Hollisteria lanata</i> S. Watson	Hollisteria (R)
<i>Holocarpha heermannii</i> (E. Greene) Keck	Heermann Tarplant (U)
<i>Holodiscus discolor</i> var. <i>macrophyllus</i> (Rydb.) Jeps.	Rock Spiraea (R)
<i>Hordeum brachyantherum</i> Nevski ssp. <i>brachyantherum</i>	Meadow Barley (U)
<i>Hordeum depressum</i> (Scribner & J.G. Smith) Rydb.	Low Barley (R)
<i>Hordeum intercedens</i> Nevski	Vernal Barley (U, CNPS 3.2)
<i>Horkelia cuneata</i> Lindley ssp. <i>cuneata</i>	Wedgeleaf Horkelia (R)
<i>Horkelia cuneata</i> ssp. <i>puberula</i> (Greene) Keck	Fuzzy Horkelia (R, CNPS 1B.1)
<i>Horkelia rydbergii</i> Elmer	Rydberg Horkelia (U)
<i>Hosackia crassifolia</i> Benth. var. <i>crassifolia</i>	Broad-leaved Hosackia (U)
<i>Hosackia oblongifolia</i> var. <i>cuprea</i> (Greene) Brouillet	Stream Trefoil (R)
<i>Hosackia oblongifolia</i> Benth. var. <i>oblongifolia</i>	Narrow-leaved Hosackia, Stream Trefoil (U)
<i>Hosackia stipularis</i> Benth. var. <i>stipularis</i>	Balsam Lotus (R)
<i>Hulsea heterochroma</i> Gray	Red-rayed Hulsea (R)
<i>Hulsea vestita</i> ssp. <i>gabrielensis</i> Wilken	San Gabriel Hulsea (R, CNPS 4.3)
<i>Hulsea vestita</i> ssp. <i>parryi</i> (A. Gray) Wilken	Parry's Sunflower (R, CNPS 4.3)
<i>Hutchinsia procumbens</i> (L.) Desv.	Desert Hutchinsia (U)
<i>Hydrocotyle umbellata</i> L.	Marsh Pennywort (R)
<i>Hydrocotyle verticillata</i> Thunb.	Marsh Pennywort (R)
<i>Hypericum formosum</i> var. <i>scouleri</i> (Hook.) J. Coulter	St. John's Wort (R)
<i>Imperata brevifolia</i> Vasey	Satintail (R, CNPS 2.1)
<i>Iris hartwegii</i> ssp. <i>australis</i> (Parish) L.W. Lenz	Hartweg's Southern Iris (R)
<i>Iris missouriensis</i> Nuttall	Western Blue Flag [Iris] (U)
<i>Isocoma acradenia</i> var. <i>bracteosa</i> (E. Greene) G.L. Nesom	Desert Goldenbush (R)
<i>Isoetes howellii</i> Engelm. var. <i>howellii</i>	Howell Quillwort (R)
<i>Isoetes howellii</i> var. <i>minima</i> (A.A. Eaton) N.E. Pfeiffer	Small Howell Quillwort (R)
<i>Isoetes nuttallii</i> A. Braun	Nuttall Quillwort (R)
<i>Isolepis cernua</i> (Vahl) Roemer & Schultes var. <i>cernua</i>	Low Clubrush (U)
<i>Iva hayesiana</i> A. Gray	San Diego Marsh-elder (R)
<i>Ivesia santolinoides</i> A. Gray	Mousetail Ivesia (U)
<i>Ivesia saxosa</i> (Greene) B. Ertter	Five-finger Silverweed (R)

<u>Scientific Name</u>	<u>Common Name</u>
<i>Jaumea carnosa</i> (Less.) Gray	Fleshy Jaumea (U)
<i>Jensia yosemitana</i> (Parry ex A. Gray) B.G. Baldwin	Yosemite Tarplant (R)
<i>Jepsonia malvifolia</i> (Greene) Small	Island Jepsonia (R, CNPS 4.2)
<i>Juglans californica</i> S. Watson	Southern California Black Walnut (CNPS 4.2)
<i>Juncus acutus</i> ssp. <i>leopoldii</i> (Parl.) Snogerup	Spiny Rush (U, CNPS 4.2)
<i>Juncus arcticus</i> ssp. <i>vallicola</i> (Rydb.) Lint	Valley Baltic Rush (R)
<i>Juncus balticus</i> Willd. var. <i>ater</i> (Rydb.) Snogerup	Rocky Mountain Rush (R)
<i>Juncus breweri</i> Engelm.	Brewer Rush (R)
<i>Juncus bufonius</i> var. <i>congestus</i> Wahlenb.	Congested Rush (R)
<i>Juncus bufonius</i> var. <i>occidentalis</i> F.J. Hermann	Western Toad Rush (R)
<i>Juncus confusus</i> Cov.	Colorado Rush (R)
<i>Juncus effusus</i> ssp. <i>austrocalifornicus</i> H.L. Lint ex Zita	Pacific Rush (U)
<i>Juncus ensifolius</i> Wikström var. <i>ensifolius</i>	Swordleaf or Three-stamen Rush (R)
<i>Juncus lescurii</i> Bolander	Salt Rush (R)
<i>Juncus macrandrus</i> Cov.	Long-anthered Rush (R)
<i>Juncus nevadensis</i> S. Watson var. <i>nevadensis</i>	Sierra Rush (R)
<i>Juncus occidentalis</i> (Coville) Wiegand	Western Rush (R)
<i>Juncus oxymersis</i> Engelm.	Iris-leaved or Pointed Rush (R)
<i>Juncus patens</i> E. Meyer	Spreading Rush (R)
<i>Juncus phaeocephalus</i> var. <i>paniculatus</i> Engelm.	Brown-fruited Rush (R)
<i>Juncus phaeocephalus</i> Engelm. var. <i>phaeocephalus</i>	Brown-fruited Rush (R)
<i>Juncus tiehmii</i> Ertter	Tiehm's Rush (R)
<i>Juncus torreyi</i> Coville	Torrey Rush (R)
<i>Juniperus occidentalis</i> Hook.	Western Juniper (R)
<i>Keckiella breviflora</i> var. <i>glabrisepala</i> (D.D. Keck) N.H. Holmgren	Naked Stubflower Bush Penstemon (R)
<i>Krascheninnikovia lanata</i> (Pursh) A.D.J. Meeuse & Smit	Winter Fat (R)
<i>Laënnecia coulteri</i> (A. Gray) G.L. Nesom	Coast Horseweed (U)
<i>Lastarriaea coriacea</i> (Goodman) Hoover	Lastarriaea (R)
<i>Lasthenia coronaria</i> (Nutt.) Ornduff	Crown-pappus Goldfields (R)
<i>Lasthenia ferrisiae</i> Ornduff	Ferris Goldfields (R, CNPS 4.2)
<i>Lasthenia glaberrima</i> A. DC.	Rayless or Smooth Goldfields (R)
<i>Lasthenia glabrata</i> ssp. <i>coulteri</i> (Gray) Ornduff	Rayless Goldfields (R, CNPS 1B.1)
<i>Lasthenia microglossa</i> (A. DC.) E. Greene	Small-rayed Goldfields (R)
<i>Lathyrus vestitus</i> ssp. <i>alefeldii</i> (T.G. White) Broich	Alefeld's Pacific Peavine (R)
<i>Lathyrus vestitus</i> ssp. <i>bolanderi</i> (S. Watson) C. Hitchc.	White-petaled Peavine (R)
<i>Lathyrus vestitus</i> ssp. <i>laevicarpus</i> Broich	Pacific Peavine (U, Type)
<i>Lavatera assurgentiflora</i> Kellogg ssp. <i>assurgentiflora</i>	Malva Rose (R)
<i>Layia glandulosa</i> ssp. <i>lutea</i> Keck	Yellow Layia (U)
<i>Layia glandulosa</i> ssp. <i>rosea</i> Gray	Rose Layia (R, Type)
<i>Layia heterotricha</i> (DC.) Hook. & Arn.	Pale-yellow Layia (R, CNPS 1B.1)
<i>Layia leucopappa</i> D.D. Keck	Comanche Point Layia (R, CNPS 1B.1)
<i>Layia pentachaeata</i> ssp. <i>albida</i> Keck	White Tidy Tips (R)
<i>Layia platyglossa</i> (Fischer & C. Meyer) A. Gray	Tidy Tips (U)
<i>Lemna aequinoctialis</i> Welw.	Lesser Duckweed (R)
<i>Lemna gibba</i> L.	Gibbose Duckweed (R)
<i>Lemna minor</i> L.	Duckweed (R)
<i>Lemna minuta</i> Kunth	Tiny Duckweed (U)
<i>Lemna turionifera</i> Landolt	Duckweed (R)
<i>Lemna valdiviana</i> Philippi	Big Duckweed (U)
<i>Lepechinia calycina</i> (Bentham) Epling	Pitcher Sage (U)
<i>Lepechinia fragrans</i> (E. Greene) Epling	Fragrant Pitcher Sage (U, CNPS 4.2)
<i>Lepechinia rossii</i> S. Boyd & O. Mistretta	Ross' Pitcher Sage (R, CNPS 1B.2)
<i>Lepidium dictyotum</i> A. Gray	Veiny Peppergrass (R)
<i>Lepidium lasiocarpum</i> Nutt. var. <i>lasiocarpum</i>	Hairy-pod Peppergrass (U)
<i>Lepidium oblongum</i> Small	Oblong Peppergrass (U)
<i>Lepidium strictum</i> (S. Watson) Rattan	Prostrate Peppergrass (R)
<i>Lepidium virginicum</i> var. <i>menziesii</i> (DC.) Thellung	Hairy Poorman's Peppergrass (U, CNPS 1B.2)

Scientific Name

Lepidium virginicum var. *pubescens* (Greene) Thell.
Leptodactylon pungens ssp. *hallii* (Parish) H. Mason
Leptodactylon pungens ssp. *pulchriflorum* (Brand) H. Mason
Leptosiphon androsaceus Benth
Leptosiphon bicolor Nuttall
Leptosiphon breviculus (A. Gray) J.M. Porter & L.A. Johnson
Leptosiphon ciliatus (Benth.) Jepson
Leptosiphon nudatus (E. Greene) J.M. Porter & L.A. Johnson
Leptosiphon pygmaeus ssp. *continentalis* (Raven) Porter & Johnson
Leptosyne californica Nuttall
Leptosyne calliopsidea (DC.) A.Gray
Lessingia glandulifera var. *peirsonii* (J.T. Howell) Markos
Lessingia leptoclada A. Gray
Lessingia pectinata var. *tenuipes* (J.T. Howell) Markos
Lessingia tenuis (Gray) Cov.
Lewisia nevadensis (A. Gray) Robinson
Lewisia pygmaea (A. Gray) Robinson
Leymus cinereus A. Löve
Leymus Xhansenii Scribner
Lilium humboldtii ssp. *ocellatum* (Kellogg) Thorne
Lilium pardalinum Kellogg ssp. *pardalinum*
Limonium californicum (Boiss.) A.A. Heller
Limosella acaulis Sesse & Mocino
Linanthus bigelovii (Gray) Greene
Linanthus dianthiflorus (Benth.) Greene
Linanthus parryae (Gray) Greene
Linanthus pungens (Torr.) J.M. Porter & L.A. Johnson
Linaria canadensis (L.) Dum.-Cours. var. *canadensis*
Linaria canadensis (L.) Dum.-Cours. var. *texana* (Scheele) Pennell
Linum lewisii Pursh
Lipocarpha micrantha (M. Vahl.) G.C. Tucker
Lithophragma glabrum Nuttall
Lithophragma heterophyllum (Hook. & Arn.) T. & G.
Lithophragma parviflorum (Hook.) T. & G. var. *parviflorum*
Lobelia dunnii var. *serrata* (Gray) McVaugh
Loeflingia squarrosa Nuttall var. *squarrosa*
Loeseliastrum schottii S. Timbrook
Lomatium californicum (T. & G.) Mathias & Constance
Lomatium caruifolium (H. & A.) J.M. Coult. & Rose var. *caruifolium*
Lomatium dissectum var. *multifidum* (T. & G.) Mathias & Constance
Lomatium insulare (Eastw.) Munz
Lomatium lucidum (T. & G.) Jeps.
Lomatium macrocarpum (T. & G.) J. Coulter & Rose
Lomatium nevadense var. *parishii* (J.M. Coult.) Jeps.
Lomatium parvifolium (Hook. & Arn.) Jeps.
Lomatium utriculatum (T. & G.) Coulter & Rose
Lomatium vaginatum J.M. Coult. & Rose
Lonicera interrupta Benth.
Lonicera subspicata Hooker & Arnott var. *subspicata*
Ludwigia palustris (L.) Elliot
Lupinus adsurgens E. Drew var. *adsurgens*
Lupinus adsurgens var. *undulatus* C.P. Smith
Lupinus agardhianus Heller
Lupinus albicaulis Hooker
Lupinus albifrons var. *douglasii* (Agardh) C.P. Smith
Lupinus andersonii S. Watson
Lupinus arbustus Douglas

Common Name

Hairy Poorman's Peppergrass (R)
Granite Prickly Phlox (R)
Granite Prickly Phlox (U)
Baby Tears (R)
Bicolored Linanthus (R)
Short-stemmed Linanthus (R)
Whisker Brush (U)
Tehachapi Linanthus or Flaxflower (R)
Continental Pygmy Linanthus (R)
California Coreopsis (R)
Leafy-stemmed Coreopsis (R)
Peirson's Lessingia (R)
Sierra Lessingia (R)
Sticky Lessingia (R)
Spring Lessingia (U, Type, CNPS 4.3)
Sierra Nevada Bitterroot (R)
Pygmy Bitterroot (R)
Cespitose Wildrye (R)
Hansen's Wildrye (R)
Ocellated Humboldt Lily (U, CNPS 4.2)
Leopard Lily (R)
Marsh Rosemary (R)
Tufted Mudwort (R)
Bigelow Linanthus (R)
Ground Pink (U)
Parry Linanthus (R)
Granite Prickly Phlox (U)
Toadflax (R)
Toadflax (U)
Western Blue Flax (U)
Tiny Lipocarpha (R)
Smooth Star (R)
Hill Star (R)
Prairie Star (U)
Rothrock (Ojai) Lobelia (Type Locality only)
California Loeflingia (U)
Schott Loeseliastrum (R)
California Lomatium (U)
Alkali Desertparsley (R)
Carrotleaf Biscuitroot (U)
San Nicolas Island Lomatium (R)
Shiny Lomatium (U)
Large-fruited Lomatium (U)
Parish's Lomatium (R)
Small-leaved Lomatium (R)
Foothill Lomatium (U)
Broadsheath Lomatium (R)
Chaparral Honeysuckle (U)
Santa Ynez Mountains Honeysuckle (R)
Streamside Water Primrose (R)
Silky Lupine (R)
Wavyleaf Silky Lupine (R)
Lupine (R)
Whitestem Lupine (U)
Island Silver Bush Lupine (U)
Anderson Lupine (U)
Spur Lupine (R)

<u>Scientific Name</u>	<u>Common Name</u>
<i>Lupinus benthamii</i> A. Heller var. <i>benthamii</i>	Spider Lupine (R)
<i>Lupinus breweri</i> Gray var. <i>breweri</i>	Brewer Mat Lupine (U)
<i>Lupinus breweri</i> var. <i>bryoides</i> C.P. Smith	Alpine Brewer Lupine (U)
<i>Lupinus chamissonis</i> Eschsch.	Coastal Bush Lupine (R)
<i>Lupinus concinnus</i> spp. <i>optatus</i> D. Dunn	Bajada Lupine (R)
<i>Lupinus concinnus</i> spp. <i>orcuttii</i> (S. Watson) D. Dunn	Orcutt Bajada Lupine (R)
<i>Lupinus elatus</i> I.M. Johnston	Silky Lupine (CNPS 4.3)
<i>Lupinus excubitus</i> var. <i>johnstonii</i> C.P. Smith	Johnston Bush Lupine (R)
<i>Lupinus formosus</i> var. <i>robustus</i> C.P. Smith	Summer Bush Lupine (U)
<i>Lupinus grayi</i> S. Watson	Gray's Lupine (R)
<i>Lupinus luteolus</i> Kellogg	Butter Lupine (U)
<i>Lupinus paynei</i> Davidson	Payne's Bush Lupine (R, Type)
<i>Lupinus polyphyllus</i> var. <i>burkei</i> (S. Watson) C. Hitchc.	Large-leaved Lupine (R)
<i>Lycium andersonii</i> Gray	Anderson Desert-thorn (R)
<i>Lycium californicum</i> Nuttall ex Gray	California Desert-thorn (R)
<i>Lycium verrucosum</i> Eastwood	San Nicolas Island Desert-thorn (R, Type)
<i>Madia elegans</i> ssp. <i>densifolia</i> (E. Greene) Keck	Dense-flowered Tarplant or Madia (R)
<i>Madia elegans</i> ssp. <i>vernalis</i> Keck	Vernal Tarplant or Madia (R)
<i>Madia elegans</i> ssp. <i>wheeleri</i> (A. Gray) Keck	Wheeler Tarplant or Madia (U)
<i>Madia sativa</i> Molina	Coast Tarplant (R)
<i>Maianthemum racemosum</i> ssp. <i>amplexicaule</i> (Nutt.) LaFrankie	False Solomon's Seal, Wild Lily of the Valley (R)
<i>Maianthemum stellatum</i> (L.) Link	False Solomon's Seal, Wild Lily of the Valley (R)
<i>Malacothamnus fasciculatus</i> var. <i>laxiflorus</i> (Gray) Kearney	Lax-flowered Bushmallow (R)
<i>Malacothamnus marruboides</i> (D. & H.) Greene	Pink-flowered Bush[Globe]mallow (U)
<i>Malacothamnus orbiculatus</i> (E. Greene) E. Greene	Roundleaf Bushmallow (U)
<i>Malacothamnus nuttallii</i> Abrams	Nuttall Bushmallow (Type)
<i>Malacothrix clevelandii</i> Gray	Cleveland Cliff-aster (U)
<i>Malacothrix coulteri</i> Gray	Snake-head (R)
<i>Malacothrix foliosa</i> Gray ssp. <i>foliosa</i>	Leafy Cliff-aster (R, CNPS 4.2)
<i>Malacothrix foliosa</i> ssp. <i>crispifolia</i> W.S. Davis	Leafy Cliff-aster (R, CNPS 1B.2)
<i>Malacothrix foliosa</i> ssp. <i>polycephala</i> W.S. David	Many-headed Leafy Cliff-aster (R)
<i>Malacothrix glabrata</i> A. Gray	Desert Dandelion (R)
<i>Malacothrix incana</i> (Nuttall) Torrey & A. Gray var. <i>incana</i>	Dunedelion (U, CNPS 4.3)
<i>Malacothrix junakii</i> W.S. Davis	Junak Dandelion (R, Type, CNPS 1B.1)
<i>Malacothrix phaeocarpa</i> W.S. Davis	Brown-fruited Dandelion (R, CNPS 4.3)
<i>Malacothrix saxatilis</i> var. <i>altissima</i> (Greene) Ferris	Cliff-aster (R)
<i>Malacothrix saxatilis</i> var. <i>commutata</i> Ferris	Cliff-aster (U)
<i>Malacothrix saxatilis</i> var. <i>implicata</i> (Eastw.) Hall	Implicated Cliff-aster (U, Type)
<i>Malacothrix saxatilis</i> (Nuttall) T. & G. var. <i>saxatilis</i>	Cliff-aster (CNPS 4.2)
<i>Malacothrix similis</i> Davis & Raven	Mexican Cliff-aster (R, CNPS 1A)
<i>Malacothrix squalida</i> Greene	Island Dandelion (R, CNPS 1B.1)
<i>Marah macrocarpus</i> var. <i>major</i> (Dunn) Stocking	Island Man-root (R)
<i>Marsilea vestita</i> Hooker & Greville ssp. <i>vestita</i>	Hairy Pepperwort, Clover Fern (R)
<i>Meconella denticulata</i> E. Greene	Tiny Poppy (R)
<i>Melica californica</i> Scribner var. <i>californica</i>	California Melic Grass (U)
<i>Melica frutescens</i> Scribner	Melic Grass (R)
<i>Melica stricta</i> Bolander var. <i>albicaulis</i>	Whitestem Rock Melic Grass (R)
<i>Mentha arvensis</i> L.	Field Mint (R)
<i>Mentzelia affinis</i> Greene	Stickleaf (R)
<i>Mentzelia albicaulis</i> (Hook.) T. & G.	Whitestem Stickleaf (R)
<i>Mentzelia congesta</i> (Nuttall) T. & G. var. <i>congesta</i>	Congested Stickleaf (U)
<i>Mentzelia congesta</i> var. <i> davidsoniana</i> (Abrams) J.F. Macbr.	Ventana Stickleaf (R)
<i>Mentzelia dispersa</i> S. Watson	Scattered Stickleaf (R)
<i>Mentzelia eremophila</i> (Jeps.) H.J. Thomps. & J.E. Roberts	Pinyon Blazing Star (4.2, R)
<i>Mentzelia gracilentia</i> T. & G.	Slender Stickleaf (R)
<i>Mentzelia pectinata</i> Kellogg	Stickleaf (R)
<i>Mentzelia veatchiana</i> Kellogg	Veatch Stickleaf (R)

<u>Scientific Name</u>	<u>Common Name</u>
<i>Micranthes bryophora</i> (A. Gray) Brouillet & Gornall	Saxifrage (R)
<i>Microseris douglasii</i> (DC.) Schultz-Bip. ssp. <i>douglasii</i>	Douglas Microseris (R)
<i>Microseris douglasii</i> ssp. <i>tenella</i> (A. Gray) Chambers	Slender Douglas Microseris (R)
<i>Microseris elegans</i> A. Gray	Elegant Microseris (R)
<i>Mimulus androsaceus</i> Greene	Naked Sepal Monkeyflower (U)
<i>Mimulus aurantiacus</i> var. <i>parviflorus</i> (Greene) D.M. Thompson	Bush Monkeyflower (R)
<i>Diplacus</i> [<i>Mimulus</i>] <i>bigelovii</i> (A. Gray) Nesom var. <i>bigelovii</i>	Bigelow Monkeyflower (U)
<i>Diplacus</i> [<i>Mimulus</i>] <i>bolanderi</i> (A. Gray) Nesom	Bolander Monkeyflower (R)
<i>Mimulus breweri</i> (E. Greene) Cov.	Brewer Monkeyflower (R)
<i>Mimulus congdonii</i> Robinson	Congdon Monkeyflower (R)
<i>Mimulus constrictus</i> (A.L. Grant) Pennell X <i>Mimulus johnstonii</i> A.L. Grant	Hybrid Narrow-throated Monkeyflower (U)
<i>Mimulus flemingii</i> Munz	Island Bush Monkeyflower (R, CNPS 4.3)
<i>Mimulus fremontii</i> (Benth.) Gray var. <i>fremontii</i>	Fremont Monkeyflower (U)
<i>Mimulus longiflorus</i> var. <i>rutilus</i> A. Grant	Red Sticky Bush Monkeyflower (R)
<i>Mimulus moschatus</i> var. <i>longiflorus</i> A. Gray	Musk Monkeyflower (R)
<i>Mimulus parishii</i> E. Greene	Parish's Monkeyflower (R)
<i>Mimulus primuloides</i> Benth. var. <i>primuloides</i>	Primrose Monkeyflower (U)
<i>Mimulus rattanii</i> Gray	Rattan's Monkeyflower (R)
<i>Mimulus rubellus</i> Gray	Little Redstem Monkeyflower (R)
<i>Mimulus suksdorfii</i> Gray	Suksdorf Monkeyflower (R)
<i>Mimulus tilingii</i> Regel	Creeping Monkeyflower (R)
<i>Sabulina pusilla</i> (S. Watson) Dellenb. & Kadereit	Sandwort (R)
<i>Mirabilis laevis</i> var. <i>villosa</i> (Kellogg) Spellenberg	Woolly Wishbone-bush (R)
<i>Mirabilis multiflora</i> var. <i>pubescens</i> S. Watson	Froebel Four O'Clock (R)
<i>Monanthochloe littoralis</i> Engelm.	Shoregrass (R)
<i>Monardella australis</i> Abrams	Southern Coyote Mint (R)
<i>Monardella hypoleuca</i> Gray ssp. <i>hypoleuca</i>	White-veined Coyote Mint (U)
<i>Monardella linoides</i> A. Gray ssp. <i>linoides</i>	Flax-leaved Horsemint (R)
<i>Monardella linoides</i> ssp. <i>oblonga</i> (Greene) Abrams	Flax-leaved Horsemint (CNPS 1B.3)
<i>Monardella linoides</i> ssp. <i>stricta</i> (Parish) Epling	Flax-leaved Horsemint (R)
<i>Monardella sinuata</i> ssp. <i>gerryi</i> Elvin, A.C. Sanders & R.A. Burgess	Gerry's Curly-leaved Monardella (R, CNPS 1B.1)
<i>Monolepis nuttalliana</i> (Schultes) E. Greene	Nuttall Monolepis, Poverty Weed (R)
<i>Monolopia lanceolata</i> Nuttall	Lanceleaf Hilltop Daisy (R)
<i>Monolopia major</i> DC.	Cupped Daisy (R)
<i>Montia chamissoi</i> (Ledeb. Ex Spreng.) Greene	Toad-Lily (R)
<i>Morella californica</i> (Chamisso & Schltld.) Wilbur	California Wax-Myrtle, Pacific Bayberry (R)
<i>Mucronea californica</i> Benth. var. <i>californica</i>	California Spineflower (R, CNPS 4.2)
<i>Mucronea perfoliata</i> (Gray) A.A. Heller var. <i>perfoliata</i>	Perfoliate Spineflower (R)
<i>Muhlenbergia andina</i> (Nuttall) A. Hitchc.	Foxtail Muhly (R)
<i>Muhlenbergia asperifolia</i> (Nees & Meyen) Parodi	Scratchgrass (U)
<i>Muhlenbergia filiformis</i> (Thurb. ex S. Watson) Rydb. var. <i>filiformis</i>	Pull-Up Muhly (R)
<i>Muhlenbergia richardsonis</i> (Trin.) Rydberg	Mat Muhly (R)
<i>Muhlenbergia utilis</i> (Torrey) A. Hitchc.	Aparejo Grass (R)
<i>Muilla maritima</i> (Torrey) S. Watson	Common Muilla (U)
<i>Myosurus apetalus</i> var. <i>montanus</i> Whittemore	Petaless Mousetails (R)
<i>Myosurus minimus</i> L.	Common Mousetails (R)
<i>Myriophyllum hippuroides</i> Torrey & A. Gray	Western Milfoil (R)
<i>Najas guadalupensis</i> (Sprengel) Magnus	Common Water-nymph, Southern Naiad (R)
<i>Najas marina</i> L.	Spiny Niad (R)
<i>Navarretia atractyloides</i> (Benth.) Hook. & Arn.	Hollyleaf Skunkweed (U)
<i>Navarretia hamata</i> E. Greene ssp. <i>hamata</i>	Skunk Navarretia (R)
<i>Navarretia mellita</i> E. Greene	Sticky Navarretia (R)
<i>Navarretia ojaiensis</i> Elvin, J.M. Porter & L.A. Johnson	Ojai Navarretia (U, CNPS 1B.1)
<i>Navarretia peninsularis</i> Greene	Southern California Navarretia (R)
<i>Navarretia squarrosa</i> (Eschsch.) Hook. & Arn.	Downy Navarretia (R)
<i>Nemacladus californicus</i> (A. Gray) Morin	Parishella (R)
<i>Nemacladus capillaris</i> Greene	Common Nemacladus (R)

Scientific Name

Common Name

<i>Nemacladus glandulerus</i> var. <i>occidentalis</i> McVaugh	Western Sticky Nemacladus (R)
<i>Nemacladus gracilis</i> Eastw.	Slender Nemacladus (R)
<i>Nemacladus orientalis</i> (McVaugh) Morin	Western Sticky Nemacladus (R)
<i>Nemacladus ramosissimus</i> Nuttall	Nuttall's Nemacladus (R)
<i>Nemacladus secundiflorus</i> var. <i>robbinsii</i> Morin	Robbins' Nemacladus (R, CNPS 1B.2)
<i>Nemacladus sigmoideus</i> G.T. Robbins	Thread Stem (R)
<i>Nemophila menziesii</i> var. <i>integrifolia</i> Parish	Baby Blue-eyes (R)
<i>Nemophila parviflora</i> Douglas ex Bentham var. <i>parviflora</i>	Smallflower Nemophila (R)
<i>Nemophila pulchella</i> var. <i>fremontii</i> (A.D.E. Elmer) Constance	Fremont Baby Blue-eyes (R)
<i>Nicotiana attenuata</i> Torrey	Coyote Tobacco (U)
<u><i>Nicotiana clevelandii</i> A. Gray</u>	<u>Cleveland Indian Tobacco (R)</u>
<i>Nicotiana quadrivalis</i> Pursh var. <i>quadrivalis</i>	Indian Tobacco (R)
<i>Nicotiana quadrivalis</i> Pursh var. <i>wallacei</i> (Gray) Mansf.	Wallace's Indian Tobacco (R)
<i>Nolina cismontana</i> Dice	Chaparral Bear-grass (U, CNPS 1B.2)
<i>Notholeana californica</i> D.C. Eaton ssp. <i>californica</i>	California Cloak Fern (R)
<i>Notholithocarpus densiflorus</i> (Hook. & Arn.) Manos, C.H. Cannon, & S. Oh var. <i>densiflorus</i>	Tanbark Oak (R)
<i>Oenothera deltoides</i> ssp. <i>cognata</i> (Jepson) Klein	Birdcage Evening-primrose, Devil's Lantern (R)
<i>Oenothera elata</i> ssp. <i>hookeri</i> (Torrey & A. Gray) W. Dietr.	Hooker Coast Evening Primrose (R)
<i>Oenothera longissima</i> ssp. <i>clutei</i> (Nelson) Munz	Evening Primrose (R)
<i>Oligomeris linifolia</i> (M. Vahl) J.F. Macbr.	Narrowleaf Oligomeris (U)
<i>Opuntia basilaris</i> Engelm. & J. Bigelow var. <i>basilaris</i>	Beavertail Cactus (R)
<u><i>Opuntia littoralis</i> (Engelm.) Cockerell</u> <u><i>XO. oricola</i> Philbr.</u>	<u>Coastal-Round-pad Prickly Pear Hybrid (R)</u>
<i>Opuntia Xoccidentalis</i> Engelm. & Bigelow	Western Pricklypear Cactus (R)
<i>Opuntia oricola</i> Philbr.	Round-pad Prickly Pear (U)
<i>Opuntia Xvaseyi</i> (J. Coulter) Britton & Rose (<i>O. littoralis</i> X <i>phaeacantha</i>)	Mesa Prickly Pear (R)
<i>Orcuttia californica</i> Vasey	California Orcutt Grass (R, FE, SE, CNPS 1B.1)
<i>Orobanche californica</i> ssp. <i>feudgei</i> (Munz) Heckard	California Sagebrush Broom-rape (R)
<i>Orobanche californica</i> ssp. <i>grandis</i> Heckard	Coastal California Broom-rape (R)
<i>Orobanche californica</i> ssp. <i>jepsonii</i> (Munz) Heckard	Jepson Sagebrush Broom-rape (R)
<i>Orobanche parishii</i> ssp. <i>brachyloba</i> Heckard	Short-lobed Broom-rape (R, CNPS 4.2)
<i>Orobanche parishii</i> (Jeps.) Heckard ssp. <i>parishii</i>	Parish Broom-rape (U)
<i>Orobanche uniflora</i> L.	Naked Broomrape (R)
<i>Orobanche valida</i> Jeps. ssp. <i>valida</i>	Rock Creek Broom-rape (R, CNPS 1B.2)
<i>Orobanche vallicola</i> (Jepson) Heckard	Hillside Broomrape (R)
<i>Osmorhiza brachypoda</i> Torrey	Sweet Cicely (U)
<i>Osmorhiza chilensis</i> H. & A.	Mountain Sweetroot (R)
<i>Oxalis albicans</i> Kunth ssp. <i>albicans</i>	Radishroot Woodsorrel (R)
<i>Oxalis albicans</i> ssp. <i>californica</i> (Abrams) G. Eiten	California White Wood Sorrel (R)
<i>Oxalis albicans</i> ssp. <i>pilosa</i> (Nuttall) G. Eiten	Hairy White Wood Sorrel (U)
<i>Oxytheca perfoliata</i> T. & G.	Perfoliate Oxytheca (R)
<i>Oxytheca trilobata</i> A. Gray	Three-lobed Spineflower (R)
<i>Packera breweri</i> (Burt Davy) W.A. Weber & Löve	Brewer Butterweed or Groundsel (U)
<i>Panicum capillare</i> ssp. <i>hillmanii</i> (Chase) Freckmann & Lelong	Hillman Witchgrass (U)
<i>Papaver californicum</i> Gray	Wind or Fire Poppy (R)
<i>Parietaria hespera</i> var. <i>californica</i> B.D. Hinton	California Pellitory (U)
<i>Parietaria pensylvanica</i> Muhlenberg ex Willdenow	Pennsylvania Pellitory (R)
<i>Parthenocissus vitaea</i> (Knerr) Hitchc.	Woodbine (R)
<i>Paspalum distichum</i> L.	Joint Dallis Grass or Knotgrass (U)
<i>Pectocarya heterocarpa</i> I.M. Johnston	Two-faced Pectocarya (R)
<i>Pedicularis densiflora</i> Hook.	Indian Warrior (R)
<i>Pedicularis semibarbata</i> Gray	Pine-woods Lousewort (U)
<i>Pediomelum castoreum</i> (S. Watson) Rydb.	Desert Indian Breadroot (R)
<i>Pellaea mucronata</i> var. <i>californica</i> (Lemmon) Munz & I.M. Johnston	California Birdsfoot Cliffbrake or Fern (R)
<i>Penstemon gracilentus</i> A. Gray	Slender Beardtongue (R)
<i>Penstemon grinnellii</i> Eastwood var. <i>grinnellii</i>	Grinnell Beardtongue (U)
<i>Penstemon heterophyllus</i> var. <i>australis</i> Munz & I.M. Johnston	Southern Mountain Penstemon (R)
<i>Penstemon laetus</i> Gray var. <i>laetus</i>	Gay Penstemon (U)

Scientific Name

Pentachaeta fragilis Brandege
Pentachaeta lyonii Gray
Pentagramma triangularis ssp. *semipallida* (J.T. Howell) Yatsk., Windham, & E. Wollenw.
Pentagramma triangularis ssp. *viscosa* (D.C. Eaton) Yatsk., Windham, & E. Wollenw.
Perideridia gairdneri (Hook. & Arn.) Mathias ssp. *gairdneri*
Perideridia parishii ssp. *latifolia* (Gray) Chuang & Constance
Perideridia pringlei (J.M. Coulter & Rose) A. Nelson & J.F. Macbr.
Peritoma arborea var. *angustata* (Parish) H.H. Iltis
Peritoma arborea var. *globosa* (Coville) H.H. Iltis
Perityle emoryi Torrey
Phacelia affinis Gray var. *affinis*
Phacelia austromontana J.T. Howell
Phacelia bicolor Torrey ex S. Watson
Phacelia cicutaria E. Greene var. *cicutaria*
Phacelia cicutaria var. *hubbyi* (J.F. Macbr.) J.T. Howell
Phacelia ciliata Benth. var. *ciliata*
Phacelia crenulata var. *minutiflora* (J.W. Voss ex Munz) Jepson
Phacelia cryptantha E. Greene
Phacelia exilis (Gray) G.J. Lee
Phacelia grisea Gray
Phacelia humilis var. *dudleyi* J. Howell
Phacelia imbricata ssp. *patula* (Brand) Heckard
Phacelia minor (Harvey) Thellung
Phacelia mohavensis A. Gray
Phacelia mutabilis Greene
Phacelia oreopola Heckard ssp. *oreopela*
Phacelia platyloba A. Gray
Phacelia ramosissima var. *austrolittoralis* Munz
Phacelia ramosissima var. *latifolia* (Torrey) Cronq.
Phacelia rattanii A. Gray
Phacelia viscida var. *albiflora* (Nuttall) A. Gray
Phalaris lemmonii Vasey
Phlox austromontana Coville
Phlox caespitosa Nuttall
Phlox diffusa Benth.
Phlox hoodii ssp. *canescens* (T. & G.) Wherry
Pholistoma membranaceum (Benth.) Constance
Pholistoma racemosum (Nutt. ex A. Gray) Constance
Phoradendron pauciflorum Torrey
Phragmites australis (Cav.) Steudel
Phyla nodiflora (L.) E. Greene var. *nodiflora*
Phyllospadix scouleri Hook.
Phyllospadix torreyi S. Watson
Pickeringia montana Nutt. var. *montana*
Pilularia americana A. Braun
Pinus contorta ssp. *murrayana* (Grev. & Balf.) Critchf.
Pinus coulteri D. Don
Pinus flexilis E. James
Pinus sabiniana Douglas
Piperia cooperi (S. Watson) Rydb.
Piperia elongata Rydb.
Piperia michaelii (Greene) Rydb.
Piperia unalascensis (Spreng.) Rydb.
Plagiobothrys acanthocarpus (Piper) I.M. Johnston
Plagiobothrys arizonicus (Gray) Gray
Plagiobothrys canescens Benth.
Plagiobothrys collinus var. *fulvescens* (I.M. Johnston) Higgins

Common Name

Fragile Pentachaeta (R, CNPS 4.3)
Lyon's Pentachaeta (R, FE, SE, CNPS 1B.1)
Silverback Fern (R)
San Nicolas Island Fern (R)
Gairdner Yampah (R, CNPS 4.2)
Parish Yampah (R)
Adobe or Pringle Yampah (U, CNPS 4.3)
Slender Bladderpod (R)
Burrow-fat Bladderpod (U)
Rock Daisy (U)
Phacelia (R)
Low Phacelia (R)
Bicolored Phacelia (R)
Caterpillar Phacelia (U)
Hubby Caterpillar Phacelia (U, CNPS 4.2)
Ciliate Phacelia (U)
Small-flowered Crenulate Phacelia (R)
Forget-Me-Not Phacelia (R)
Transverse Range Phacelia (R, CNPS 4.3)
White-flowered Phacelia (R)
Dudley Phacelia (R)
Mountain Phacelia (R)
Wild Canterbury Bell (R)
Mojave Phacelia (R, CNPS 4.3)
Changeable Phacelia (R)
Mountain Phacelia (R)
Phacelia (R)
South Coast Branching Phacelia (R, CNPS 3.2)
Branching Phacelia (U)
Brand Phacelia (R)
White-flowered Viscid Phacelia (R)
Lemmon Canarygrass (R)
Spreading Phlox (R)
Rigid Mat Phlox (R)
Mat Phlox (R)
Fuzzy Hood Phlox (R)
White Fiesta Flower (U)
South Coast Fiesta Flower (R)
Few-flowered Mistletoe (R)
Common Reed (R)
Common Frog-fruit (R)
Scouler Surf-grass (R)
Torrey Surf-grass (U)
Chaparral Pea (U)
American Pillwort (R)
Lodgepole Pine (R)
Coulter Pine (R)
Limber Pine (R)
Foothill or Gray Pine (R)
Chaparral Rein Orchid (R, CNPS 4.2)
Dense-flowered Rein Orchid (R)
Michael Piperia (R, CNPS 4.2)
Slender-spire Orchid (R)
Adobe Popcornflower (R)
Arizona Popcornflower (R)
Valley or Bracted Popcornflower (R)
Popcornflower (R)

Scientific Name

Common Name

<i>Plagiobothrys collinus</i> var. <i>gracilis</i> (A. Gray) Higgins	Slender California Popcornflower (R)
<i>Plagiobothrys hispidulus</i> (E. Greene) I.M. Johnston	Hispid Popcornflower (R)
<i>Plagiobothrys leptocladus</i> (E. Greene) I.M. Johnston	Alkali Popcornflower (R)
<i>Plagiobothrys tenellus</i> (Nuttall) A. Gray	Slender Popcornflower (R)
<i>Plagiobothrys undulatus</i> (Piper) I.M. Johnston	Undulate Popcornflower (R)
<i>Plantago elongata</i> Pursh	Coastal Plantain (R)
<i>Plantago ovata</i> var. <i>fastigiata</i> (Morris) S.C. Meyers & A. Liston	Ovate Plantain (U)
<i>Plantago ovata</i> var. <i>insularis</i> (Eastw.) S.C. Meyers & A. Liston	Ovate Plantain (U)
<i>Plantago patagonica</i> Jacq.	Patagonia Plantain (R)
<i>Plantago pusilla</i> Nuttall	Plantain (R)
<i>Platanthera leucostachys</i> Lindley	White-flowered Bog-Orchid (R)
<i>Platanthera sparsiflora</i> (S. Watson) Schltr.	Few-flowered Rein Orchid (R)
<i>Plectritis ciliosa</i> ssp. <i>insignis</i> (Suksd.) D. Morey	Petite Long-spurred Plectritis (R)
<i>Plectritis macrocera</i> Torrey & A. Gray	White Plectritis (R)
<i>Pluchea odorata</i> (L.) Cass.	Saltmarsh Fleabane (U)
<i>Pluchea sericea</i> (Nutt.) Coville	Arrow Weed (R)
<i>Poa howellii</i> Vasey & Scribn.	Howell's Bluegrass (R)
<i>Poa secunda</i> ssp. <i>juncifolia</i> (Scribner) R. Soreng	Rush Bluegrass (R)
<i>Polemonium micranthum</i> Benth.	Phlox (U)
<i>Polycarpon depressum</i> Nutt.	California Allseed (R)
<i>Polygala cornuta</i> var. <i>fishiae</i> (C. Parry) Jeps.	Fish Milkwort (CNPS 4.3)
<i>Polygonum amphibium</i> var. <i>emersum</i> Michx.	Kelp, Water-Smartweed (R)
<i>Polygonum douglasii</i> ssp. <i>johnstonii</i> (Munz) J. Hickman	Sawatch Knotweed (R)
<i>Polygonum hydropiperoides</i> Michaux	Mild Water Pepper, Water Smartweed (R)
<i>Polygonum lapathifolium</i> L.	Willow Weed (U)
<i>Polygonum polygaloides</i> ssp. <i>kelloggii</i> (Greene) J. Hickman	Kellogg Knotweed (R)
<i>Polygonum punctatum</i> Elliott	Dotted Smartweed (U)
<i>Polygonum sawatchense</i> Small ssp. <i>sawatchense</i>	Sawatch Smartweed (R)
<i>Polypodium hesperium</i> Maxon	Western Polypody (R)
<i>Polystichum imbricans</i> ssp. <i>curtum</i> (Ewan) D.H. Wagner	Imbricate Sword Fern (U)
<i>Polystichum imbricans</i> (D.C. Eaton) D.H. Wagner ssp. <i>imbricans</i>	Imbricate Sword Fern (R)
<i>Polystichum munitum</i> (Kaulf.) C. Presl	Western Sword Fern (R)
<i>Populus Xparryi</i> Sargent	Parry's Cottonwood (R)
<i>Populus trichocarpa</i> Torrey & A. Gray	Black Cottonwood (Type)
<i>Potamogeton foliosus</i> Raf. var. <i>foliosus</i>	Leafy Pondweed (U)
<i>Potamogeton nodosus</i> Poiret	Long-leaved Pondweed (R)
<i>Potentilla biennis</i> Greene	Biennial Cinquifol (R)
<i>Potentilla gracilis</i> var. <i>elmeri</i> (Rydb.) Jeps.	Elmer Slender Cinquifol (U, Type)
<i>Prunus emarginata</i> (Hooker) Walp.	Bitter Cherry (R)
<i>Prunus ilicifolia</i> ssp. <i>lyonii</i> (Eastw.) P. Raven	Catalina Cherry (R)
<i>Pseudognaphalium beneolens</i> (A. Gray) Anderberg	Coastal Everlasting (U)
<i>Pseudognaphalium leucocephalum</i> (A. Davidson) Anderberg	Whiteleaf or Sonora Everlasting (CNPS 2.2)
<i>Pseudognaphalium ramosissimum</i> (Nutt.) Anderberg	Pink Everlasting (U)
<i>Pseudostellaria jamesiana</i> (Torrey) W.A. Weber & R.I. Hartman	False Chickweed (R)
<i>Psilocarphus brevissimus</i> Nutt. var. <i>brevissimus</i>	Woolly Marbles (R)
<i>Psilocarphus chilensis</i> A. Gray	Round Woolly Marbles (R)
<i>Pterospora andromedea</i> Nutt.	Woodland Pinedrops (R)
<i>Purshia tridentata</i> var. <i>glandulosa</i> (Curran) M.E. Jones	Antelope Bush (U)
<i>Pyrola asarifolai</i> Michx. ssp. <i>asarifolia</i>	Bog Wintergreen (R)
<i>Pyrola picta</i> Smith	White-veined Wintergreen (R)
<i>Pyrrocoma racemosa</i> var. <i>paniculata</i> (Nutt.) J. Kartesz & K. Gandhi	Pyrrocoma (R)
<i>Quercus Xalvordiana</i> Eastwood (<i>Q. douglasii</i> X <i>Q. john-tuckeri</i>)	Alvord Oak (R)
<i>Quercus douglasii</i> H. & A.	Blue Oak (R)
<i>Quercus dumosa</i> Nutt.	Nuttall or Coastal Sage Scrub Oak (R, CNPS 1B.1)
<i>Quercus Xmacdonaldii</i> Greene	MacDonald Oak (R)
<i>Quercus Xmoreha</i> Kellogg	Oracle Oak (R)
<i>Quercus palmeri</i> Engelm.	Palmer Oak (R)

<u>Scientific Name</u>	<u>Common Name</u>
<u><i>Quercus tomentella</i> Engelm.</u>	<u>Channel Island Oak (R)</u>
<i>Quercus turbinella</i> Greene ssp. <i>turbinella</i>	Sonoran Scrub Oak (R)
<i>Ranunculus aquatilis</i> var. <i>capillaceus</i> (Thuill.) DC.	Slender White Water Crowsfoot (R)
<i>Ranunculus canus</i> var. <i>ludovicianus</i> (E. Greene) L.D. Benson	Transverse Ranges Buttercup (R)
<i>Rhamnus tomentella</i> ssp. <i>cuspidata</i> (Greene) Sawyer	Cuspid Hoary Coffeeberry (R)
<i>Rhus integrifolia</i> (Nutt.) Brewer & S. Watson XR. <i>ovata</i> S. Watson	Lemonade Berry-Sugar Bush Hybrid (R)
<i>Rhus trilobata</i> var. <i>malacophylla</i> (E. Greene) Jepson	Woolly Skunkbrush (U)
<i>Ribes amarum</i> McClatchie var. <i>amarum</i>	Bitter Gooseberry (R)
<i>Ribes amarum</i> var. <i>hoffmannii</i> Munz	Hoffmann's Bitter Gooseberry (R, CNPS 3)
<i>Ribes aureum</i> var. <i>gracillimum</i> (Cov. & Britton) Jeps.	Slender Golden Currant (R)
<i>Ribes cereum</i> Douglas var. <i>cereum</i>	Wax Currant (U)
<i>Ribes indecorum</i> Eastw.	White-flowered Currant (R)
<i>Ribes montigenum</i> McClatchie	Mountain Gooseberry (R)
<i>Ribes nevadense</i> Kellogg	Mountain Pink Currant (R)
<i>Ribes quercetorum</i> Greene	Oak Gooseberry (U)
<i>Ribes roezlii</i> Regel var. <i>roezlii</i>	Sierra Gooseberry (U)
<i>Ribes velutinum</i> Greene	Plateau Gooseberry (R)
<i>Rigiopappus leptocladus</i> Gray	Rigiopappus (U)
<i>Romneya coulteri</i> Harvey	Coulter Matilija Poppy (U, CNPS 4.2)
<i>Rorippa curvisiliqua</i> (Hooker) Bessey ex Britton	Curved-pod Water- cress (R)
<i>Rorippa palustris</i> (L.) Besser var. <i>palustris</i>	Western Riparian Yellow-cress (R)
<i>Rosa woodsii</i> ssp. <i>ultramontana</i> (S. Watson) Roy L. Taylor & MacBryde	Interior Wild Rose (R)
<i>Rosa woodsii</i> ssp. <i>gratissima</i> (E. Greene) W.H. Lewis & Ertter	Mojave Wild Rose (R)
<i>Rotala ramosoira</i> (L.) Koehne	Lowland Toothcup (R)
<i>Rubus leucodermis</i> Torrey & A. Gray	Whitebark Raspberry (R)
<i>Rubus parviflorus</i> Nuttall	Thimbleberry (R)
<i>Rumex californicus</i> Rech. f.	California Dock (U)
<i>Rumex crassus</i> Rech. f.	Willow-leaved Dock (R)
<i>Rumex fueginus</i> Phil. var. <i>ovato-cordatus</i> Rech.f	Oxnard Dock (R, Type)
<i>Rumex hymenosepalus</i> Torrey	Wild Rhubarb, Canaigre (U)
<i>Rumex transitorius</i> Rech. f.	Transitory Dock (R)
<i>Rumex violascens</i> Rech. f.	Violet Dock (R)
<i>Rupertia physodes</i> (Hook.) Grimes	Scurf-pea (R)
<i>Ruppia cirrhosa</i> (Petagna) Grande	Spiral Wigeon-grass or Ditch-grass (R)
<i>Ruppia maritima</i> L.	Wigeon-grass, Ditch-grass (R)
<i>Sagina decumbens</i> ssp. <i>occidentalis</i> (S. Wats.) G. Crow	Western Pearlwort (R)
<i>Sagina saginoides</i> (L.) H. Karst.	Sagina, Arctic Pearlwort (R)
<i>Sagittaria sanfordii</i> Greene	Sanford Arrow-head (R, CNPS 1B.2)
<i>Salicornia bigelovii</i> Torrey	Bigelow Pickleweed (R)
<i>Salicornia depressa</i> Standley	Pickleweed (R)
<i>Salix gooddingii</i> C. Ball	Goodding Black Willow (R)
<u><i>Salix lasiolepis</i> var. <i>bigelovii</i> (Torrey) Bebb.</u>	<u>Bigelow Arroyo Willow (R)</u>
<i>Salix melanopsis</i> Nuttall	Dusky Willow (R)
<i>Saltugilia australis</i> (H. Mason & A.E. Grant) L.A. Johnson	Southern Gilia (R)
<i>Saltugilia latimeri</i> T.L. Weese & L.A. Johnson	Latimer's Gilia (R, 1B.2)
<i>Salvia Xbernardina</i> Parish ex Greene	Bernard's Sage (R)
<i>Salvia carduacea</i> Benth.	Thistle Sage (R)
<i>Salvia dorrii</i> var. <i>pilosa</i> (Gray) Strachan & Reveal	Pilose Desert Sage (R)
<i>Samolus parviflorus</i> Raf.	Water-pimpernel (R)
<i>Sanicula bipinnatifida</i> Hooker	Purple Sanicle (R)
<i>Sanicula graveolens</i> Peopp. ex DC.	Sanicle (R)
<i>Sanicula tuberosa</i> Torrey	Tuberosa Sanicle (R)
<i>Sarcodes sanguinea</i> Torrey	Snow Plant (U)
<i>Saussurea americana</i> D. Eaton	American Sawwort (R)
<i>Schoenoplectus acutus</i> var. <i>occidentalis</i> (S. Watson) S.G. Smith	Viscid Tule (U)
<i>Schoenoplectus californicus</i> (C. Meyer) Soják, Čas. Nár.	California Bulrush (U)
<i>Schoenoplectus pungens</i> var. <i>badius</i> (J. Presl & C. Presl) S.G. Smith	Common Threesquare (U)

Scientific Name

Schoenoplectus pungens var. *longispicatus* (Britton) S.G. Smith
Schoenoplectus saximontanus (Fern.) J. Raynal
Schoenoplectus tabernaemontani (C. Gmelin) Palla
Scirpus microcarpus J. Presl & C. Presl
Scrophularia californica ssp. *floribunda* (E. Greene) Shaw
Senecio aphanactis Greene
Senecio flaccidus var. *monoensis* (Greene) B.L. Turner & T.M. Barkley
Setaria gracilis Kunth
Setaria parviflora (Poir.) Kerguelen
Shepherdia argentea Nutt.
Sidalcea malviflora ssp. *dolosa* C.L. Hitchc.
Sidalcea neomexicana Gray
Sidalcea pedata Gray
Sidothea caryophylloides (C. Parry) Reveal
Silene antirrhina L.
Silene bernardina S. Watson
Silene laciniata ssp. *californica* (Durand) J.K. Morton
Silene lemmonii S. Watson
Solanum parishii A.A. Heller
Solanum umbelliferum Eschsch.
Solanum wallacei (A. Gray) Parish
Solidago guiradonis Gray
Solidago velutina ssp. *sparsiflora* (A. Gray) Semple
Spergularia macrotheca var. *leucantha* (E. Greene) Robinson
Sphaeralcea ambigua A. Gray var. *ambigua*
Sphenosciadium capitellatum Gray
Sporobolus airoides (Torey) Torrey
Stachys ajugoides Benth.
Stachys rigida Benth. var. *rigida*
Stebbinsoseris heterocarpa (Nuttall) Chambers
Stellaria nitens Nuttall
Stephanomeria exigua Nuttall ssp. *exigua*
Stephanomeria virgata ssp. *pleurocarpa* (Greene) Gottlieb
Stillingia linearifolia S. Watson
Stillingia spinulosa Torrey
Stipa arida M.E. Jones
Stipa diegoensis Swallen

Stipa occidentalis S. Watson var. *occidentalis*
Stipa occidentalis var. *pubescens* (Vasey) J.R. Maze et al.
Stipa parishii Vasey var. *parishii*
Stipa thurberiana Piper
Streptanthus campestris S. Watson
Stuckenia pectinata (L.) Börner
Stylocline gnaphaloides Nuttall
Stylomecon heterophylla (Benth.) G. Taylor
Suaeda calceoliformis (Hook.) Moq.
Suaeda californica S. Watson var. *californica*
Suaeda californica var. *pubescens* Jepson
Suaeda taxifolia (Standl.) Standl.
Suaeda esteroa Ferren & Whitmore
Suaeda nigra (Rafinesque) J.F. Macbride
Swertia neglecta (H.M. Hall) Jeps.
Symphoricarpos albus var. *laevigatus* (Fern.) S.F. Blake
Symphotrichum ascendens (Lindl.) G.L. Nesom
Symphotrichum greatae (Parish) G.L. Nesom
Symphotrichum lanceolatum var. *hesperium* (A. Gray) G.L. Nesom
Syntrichopappus lemmonii (A. Gray) A. Gray

Common Name

Common Threesquare (U)
 Rocky Mountain Bulrush (R)
 Soft-stem Bulrush (R)
 Small-fruited Bulrush (U)
 Many-flowered Figwort (R)
 Rayless Ragwort (R)
 Mono Butterweed (R)
 Knotroot Bristlegrass (R)
 Knotroot Bristlegrass (R)
 Buffalo Berry, Silver Buffaloberry (U)
 Dwarf Globemallow or Checkerbloom (R)
 Salt Spring Checkermallow (R, CNPS 2.2)
 Bird-footed Checkerbloom (R)
 Chickweed Oxytheca (R, CNPS 4.3)
 Snapdragon Campion, Catchfly (U)
 Palmer Campion (R)
 California Indian Pink (R)
 Lemmon Campion or Catchfly (R)
 Parish Nightshade (R)
 Blue Witch (U)
 Wallace's Nightshade (R)
 Guirado Goldenrod (R, CNPS 4.2)
 Few-leaved Goldenrod (R)
 White Large[-flowered] Sandspurrey (R)
 Apricot Mallow (R)
 Ranger Buttons, Swamp White Heads (R)
 Alkali Sacaton (R)
 Hedge Nettle (R)
 Rigid Hedge Nettle (U)
 Chicory Microseris (U)
 Shining Chickweed (U)
 Small Stephanomeria (R)
 Two-fruited Wreath Plant (R)
 Narrowleaf Stillingia (R-extirpated?)
 Annual Toothleaf (R-extirpated?)
 Mormon Needlegrass (R)
 San Diego Needlegrass (CNPS 4.2)
 Western Needlegrass (R)
 Elmer Needlegrass (R)
 Parish Needlegrass (R)
 Thurber Needlegrass (R)
 Southern Jewelflower (R, CNPS 1B.3)
 Fennel-leaf Pondweed (R)
 Everlasting Nest Straw (U)
 Wind Poppy (U)
 Seablite (R)
 California Seablite (R, FE, CNPS 1B.1)
 Hairy California Seablite (FE, CNPS 1B.1)
 Woolly Seablite (O, CNPS 4.2)
 Estuary Seablite (R, CNPS 1B.2)
 Bush Seepweed (R)
 Pine Green Gentian (CNPS 4.3)
 Snowberry (R)
 Long-leaved Aster (R)
 Greata's Aster (R, CNPS 1B.3)
 Siskiyou Aster (R)
 Lemmon's Xerasid (R, CNPS 4.3)

Scientific Name

Tauschia hartwegii (A.Gray) J.F. Macbr.
Tetradymia canescens DC.
Tetradymia comosa Gray
Tetrapteron graciliflorum (Hooker & Arnott) W.L. Wagner & Hoch
Thalictrum fendleri Engelman ex Gray
Thalictrum polycarpum (Torrey) S. Watson
Thermopsis californica var. *argentata* (Greene) Chen & Turner
Thermopsis macrophylla Hooker & Arnott var. *macrophylla*
Thermopsis macrophylla var. *venosa* (Eastwood) Isely
Thysanocarpus conchuliferus E. Greene
Trichostema austromontanum Harlan Lewis ssp. *austromontanum*
Trichostema micranthum Gray
Trichostema ovatum Curran
Trifolium bifidum var. *decipiens* E. Greene
Trifolium ciliolatum Benth.
Trifolium cyathiferum Lindley
Trifolium depauperatum var. *amplectens* (T. & G.) L.F. McDermott
Trifolium depauperatum var. *truncatum* (Greene) Islay
Trifolium dictotomum H. & A.
Trifolium fucatum Lindley
Trifolium longipes ssp. *atrorubens* (Greene) J.M. Gillett
Trifolium microdon Hook. & Arn.
Trifolium monanthum var. *grantianum* (A.A. Heller) Parish
Trifolium monanthum Gray var. *monanthum*
Trifolium obtusiflorum Hooker & Arnott
Trifolium palmeri S. Watson
Trifolium variegatum var. *major* Lojac.
Trifolium wormskioldii Lehm.
Triglochin concinna Davy var. *concinna*
Triglochin maritima L.
Triglochin striata R. & P.
Triteleia ixioides (Aif. F.) Greene ssp. *ixioides*
Tropidocarpum gracile Hook. [var. *dubium*]
Typha angustifolia L.
Typha latifolia L.
Typha Xdomingensis Pers.
Veratrum californicum Durand var. *californicum*
Verbena bracteata Lagasca & J.D. Rodriguez
Verbena lasiostachys var. *scabrida* Mold.
Veronica peregrina ssp. *xalapensis* (Kunth) Pennell
Veronica serpyllifolia ssp. *humifusa* (Dickson) Syme
Vicia americana Willd. ssp. *americana*
Vicia hassei S. Watson
Vicia ludoviciana Nutt. var. *ludoviciana*
Viola aurea Kellogg
Viola macloskeyi F.E. Lloyd ssp. *macloskeyi*
Viola pedunculata ssp. *tenuifolia* M.S. Baker & J.C. Clausen
Viola pinetorum ssp. *grisea* (Jeps.) R.J. Little
Viola pinetorum Greene ssp. *pinetorum*
Viola purpurea ssp. *mohavensis* (M. Baker & J. Clausen) J. Clausen
Viola purpurea Kellogg ssp. *purpurea*
Vitis californica Benth.
Vitis girdiana Munson
Vulpia microstachys var. *confusa* (Piper) Lonard & Gould
Yabea microcarpa (Hooker & Arnott) Koso-Pol.
Zannichellia palustris L.
Zostera marina L.

Common Name

Hartweg Tauschia (U)
 Cottonthorn, Horsebush (R)
 Cottonthorn, Horsebush (R)
 Hill Sun-cup (U)
 Fendler Meadow-rue (R)
 Tall Western Meadow-rue (R)
 Silvery False-Lupine (U, CNPS 4.3)
 Santa Ynez False-Lupine (R, SR, CNPS 1B.3)
 Slender Santa Ynez False-Lupine (R)
 Santa Cruz Island Fringepod (R)
 San Jacinto Bluecurls (R)
 Bluecurls (R)
 Ovate Bluecurls (R)
 Pinole Clover (R)
 Ciliate or Tree Clover (U)
 Ciliate or Tree Clover (R)
 Dwarf Sack Clover (R)
 Truncate Dwarf Sack Clover (U)
 Island Rancheria Clover (R)
 Bull Clover (U)
 Purple Clover (R)
Tiny-head Clover (R)
 Carpet Clover (R)
 Carpet Clover (R)
 Creek Clover (U)
 Palmer Pinpoint Clover (R)
 Large Whitetip Clover (R)
 Cows Clover (R)
 Utah Arrow-grass (R)
 Seaside Arrow-grass (R)
 Three-ribbed Arrow-grass (R)
 Golden Brodiaea (R)
 Slender Tropicocarpum (R)
 Slender Cattail (R)
 Broad-leaved Cattail, Soft Flag (U)
 Southern Cattail Hybrid (R)
 California False Hellebore (R)
 Prostrate Verbena (R)
 Western Verbena (R)
 Purslane Speedwell (U)
 Tyme-leaved Speedwell (R)
 American Vetch (U)
 Hasse Vetch (R)
 Vetch (R)
 Golden Violet (R)
 Small White Violet (R)
 Johnny-Jump-Up (R)
 Gray-leaved Violet (R, CNPS 1B.3)
 Mountain Violet (U)
 Mojave Yellow Violet (U)
 Purple or Mountain Violet (U)
 California Wild Grape (R)
 Desert Wild Grape (R)
 Ciliate Fescue (R)
 Yabea (R)
 Horned-Pondweed (R)
Eel-grass (R)

Plants Expected to Occur in Ventura County But Lacking Physical Evidence¹⁵

Scientific Name

Abronia latifolia Eschsch.
Achnatherum latiglumis (Swallen) Barkworth
Actaea rubra (Aiton) Willdenow
Adiantum aleuticum (Rupr.) C.A. Paris
Agastache urticifolia (Bentham) Kuntze var. *urticifolia*
Agrostis microphylla Steudel
Agrostis scabra Willd.
Allenrolfea occidentalis (S. Watson) Kuntze
Alopecurus aequalis Sobol. var. *aequalis*
Alopecurus geniculatus L.
Ambrosia dumosa (A. Gray) Payne
Amsinckia eastwoodae J.F. Macbr.
Anaphalis margaritacea (L.) Benth. & Hooker F. ex C.B. Clarke
Arabis platysperma Gray var. *platysperma*
Aristida purpurea var. *nealleyi* (Vasey) K.W. Allred
Aristida purpurea var. *wrightii* (A. Hitchc.) K.W. Allred
Artemisia ludoviciana ssp. *incompta* (Nuttall) Keck
Aster occidentalis (Nuttall) Torrey & A. Gray var. *occidentalis*
Athyrium filix-femina var. *californicum* Butters
Athyrium filix-femina var. *cyclosorum* Ruprecht
Azolla mexicana C. Presl
Berberis pinnata Lagasca ssp. *pinnata*
Brodiaea elegans Hoover ssp. *elegans*
Brodiaea jolonensis Eastwood
Calystegia longipes (S. Watson) Brummitt
Calystegia sepium ssp. *limnophila* (E. Greene) Brummitt
Carex serratodens W. Boott
Castilleja campestris (Bentham) Chuang & Heckard ssp. *campestris*
Castilleja densiflora ssp. *gracilis* (Benth.) Chuang & Heckard
Castilleja gyroloba Pennell
Caulanthus crassicaulis (Torrey) S. Watson var. *crassicaulis*
Celtis reticulata Torrey
Centaurium muhlenbergii (Griseb.) W. Wright ex Piper
Centromadia fitchii (A. Gray) E. Greene
Cephalanthera austiniiae (A. Gray) Heller
Chamaesyce serpyllifolia ssp. *hirtula* (S. Watson) Koutnik
Chenopodium littoreum Benet-Pierce & M.G. Simpson
Chenodium rubrum var. *humile* (Hooker) S. Watson
Chorizanthe fimbriata Nuttall var. *fimbriata*
Chorizanthe obovata Goodman
Chorizanthe wheeleri S. Watson
Circaea alpina ssp. *pacifica* (Aschers. & Magnus) Raven
Cladium californicum (S. Watson) O'Neill
Clarkia similis Harlan Lewis & Ernst
Clematis pauciflora Nuttall
Collomia linearis Nuttall
Comarostaphylis diversifolia ssp. *planifolia* (Jeps.) G.D. Wallace
Corallorhiza maculata (Raf.) Raf.
Cornus nuttallii Audubon

Common Name

Coastal or Yellow Sand-verbena Φ
 Needlegrass Φ
 Red Banberry Φ
 Western Five-finger Fern or Maidenhair Φ
 Nettleleaf Horsemint, Giant Hyssop Φ
 Small-leaved Bentgrass Φ
 Rough Bentgrass Φ
 Iodine Bush Φ
 Short-awn Foxtail Φ
 Water Foxtail Φ
 White Bur-sage, Burro Bush, Burro-Weed Φ
 Elegant Fiddleneck Φ
 Pearly Everlasting Φ
 Pioneer Rock Cress Φ
 Nealley Three-awn Grass Φ
 Parish Three-awn Grass Φ
 White Sagebrush Φ
 Western Mountain Aster Φ
 Southwestern Lady Fern Φ
 Northwestern Lady Fern Φ
 Mexican Duckweed Fern Φ
 Pinnate-leaved Barberry Φ
 Elegant Brodiaea Φ
 Dwarf Brodiaea Φ
 Morning-glory Φ
 Riparian Morning-glory Φ
 Sawtooth Sedge Φ
 Field Owl's Clover Φ
 Slender Dense-flowered Owl's Clover Φ
 Indian Paintbrush Φ
 Thick-stem Wild Cabbage Φ
 Netleaf Hackberry Φ
 Monterey Centaury Φ
 Fitch Spikeweed Φ
 Phantom Orchid Φ
 Hairy Thyme-leaved Spurge Φ
 Coastal Goosefoot Φ
 Red Goosefoot Φ
 Fringed Spineflower (R) – Newhall Ranch
 Obovate Spineflower Φ
 Wheeler Spineflower Φ
 Enchanter's Nightshade Φ
 Saw-grass Φ
 Copy-cat Clarkia Φ
 Ropevine Φ
 Narrow-leaved Collomia Φ
 Simpleleaf Summer Holly Φ
 Spotted Coral Root Φ
 Mountain Dogwood Φ

¹⁵ Taxa that are expected to occur within Ventura County but for which no vouchers have been collected or a knowledgeable botanist observed it (and documented its occurrence). If any of these taxa are found within Ventura County, they should be considered locally rare species. Plants with a “Φ” following the common name lack vouchers from Ventura County at the following herbaria (CAS, CDA, CHSC, DAV, IRVC, JEPS, NY, POM, RSA, SBBG, SD, SJSU, UC, UCI, UCR, UCSB, USSC).

Scientific Name

Cornus sericea ssp. *occidentalis* (Torrey & A. Gray) Fosberg
Crassula solieri (C. Gay) F. Meigen
Cuscuta californica var. *papillosa* Yuncker
Cyperus niger Ruiz Lopez & Pavon
Damasonium californicum Benth
Deschampsia elongata (Hooker) Benth
Descurainia incisa (A. Gray) Britton ssp. *incisa*
Dodecatheon clevelandii E. Greene ssp. *clevelandii*
Elatine rubella Rydb.
Eleocharis parvula (Roemer & Schultes) Link
Epilobium halleanum Hausskn.
Epilobium minutum Lindl. ex. Lehm.
Eremalche parryi ssp. *kernensis* (C. Wolf) D. Bates
Erigeron foliosus var. *franciscensis* G.L. Nesom
Erigeron philadelphicus L.
Eriophyllum ambiguum (A. Gray) A. Gray var. *ambiguum*
Eriophyllum lanatum var. *hallii* Constance
Eschscholzia lemmonii ssp. *kernensis* (Munz) C. Clark
Eustoma exaltatum (L.) Don
Euphorbia crenulata Engelm
Galium californicum ssp. *flaccidum* (E. Greene) Dempster & Stebb.
Gayophytum humile A.L. Juss.
Gayophytum oligospermum H. Lewis & J. Szweykowski
Geranium carolinianum L.
Geranium richardsonii Fischer & Trautv.
Gilia tricolor Benth ssp. *tricolor*
Glyptopleura marginata D. Eaton
Grayia polygaloides Hooker & Arnott
Helianthus californicus DC.
Hesperolinon micranthum (A. Gray) Small
Hesperomecon linearis (Benth) E. Greene
Hordeum jubatum L.
Hydrocotyle ranunculoides L.f.
Hymenoclea monogyra Torrey & Gray
Hymenoclea salsola var. *pentalepis* (Rydb.) L. Benson
Iris douglasiana Herbert in W.J. Hooker and G.A.W. Arnott
Isoetes orcuttii A.A. Eaton
Juncus bryoides F.J. Hermann
Juncus falcatus E. Meyer var. *falcatus*
Juncus orthophyllus Cov.
Lasthenia fremontii (A. Gray) E. Greene
Layia hieracioides (DC.) Hooker & Arnott
Lepidium latipes Hooker var. *latipes*
Lilaea scilloides (Poir.) Haum.
Lonicera hispidula var. *vacillans* A. Gray
Lonicera interrupta Benth. X *Lonicera hispidula* var. *vacillans* Gray
Luzula comosa E. Meyer
Luzula subsessilis (S. Watson) Buchenau
Mimulus palmeri A. Gray
Minuartia californica (A. Gray) Mattf.
Monardella australis Abrams
Monardella villosa ssp. *obispoensis* (Hoover) Jokerst
Najas marina L.
Nemophila parviflora var. *quercifolia* (Eastw.) Chandler
Opuntia phaeacantha Engelm.
Orthocarpus linearilobus Benth
Osmorhiza chilensis Hooker & Arnott

Common Name

Western American Dogwood Φ
Solier Vernal Pool Water Pigmy-weed Φ
California Dodder Φ
Black Flatsedge Φ
Fringed Water-Plantain Φ
Slender Hairgrass Φ
Richardson Tansy Mustard Φ
Cleveland Shooting Star Φ
Waterwort Φ
Colorado Spike-rush Φ (CNPS 4.3)
Gland Willowherb Φ
Chaparral Willowherb Φ
Kern Mallow Φ
San Francisco Leafy Fleabane Φ
Philadelphia Fleabane Φ
Ambiguous Woolly Daisy Φ
Fort Tejon Yarrow Φ
Tejon Poppy Φ
Catchfly Gentian Φ
Chinese Caps Φ
California Bedstraw Φ
Low Gayophytum Φ
Southern California Mountain Gayophytum Φ
Cransebill, Carolina Geranium Φ
Mountain Geranium Φ
Birds-eye or Tricolor Gilia Φ
Sculpted-fruit Φ
Hop-Sage Φ
California Sunflower Φ
Dwarf Flax Φ
Western Poppy Φ
Foxtail Barley Φ
False-crowfoot Pennywort Φ
Leafy Burrobrush Φ
Southern Burrobrush Φ
Mountain Iris Φ
Orcutt Quillwort Φ
Moss Rush Φ
Sickleleaf Rush Φ
Straight-leaf Rush Φ
Fremont Goldfields Φ
Tall Layia Φ
Dwarf Peppergrass Φ
Flowering Quillwort Φ
California Honeysuckle Φ
Chaparral Honeysuckle hybrid Φ
Wood Rush Φ
Wood Rush Φ
Palmer Monkeyflower Φ
California Sandwort Φ
Southern Coyote Mint Φ
San Luis Obispo Coyote Mint Φ
Spiny Naiad Φ
Oak-leaved Nemophila (R)
Engelmann Prickly Pear Φ
Pallid Owl's Clover Φ
Mountain Sweetroot or Sweet Cicely Φ

Scientific Name

Panicum acuminatum Sw. var. *acuminatum*
Parnassia californica (A. Gray) E. Greene
Penstemon spectabilis Thurber var. [ssp.] *spectabilis*
Penstemon spectabilis var. [ssp.] *subviscosus* (Keck) McMinn
Phacelia congdonii Greene
Phoradendron libocedri (Engelm.) Howell
Physalis acutifolia (Miers) Sandw.
Plagiobothrys collinus var. *californicus* (A. Gray) Higgins
Plectritis brachystemon Fischer & C. Meyer
Pogogyne zizyphoroides Benth
Polygonum amphibium var. *stipulaceum* Coleman
Polygonum douglasii E. Greene ssp. *douglasii*
Quercus garryana var. *breweri* (Engelm.) Jeps.
Ranunculus aquatilis var. *capillaceus* (Thuill.) DC.
Rubus leucodermis var. *bernardinus* (E. Greene) Jepson
Rubus parviflorus Nuttall
Sagittaria calycina Englemann
Sagittaria latifolia Willd.
Salix sitchensis Bong.
Sanicula hoffmannii (Munz) Stan & Constance
Scutellaria bolanderi ssp. *austromontana* Epling
Senecio californicus DC.
Spirodela polyrrhiza (L.) Schlied.
Spirodela punctata C. Thompson
Sporobolus airoides Torrey
Streptanthella longirostris Rydb.
Thelypteris puberula var. *sonorensis* A.R. Smith
Thermopsis macrophylla Hook. & Arn. var. *macrophylla*
Trichostema parishii Vasey
Triteleia dudleyi Hoover
Triteleia hyacinthina (Lindley) E. Greene
Triteleia ixioides ssp. *scabra* (E. Greene) L. Lenz
Triteleia laxa Benth
Utricularia vulgaris L.
Vaccinium ovatum Pursh
Viola sheltonii Torrey
Wolffia borealis Landolt & O. Wildi
Wolffia columbiana Karsten
Wolffia globosa Hartog & Plas
Wolffiella lingulata Hegelm.
Wolffiella oblonga (Phil.) Hegelm.
Wyethia ovata T. & G.
Yucca brevifolia var. *herbertii* (J.M. Webber) Munz

Common Name

Panicgrass Φ
Grass-of-Parnassus Φ
Royal Penstemon Φ
Sticky Royal Penstemon Φ
Congdon Phacelia Φ
Incense-cedar Mistletoe Φ
Ground-cherry Φ
California Popcornflower Φ
Small-flowered Pink Plectritis Φ
Sacramento Mesamint Φ
Stipuled Water-Smartweed Φ
Douglas Knotweed Φ
Brewer Oregon Oak Φ
Slender White Water Crowfoot Φ
Sticky Blackcap Raspberry Φ
Thimbleberry Φ
Hooded Arrowhead Φ
Broadleaf Arrowhead Φ
Sitka Willow Φ
Hoffmann's Sanicle Φ
Southern Skullcap Φ
California Ragwort
Duckmeat Φ
Duckmeat Φ
Alkali Sacaton Φ
Dwarf Jewelflower Φ
Sonoran Maiden Fern Φ
False-Lupine Φ
Parish Bluecurls Φ
Dudley Triteleia Φ
White Triteleia Φ
Golden Brodiaea Φ
Ithuriel Spear Φ
Bladderwort Φ
California Huckleberry Φ
Shelton Violet Φ
Water-meal Φ
Coastal Water-meal Φ
Globe Water-meal Φ
Mud-midget Φ
Oblong Water-meal Φ
Mule-ears Φ
Herbert Joshua Tree Φ

Plants Recently Removed from List

Below is a list of taxa that were previously included on this list, but removed after the eleventh (presumed) extant population was found (through either direct field surveys or searches of herbaria records), or there was a taxonomic change that warranted deletion of the taxon from this list. This does not include plants listed by CNPS (2016) as rare throughout California (ranks 1 through 4). Only those taxa removed from the current edition are listed below. Consult earlier editions of this checklist for taxa removed from earlier editions.

Scientific Name

Encelia actoni Elmer
Eriodictyon crassifolium Benth
Holodiscus discolor (Pursh) Maxim. var. *discolor*

Common Name

Acton Brittlebush (U)
Thickleaf Yerba Santa (U)
Oceanspray, Cream Bush (U)

Scientific Name

Johnstonella micromeres (A. Gray) Hasenstab & M.G. Simpson
Juncus rugulosus Engelm.
Leptosiphon liniflorus (Benth.) J.M. Porter & L.A. Johnson
Lewisia rediviva ssp. *minor* (Rydb.) Munz
Lithophragma cymbalaria T. & G.
Lomatium mohavense (Coult. & Rose) Coult. & Rose ssp. *mohavense*
Lupinus arboreus Sims var. *arboreus*
Lupinus excubitus var. *austromontanus* (A.A. Heller) C.P. Smith
Lupinus latifolius J. Agardh var. *latifolius*
Lupinus latifolius var. *parishii* C.P. Smith
Lupinus lepidus var. *confertus* (Kellogg) C.P. Smith
Lupinus microcarpus var. *densiflorus* (Benth) Jeps.
Lupinus microcarpus var. *horizontalis* (A.A. Heller) Jeps.
Lupinus nanus Benth.
Madia exigua (Smith) A. Gray
Mentzelia micrantha (Hook. & Arnott) T. & G.
Mimulus constrictus (A.L. Grant) Pennell
Mimulus floribundus Lindley
Monardella undulata Benth. ssp. *undulata*
Ranunculus californicus Bentham var. *californicus*
Ranunculus hebecarpus Hooker & Arnott
Ribes californicum Hooker & Arnott var. *californicum*
Rumex maritimus L.
Scutellaria siphocampyloides Vatke
Scutellaria tuberosa Benth.
Trifolium variegatum Nutt. var. *variegatum*
Viola purpurea ssp. *quercetorum* (M. Baker & J. Clausen) R.J. Little

Common Name

Minute-flowered Forget (U)
Wrinkled Rush (U)
Narrow Flaxflower (U)
Small Bitterroot (U)
Mission Star (U)
Desert-parsley (U)
Yellow Bush Lupine (U)
Southern Mountain Bush Lupine (U)
Broad-leaved Lupine (R)
Parish Broad-leaved Lupine (U)
Prairie Lupine (U)
Densely Red-flowered Lupine (R)
Prostrate Red-flowered Lupine (U, Type)
Small Lupine (U)
Small or Threadstem Tarplant or Madia (R)
Tiny-flowered Stickleaf (U)
Narrow-throated Monkeyflower (U)
Floriferous Monkeyflower (U)
Curly-leaved Horsemint (R)
California Buttercup (U)
Hebe-fruited Buttercup (R)
Hillside Gooseberry (U)
Golden Dock (R)
Skullcap (U)
Danny Skullcap (U)
Whitewitch Clover (R)
Oak Violet (U)